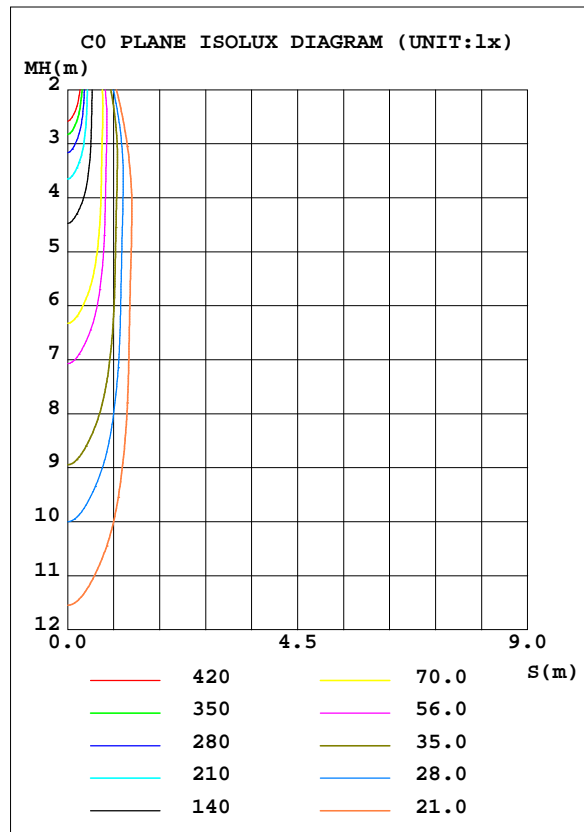
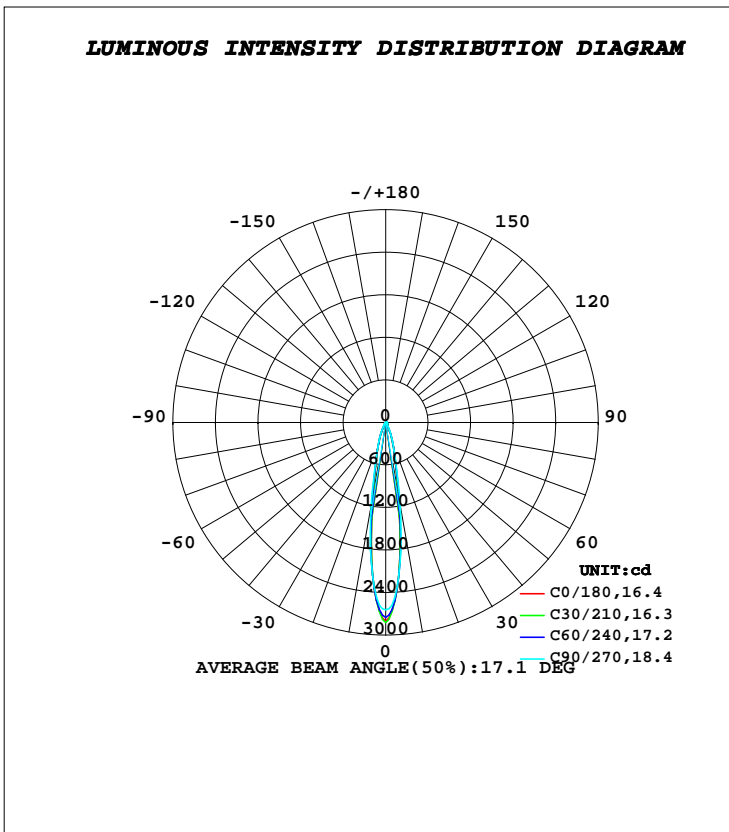


LUMINAIRE PHOTOMETRIC TEST REPORT

Test:U:220.80V I:0.0460A P:7.7900W PF:0.7580 Freq:50.00Hz		
Lamp Flux:454.483x1 lm		
Name: NS14	Type: LED	
MFR.:	DIM.: φ90mm	
	SUR.: φ45mm	

DATA OF LAMP		PHOTOMETRIC DATA Eff: 58.34 lm/W			
MODEL		I _{max} (cd)	2824	S/MH(C0/180)	0.28
NOMINAL POWER(W)	6	LOR(%)	100.0	S/MH(C90/270)	0.32
RATED VOLTAGE(V)	220	TOTAL FLUX(lm)	454.48	η UP, DN(C0-180)	1.5, 48.5
NOMINAL FLUX(lm)	454.483	CIE CLASS	DIRECT	η UP, DN(C180-360)	1.5, 48.5
LAMPS INSIDE	1	η up(%)	2.9	CIBSE SHR NOM	0.00
TEST VOLTAGE(V)	220	η down(%)	97.1	CIBSE SHR MAX	0.30



C Range: 0 - 360DEG
C Interval: 30.0DEG
Test Speed: HIGH
Temperature:25.3DEG
Operators:DAMIN
Test Date:2022-07-05

γ Range: 0 - 180DEG
γ Interval: 1.0DEG
Test System:EVERFINE GO-2000A_V1 SYSTEM V2.00.443
Humidity:65.0%
Test Distance:8.000m [K=0.7063]
Remarks:

ZONAL FLUX DIAGRAM

ZONAL FLUX DIAGRAM:

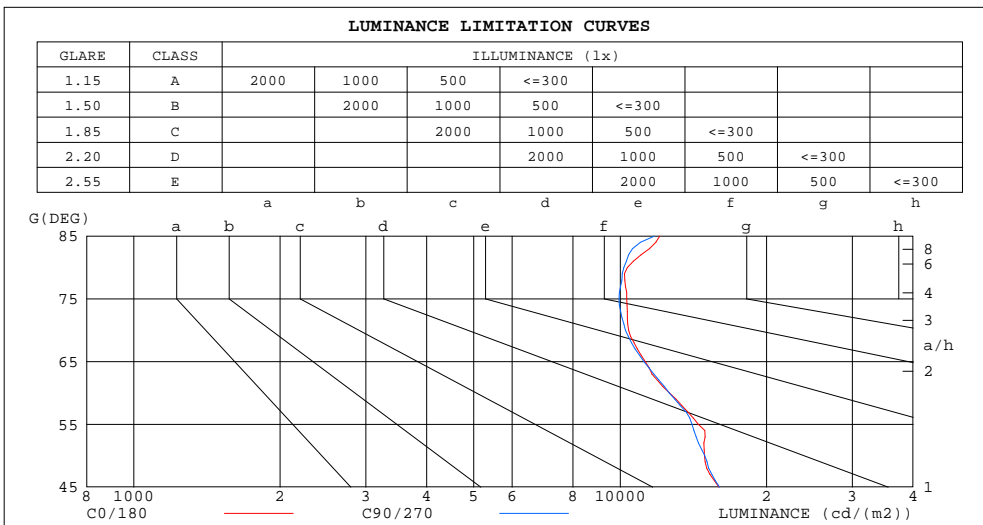
γ	C0	C45	C90	C135	C180	C225	C270	C315	γ	Φ zone	Φ total	%lum,lamp
10	1018	1054	1170	1054	1018	1054	1170	1054	0- 10	169.0	169.0	37.2,37.2
20	276.3	275.2	285.8	275.2	276.3	275.2	285.8	275.2	10- 20	148.6	317.6	69.9,69.9
30	50.48	54.81	64.50	54.81	50.48	54.81	64.50	54.81	20- 30	63.36	381.0	83.8,83.8
40	22.51	22.47	22.94	22.47	22.51	22.47	22.94	22.47	30- 40	20.90	401.9	88.4,88.4
50	15.32	15.14	15.37	15.14	15.32	15.14	15.37	15.14	40- 50	14.06	416.0	91.5,91.5
60	10.10	9.979	10.10	9.979	10.10	9.979	10.10	9.979	50- 60	11.50	427.5	94.1,94.1
70	5.699	5.594	5.611	5.594	5.699	5.594	5.611	5.594	60- 70	7.525	435.0	95.7,95.7
80	2.876	2.832	2.826	2.832	2.876	2.832	2.826	2.832	70- 80	4.415	439.4	96.7,96.7
90	0.4579	0.6277	0.7784	0.6277	0.4579	0.6277	0.7784	0.6277	80- 90	1.814	441.2	97.1,97.1
100	0.5169	0.5344	0.5324	0.5344	0.5169	0.5344	0.5324	0.5344	90-100	0.5379	441.8	97.2,97.2
110	0.8026	0.8231	0.8312	0.8231	0.8026	0.8231	0.8312	0.8231	100-110	0.6862	442.4	97.4,97.4
120	1.418	1.385	1.359	1.385	1.418	1.385	1.359	1.385	110-120	1.076	443.5	97.6,97.6
130	1.974	2.041	2.096	2.041	1.974	2.041	2.096	2.041	120-130	1.524	445.0	97.9,97.9
140	3.228	3.186	3.141	3.186	3.228	3.186	3.141	3.186	130-140	1.959	447.0	98.4,98.4
150	4.784	4.700	4.543	4.700	4.784	4.700	4.543	4.700	140-150	2.451	449.5	98.9,98.9
160	6.412	6.216	5.977	6.216	6.412	6.216	5.977	6.216	150-160	2.503	452.0	99.4,99.4
170	7.241	6.947	6.684	6.947	7.241	6.947	6.684	6.947	160-170	1.890	453.9	99.9,99.9
180	6.122	5.947	5.928	5.947	6.122	5.947	5.928	5.947	170-180	0.6326	454.5	100,100
DEG	LUMINOUS INTENSITY:cd									UNIT:lm		

C Range: 0 - 360DEG
C Interval: 30.0DEG
Test Speed: HIGH
Temperature:25.3DEG
Operators:DAMIN
Test Date:2022-07-05

γ Range: 0 - 180DEG
 γ Interval: 1.0DEG
Test System:EVERFINE GO-2000A_V1 SYSTEM V2.00.443
Humidity:65.0%
Test Distance:8.000m [K=0.7063]
Remarks:

LUMINANCE LIMITATION CURVES

Test:U:220.80V I:0.0460A P:7.7900W PF:0.7580 Freq:50.00Hz		
Lamp Flux:454.483x1 lm		
Name: NS14	Type: LED	
MFR.:	DIM.: φ90mm	
	SUR.: φ45mm	



LUMINANCE cd/(m2)		
G(DEG)	C0/180	C90/270
85	12061	11745
80	10353	10172
75	10310	9947
70	10415	10253
65	11271	11201
60	12631	12627
55	14475	14051
50	14899	14940
45	15970	16000

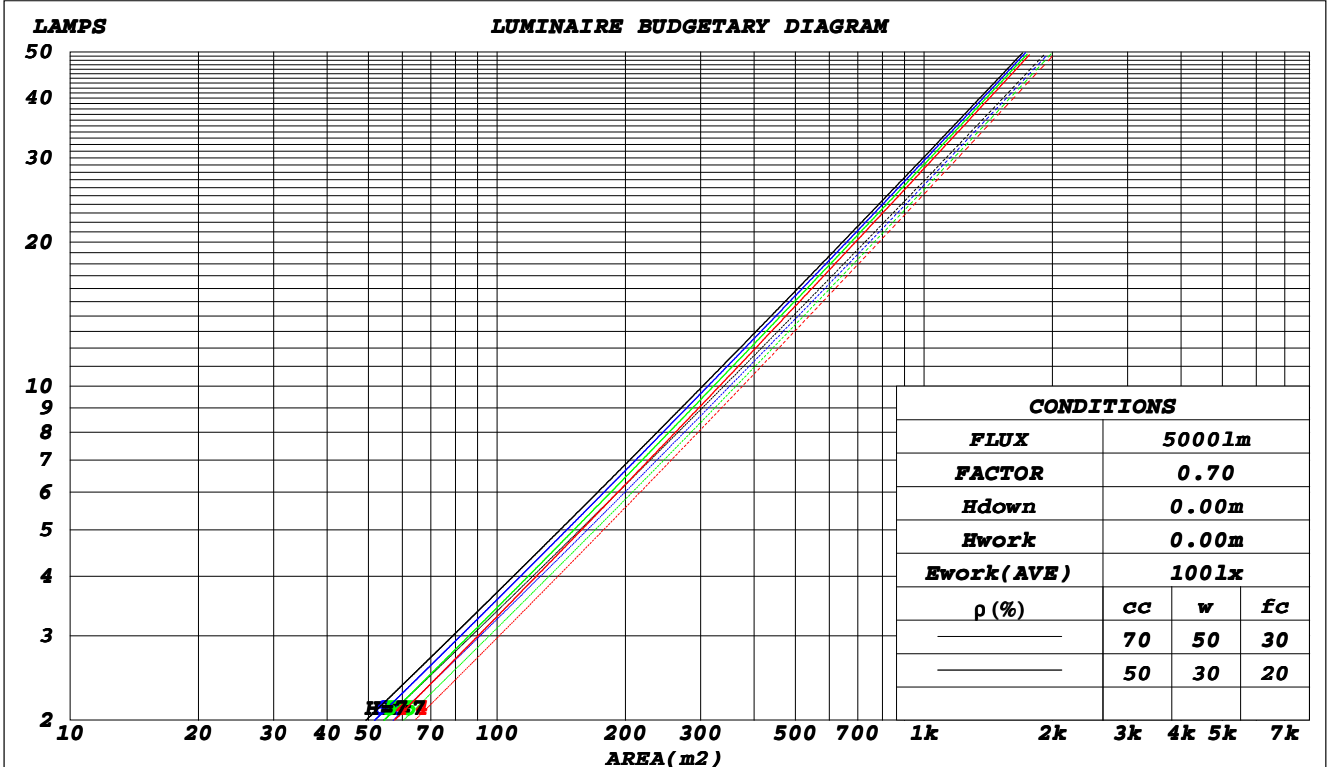
C Range: 0 - 360DEG
C Interval: 30.0DEG
Test Speed: HIGH
Temperature: 25.3DEG
Operators: DAMIN
Test Date: 2022-07-05

γ Range: 0 - 180DEG
γ Interval: 1.0DEG
Test System: EVERFINE GO-2000A_V1 SYSTEM V2.00.443
Humidity: 65.0%
Test Distance: 8.000m [K=0.7063]
Remarks:

CU AND LUMINAIRE BUDGETARY ESTIMATE DIAGRAM

Test:U:220.80V I:0.0460A P:7.7900W PF:0.7580 Freq:50.00Hz		
Lamp Flux:454.483x1 lm		
Name: NS14	Type: LED	
MFR.:	DIM.: φ90mm	
	SUR.: φ45mm	

ρ _{cc}	80%			70%			50%			30%			10%			0
ρ _w	50%	30%	10%	50%	30%	10%	50%	30%	10%	50%	30%	10%	50%	30%	10%	0
ρ _{fc}	20%			20%			20%			20%			20%			0
RCR	RCR:Room Cavity Ratio						Coefficients of Utilization(CU)									
0.0	1.18	1.18	1.18	1.15	1.15	1.15	1.09	1.09	1.09	1.04	1.04	1.04	.99	.99	.99	.97
1.0	1.11	1.09	1.07	1.09	1.07	1.05	1.04	1.02	1.01	.00	.99	.98	.96	.95	.94	.92
2.0	1.05	1.01	.98	1.03	.00	.97	.99	.97	.94	.96	.94	.92	.93	.91	.90	.88
3.0	.99	.95	.92	.98	.94	.91	.95	.92	.89	.92	.90	.87	.90	.88	.86	.84
4.0	.95	.90	.87	.94	.89	.86	.91	.88	.85	.89	.86	.84	.87	.84	.82	.81
5.0	.91	.86	.83	.90	.85	.82	.88	.84	.81	.86	.83	.80	.84	.82	.79	.78
6.0	.87	.83	.79	.87	.82	.79	.85	.81	.78	.83	.80	.77	.82	.79	.77	.76
7.0	.84	.80	.76	.84	.79	.76	.82	.78	.75	.81	.77	.75	.80	.77	.74	.73
8.0	.82	.77	.74	.81	.77	.74	.80	.76	.73	.79	.75	.73	.77	.74	.72	.71
9.0	.79	.75	.71	.78	.74	.71	.77	.74	.71	.76	.73	.71	.76	.72	.70	.69
10.0	.77	.72	.69	.76	.72	.69	.75	.72	.69	.74	.71	.69	.74	.71	.68	.67



C Range: 0 - 360DEG
 C Interval: 30.0DEG
 Test Speed: HIGH
 Temperature:25.3DEG
 Operators:DAMIN
 Test Date:2022-07-05

γ Range: 0 - 180DEG
 γ Interval: 1.0DEG
 Test System:EVERFINE GO-2000A_V1 SYSTEM V2.00.443
 Humidity:65.0%
 Test Distance:8.000m [K=0.7063]
 Remarks:

WEC AND CCEC

Test:U:220.80V I:0.0460A P:7.7900W PF:0.7580 Freq:50.00Hz		
Lamp Flux:454.483x1 lm		
Name: NS14	Type: LED	
MFR.:	DIM.: φ90mm	
	SUR.: φ45mm	

ρ _{cc}	80%			70%			50%			30%			10%			0
ρ _w	50%	30%	10%	50%	30%	10%	50%	30%	10%	50%	30%	10%	50%	30%	10%	0
ρ _{fc}	20%			20%			20%			20%			20%			0
RCR	RCR:Room Cavity Ratio						Wall Exitance Coefficients(WEC)									
0.0																
1.0	.160	.091	.029	.153	.087	.028	.138	.079	.025	.125	.072	.023	.113	.066	.021	
2.0	.148	.081	.025	.142	.078	.024	.130	.072	.022	.119	.067	.021	.109	.061	.019	
3.0	.137	.073	.022	.132	.071	.021	.121	.066	.020	.112	.061	.019	.103	.057	.018	
4.0	.127	.066	.019	.123	.064	.019	.114	.060	.018	.106	.057	.017	.098	.053	.016	
5.0	.119	.061	.018	.115	.059	.017	.107	.056	.016	.100	.053	.016	.094	.050	.015	
6.0	.112	.056	.016	.108	.055	.016	.102	.052	.015	.095	.050	.015	.090	.047	.014	
7.0	.105	.052	.015	.102	.051	.015	.096	.049	.014	.091	.047	.014	.086	.045	.013	
8.0	.100	.049	.014	.097	.048	.013	.092	.046	.013	.087	.044	.013	.082	.042	.012	
9.0	.095	.046	.013	.092	.045	.013	.087	.043	.012	.083	.042	.012	.079	.040	.012	
10.0	.090	.043	.012	.088	.042	.012	.084	.041	.012	.080	.039	.011	.076	.038	.011	

ρ _{cc}	80%			70%			50%			30%			10%			0
ρ _w	50%	30%	10%	50%	30%	10%	50%	30%	10%	50%	30%	10%	50%	30%	10%	0
ρ _{fc}	20%			20%			20%			20%			20%			0
RCR	RCR:Room Cavity Ratio						Ceiling Cavity Exitance Coefficients(CCEC)									
0.0	.213	.213	.213	.182	.182	.182	.124	.124	.124	.071	.071	.071	.023	.023	.023	
1.0	.192	.180	.169	.165	.154	.145	.113	.106	.100	.065	.061	.058	.021	.020	.019	
2.0	.176	.155	.138	.150	.134	.119	.103	.092	.083	.059	.054	.049	.019	.017	.016	
3.0	.162	.136	.116	.139	.117	.100	.095	.082	.070	.055	.048	.042	.018	.015	.014	
4.0	.150	.121	.099	.128	.105	.086	.088	.073	.061	.051	.043	.036	.016	.014	.012	
5.0	.139	.109	.087	.120	.094	.075	.082	.066	.053	.048	.039	.032	.015	.013	.010	
6.0	.131	.099	.077	.112	.086	.067	.077	.060	.047	.045	.035	.028	.015	.012	.009	
7.0	.123	.091	.069	.106	.079	.060	.073	.055	.043	.043	.033	.025	.014	.011	.008	
8.0	.117	.085	.063	.100	.073	.055	.069	.052	.039	.040	.030	.023	.013	.010	.008	
9.0	.111	.079	.058	.095	.069	.050	.066	.048	.036	.038	.028	.021	.012	.009	.007	
10.0	.106	.074	.054	.091	.065	.047	.063	.045	.033	.037	.027	.020	.012	.009	.007	

C Range: 0 - 360DEG
C Interval: 30.0DEG
Test Speed: HIGH
Temperature:25.3DEG
Operators:DAMIN
Test Date:2022-07-05

γ Range: 0 - 180DEG
γ Interval: 1.0DEG
Test System:EVERFINE GO-2000A_V1 SYSTEM V2.00.443
Humidity:65.0%
Test Distance:8.000m [K=0.7063]
Remarks:

UGR(Unified Glare Rating) Table

Test:U:220.80V I:0.0460A P:7.7900W PF:0.7580 Freq:50.00Hz		
Lamp Flux:454.483x1 lm		
Name: NS14	Type: LED	
MFR.:	DIM.: φ90mm	
	SUR.: φ45mm	

ceiling/cavity	0.7	0.7	0.5	0.5	0.3	0.7	0.7	0.5	0.5	0.3
walls	0.5	0.3	0.5	0.3	0.3	0.5	0.3	0.5	0.3	0.3
working plane	0.2	0.2	0.2	0.2	0.2	0.2	0.2	0.2	0.2	0.2
Room dimensions	Viewed crosswise					Viewed endwise				
x = 2H y = 2H	15.8	16.5	16.0	16.7	16.9	15.8	16.6	16.1	16.8	17.0
3H	16.9	17.6	17.2	17.8	18.1	16.9	17.6	17.2	17.8	18.1
4H	17.4	18.1	17.7	18.3	18.6	17.4	18.1	17.7	18.3	18.6
6H	17.9	18.5	18.2	18.8	19.1	17.9	18.5	18.2	18.8	19.0
8H	18.1	18.7	18.5	19.0	19.3	18.1	18.6	18.4	18.9	19.2
12H	18.3	18.9	18.7	19.2	19.5	18.2	18.8	18.6	19.1	19.4
4H 2H	16.3	16.9	16.6	17.2	17.4	16.3	16.9	16.6	17.2	17.5
3H	17.6	18.1	17.9	18.4	18.8	17.6	18.1	17.9	18.4	18.8
4H	18.2	18.7	18.6	19.1	19.4	18.2	18.7	18.6	19.0	19.4
6H	18.8	19.3	19.2	19.7	20.1	18.8	19.2	19.2	19.6	20.0
8H	19.1	19.5	19.5	19.9	20.3	19.0	19.5	19.5	19.9	20.3
12H	19.3	19.7	19.8	20.2	20.6	19.3	19.7	19.7	20.1	20.5
8H 4H	18.4	18.9	18.9	19.3	19.7	18.4	18.8	18.8	19.2	19.7
6H	19.2	19.5	19.7	20.0	20.5	19.1	19.5	19.6	19.9	20.4
8H	19.6	19.9	20.1	20.4	20.9	19.5	19.8	20.0	20.3	20.8
12H	20.0	20.2	20.5	20.7	21.2	19.8	20.1	20.4	20.6	21.1
12H 4H	18.4	18.8	18.9	19.3	19.7	18.4	18.8	18.9	19.2	19.7
6H	19.2	19.6	19.7	20.0	20.5	19.2	19.5	19.7	20.0	20.5
8H	19.7	20.0	20.2	20.5	21.0	19.6	19.9	20.1	20.4	20.9
Variations with the observer position at spacings(CIE Pub.117):										
S = 1.0H	+ 0.2 / - 0.3					+ 0.2 / - 0.3				
1.5H	+ 0.2 / - 0.2					+ 0.2 / - 0.2				
2.0H	+ 0.3 / - 0.3					+ 0.3 / - 0.3				

CIE Pub.117, 454.5 lm Total Lamp Luminous Flux Corrected (8log(F/F0) = -2.7)
 Area: 0.0016 m2

C Range: 0 - 360DEG
C Interval: 30.0DEG
Test Speed: HIGH
Temperature:25.3DEG
Operators:DAMIN
Test Date:2022-07-05

γ Range: 0 - 180DEG
γ Interval: 1.0DEG
Test System:EVERFINE GO-2000A_V1 SYSTEM V2.00.443
Humidity:65.0%
Test Distance:8.000m [K=0.7063]
Remarks:

UTILIZATION FACTORS TABLE

Test:U:220.80V I:0.0460A P:7.7900W PF:0.7580 Freq:50.00Hz Lamp Flux:454.483x1 lm		
Name: NS14	Type: LED	
MFR.:	DIM.: φ90mm	
	SUR.: φ45mm	

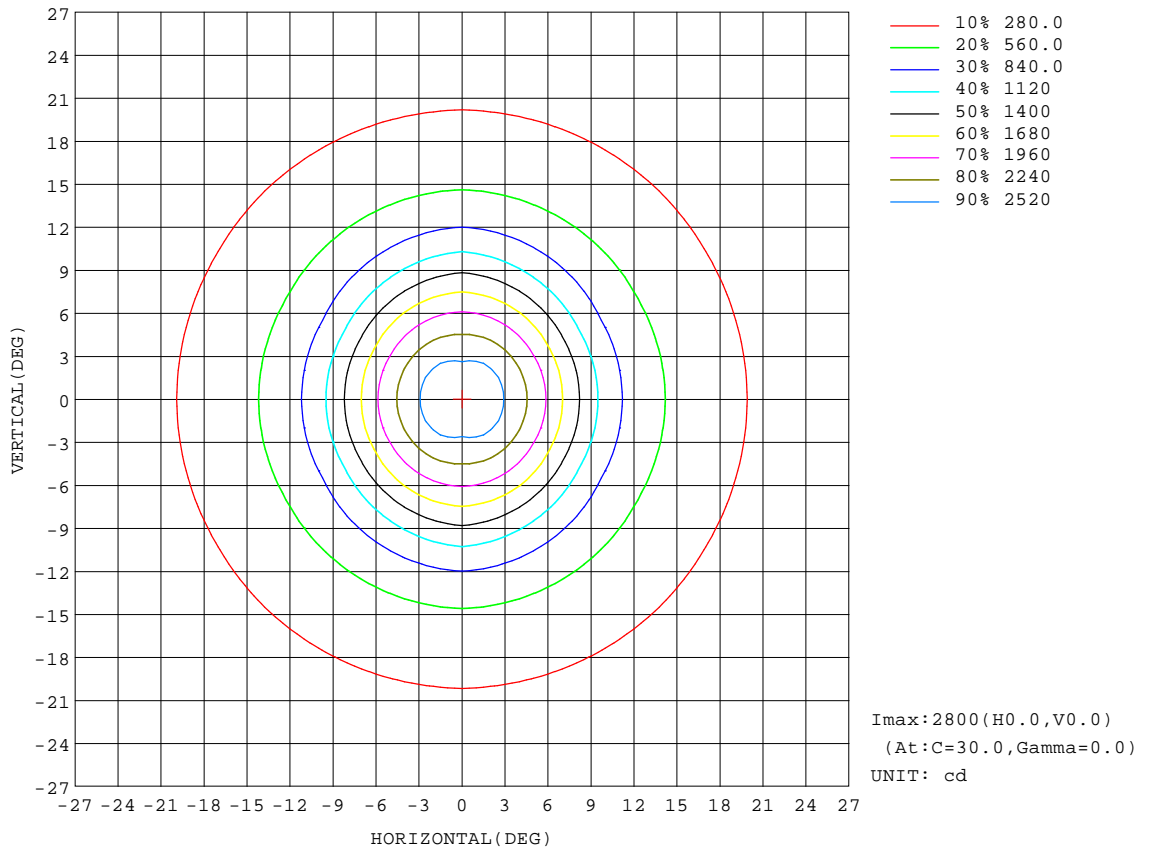
REFLECTANCE										
Ceiling	0.8	0.8	0.8	0.7	0.7	0.7	0.5	0.5	0.5	0
Walls	0.7	0.5	0.3	0.7	0.5	0.3	0.7	0.5	0.3	0
Working plane	0.2	0.2	0.2	0.2	0.2	0.2	0.2	0.2	0.2	0
ROOM INDEX	UTILIZATION FACTORS(PERCENT) $k(RI) \times RCR = 5$									
k = 0.60	84	78	74	84	78	74	83	77	73	70
0.80	92	86	82	91	85	81	90	84	81	77
1.00	96	90	86	95	90	86	93	89	85	81
1.25	101	95	91	99	94	91	97	93	90	85
1.50	103	98	95	102	97	94	99	95	93	87
2.00	106	102	98	105	101	97	102	98	95	89
2.50	108	104	101	106	103	100	103	100	97	91
3.00	110	106	103	108	105	102	104	101	99	92
4.00	112	109	107	110	107	105	106	104	102	94
5.00	114	111	109	111	109	107	107	105	104	95
ROOM INDEX	UF(total)									Direct
According to DIN EN 13032-2 2004			Suspended					SHRNOM = 1.25		

C Range: 0 - 360DEG
C Interval: 30.0DEG
Test Speed: HIGH
Temperature:25.3DEG
Operators:DAMIN
Test Date:2022-07-05

γ Range: 0 - 180DEG
γ Interval: 1.0DEG
Test System:EVERFINE GO-2000A_V1 SYSTEM V2.00.443
Humidity:65.0%
Test Distance:8.000m [K=0.7063]
Remarks:

ISOCANDELA DIAGRAM

Test:U:220.80V I:0.0460A P:7.7900W PF:0.7580 Freq:50.00Hz		
Lamp Flux:454.483x1 lm		
Name: NS14	Type: LED	
MFR.:	DIM.: φ90mm	
	SUR.: φ45mm	



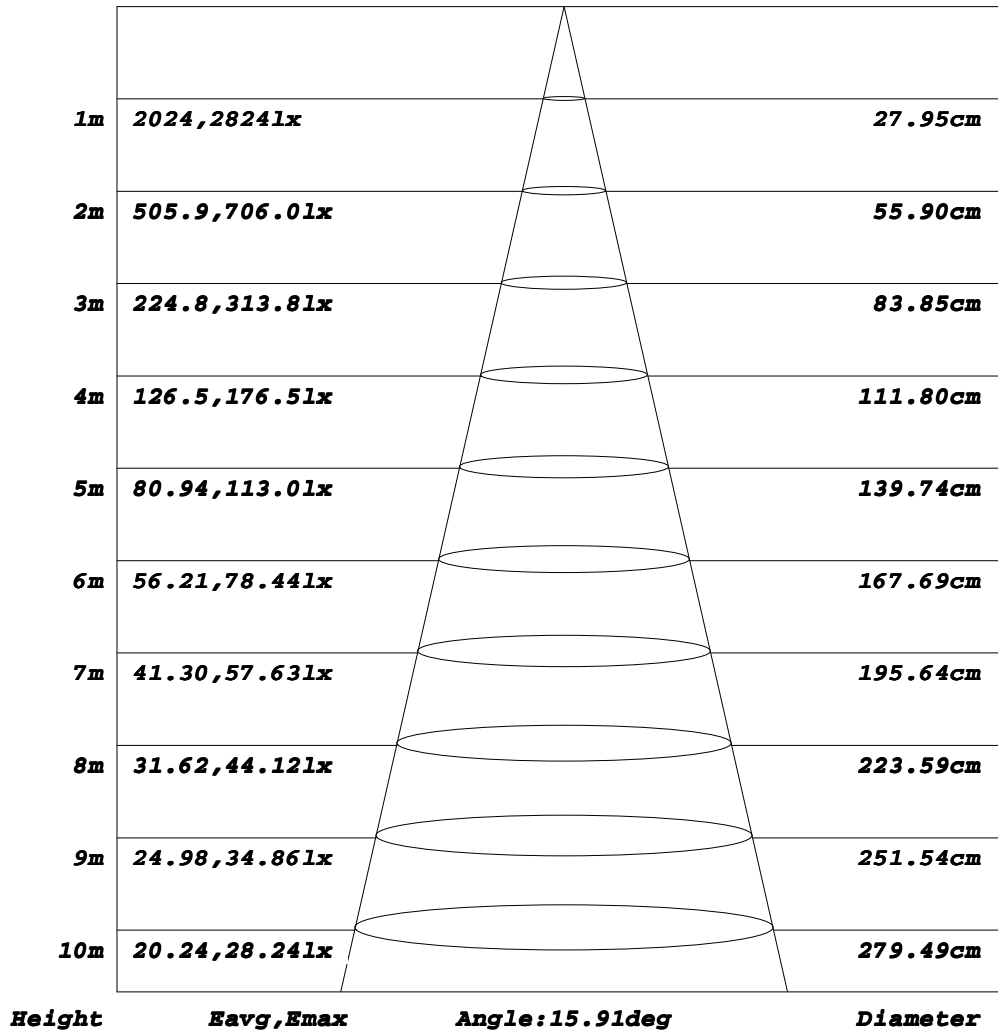
C Range: 0 - 360DEG
C Interval: 30.0DEG
Test Speed: HIGH
Temperature: 25.3DEG
Operators: DAMIN
Test Date: 2022-07-05

γ Range: 0 - 180DEG
γ Interval: 1.0DEG
Test System: EVERFINE GO-2000A_V1 SYSTEM V2.00.443
Humidity: 65.0%
Test Distance: 8.000m [K=0.7063]
Remarks:

AAI Figure

Test:U:220.80V I:0.0460A P:7.7900W PF:0.7580 Freq:50.00Hz		
Lamp Flux:454.483x1 lm		
Name: NS14	Type: LED	
MFR.:	DIM.: φ90mm	
	SUR.: φ45mm	

Flux out:125.6 lm



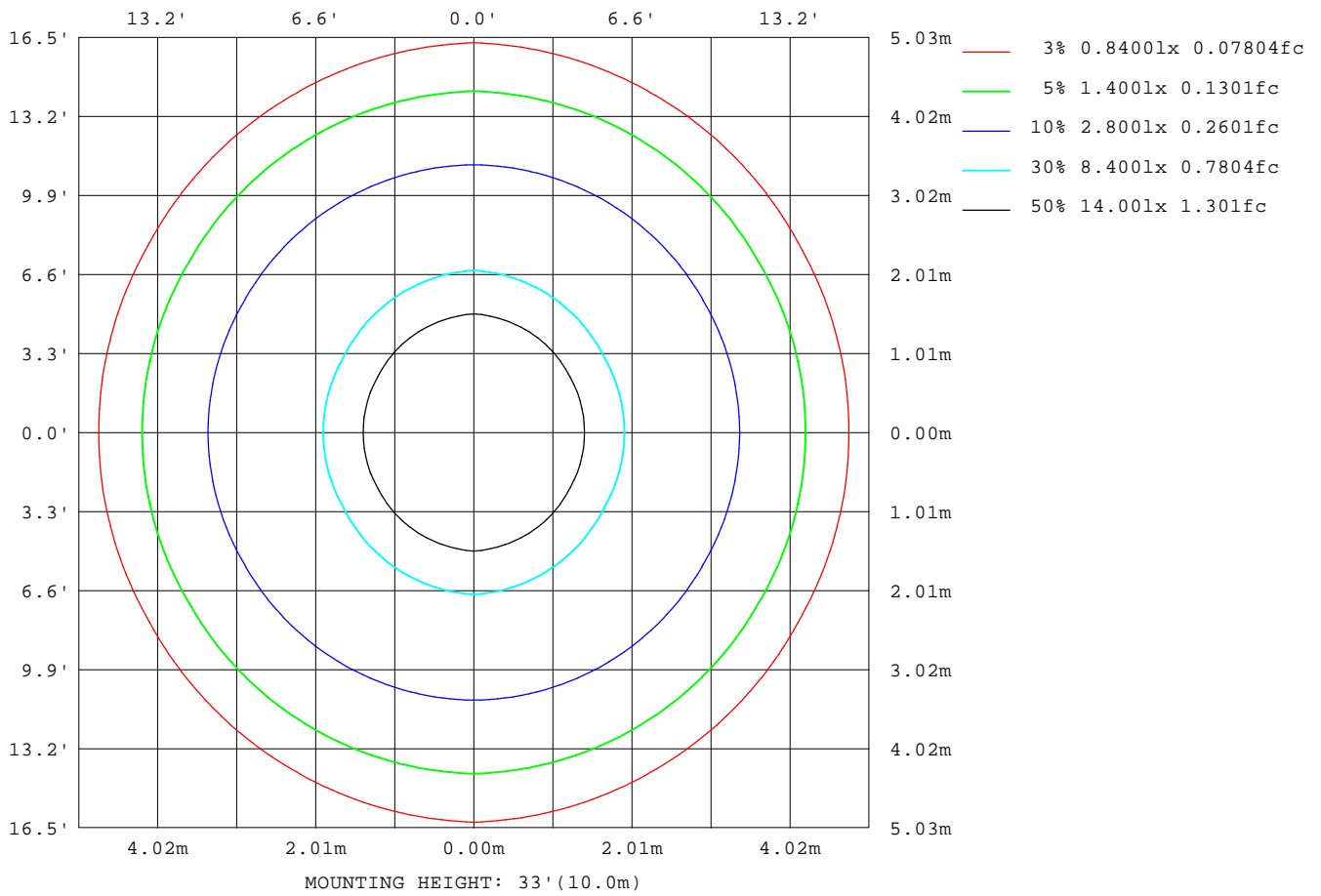
Note: The Curves indicate the illuminated area and the average illumination when the luminaire is at different distance.

C Range: 0 - 360DEG
C Interval: 30.0DEG
Test Speed: HIGH
Temperature: 25.3DEG
Operators: DAMIN
Test Date: 2022-07-05

γ Range: 0 - 180DEG
γ Interval: 1.0DEG
Test System: EVERFINE GO-2000A_V1 SYSTEM V2.00.443
Humidity: 65.0%
Test Distance: 8.000m [K=0.7063]
Remarks:

ISOLUX DIAGRAM

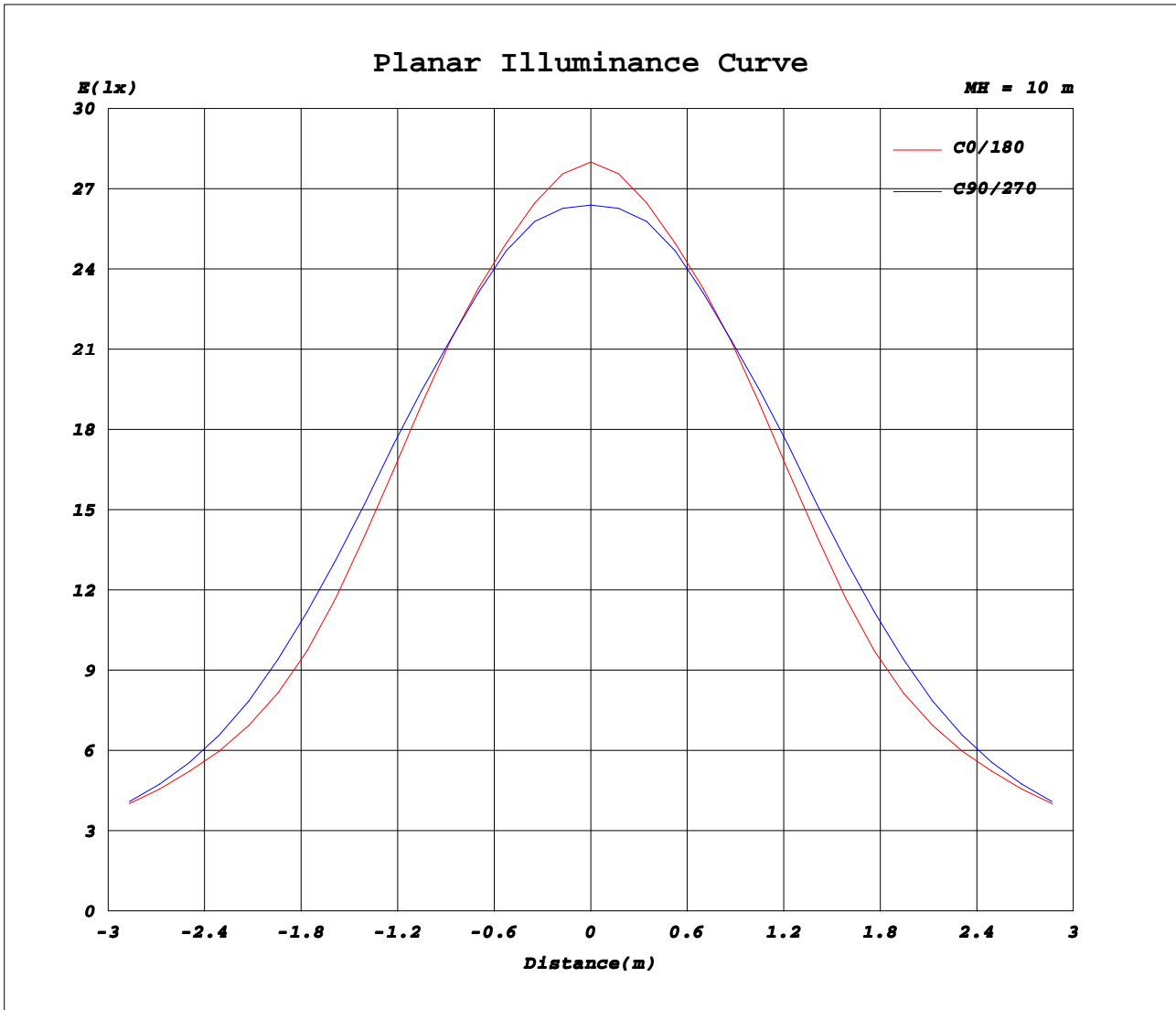
Test:U:220.80V I:0.0460A P:7.7900W PF:0.7580 Freq:50.00Hz		
Lamp Flux:454.483x1 lm		
Name: NS14	Type: LED	
MFR.:	DIM.: ϕ 90mm	
	SUR.: ϕ 45mm	



C Range: 0 - 360DEG
C Interval: 30.0DEG
Test Speed: HIGH
Temperature: 25.3DEG
Operators: DAMIN
Test Date: 2022-07-05

γ Range: 0 - 180DEG
 γ Interval: 1.0DEG
Test System: EVERFINE GO-2000A_V1 SYSTEM V2.00.443
Humidity: 65.0%
Test Distance: 8.000m [K=0.7063]
Remarks:

Planar Illuminance Curve



C Range: 0 - 360DEG
C Interval: 30.0DEG
Test Speed: HIGH
Temperature: 25.3DEG
Operators: DAMIN
Test Date: 2022-07-05

γ Range: 0 - 180DEG
γ Interval: 1.0DEG
Test System: EVERFINE GO-2000A_V1 SYSTEM V2.00.443
Humidity: 65.0%
Test Distance: 8.000m [K=0.7063]
Remarks:

LUMINOUS DISTRIBUTION INTENSITY DATA

Test:U:220.80V I:0.0460A P:7.7900W PF:0.7580 Freq:50.00Hz		
Lamp Flux:454.483x1 lm		
Name: NS14	Type: LED	
MFR.:	DIM.: φ90mm	
	SUR.: φ45mm	

Table--1

UNIT: cd

C(DEG) γ (DEG)	0	30	60	90	120	150	180	210	240	270	300	330							
0	2800	2824	2749	2639	2749	2824	2800	2824	2749	2639	2749	2824							
5	2154	2151	2160	2158	2160	2151	2154	2151	2160	2158	2160	2151							
10	1018	1016	1091	1170	1091	1016	1018	1016	1091	1170	1091	1016							
15	507	497	511	528	511	497	507	497	511	528	511	497							
20	276	272	278	286	278	272	276	272	278	286	278	272							
25	125	125	134	144	134	125	125	125	134	144	134	125							
30	50.5	51.6	58.0	64.5	58.0	51.6	50.5	51.6	58.0	64.5	58.0	51.6							
35	33.0	31.3	31.2	32.6	31.2	31.3	33.0	31.3	31.2	32.6	31.2	31.3							
40	22.5	22.4	22.6	22.9	22.6	22.4	22.5	22.4	22.6	22.9	22.6	22.4							
45	18.1	17.8	17.9	18.1	17.9	17.8	18.1	17.8	17.9	18.1	17.9	17.8							
50	15.3	15.1	15.2	15.4	15.2	15.1	15.3	15.1	15.2	15.4	15.2	15.1							
55	13.3	13.1	13.0	12.9	13.0	13.1	13.3	13.1	13.0	12.9	13.0	13.1							
60	10.1	9.96	10.00	10.1	10.00	9.96	10.1	9.96	10.00	10.1	10.00	9.96							
65	7.62	7.46	7.47	7.57	7.47	7.46	7.62	7.46	7.47	7.57	7.47	7.46							
70	5.70	5.61	5.58	5.61	5.58	5.61	5.70	5.61	5.58	5.61	5.58	5.61							
75	4.27	4.19	4.13	4.12	4.13	4.19	4.27	4.19	4.13	4.12	4.13	4.19							
80	2.88	2.85	2.82	2.83	2.82	2.85	2.88	2.85	2.82	2.83	2.82	2.85							
85	1.68	1.66	1.63	1.64	1.63	1.66	1.68	1.66	1.63	1.64	1.63	1.66							
90	0.46	0.57	0.68	0.78	0.68	0.57	0.46	0.57	0.68	0.78	0.68	0.57							
95	0.46	0.48	0.46	0.46	0.46	0.48	0.46	0.48	0.46	0.46	0.46	0.48							
100	0.52	0.54	0.53	0.53	0.53	0.54	0.52	0.54	0.53	0.53	0.53	0.54							
105	0.63	0.65	0.63	0.64	0.63	0.65	0.63	0.65	0.63	0.64	0.63	0.65							
110	0.80	0.83	0.82	0.83	0.82	0.83	0.80	0.83	0.82	0.83	0.82	0.83							
115	1.07	1.09	1.07	1.09	1.07	1.09	1.07	1.09	1.07	1.09	1.07	1.09							
120	1.42	1.41	1.36	1.36	1.36	1.41	1.42	1.41	1.36	1.36	1.36	1.41							
125	1.71	1.72	1.69	1.69	1.69	1.72	1.71	1.72	1.69	1.69	1.69	1.72							
130	1.97	2.03	2.06	2.10	2.06	2.03	1.97	2.03	2.06	2.10	2.06	2.03							
135	2.47	2.50	2.52	2.54	2.52	2.50	2.47	2.50	2.52	2.54	2.52	2.50							
140	3.23	3.21	3.16	3.14	3.16	3.21	3.23	3.21	3.16	3.14	3.16	3.21							
145	4.00	3.98	3.90	3.84	3.90	3.98	4.00	3.98	3.90	3.84	3.90	3.98							
150	4.78	4.76	4.64	4.54	4.64	4.76	4.78	4.76	4.64	4.54	4.64	4.76							
155	5.60	5.55	5.40	5.26	5.40	5.55	5.60	5.55	5.40	5.26	5.40	5.55							
160	6.41	6.31	6.12	5.98	6.12	6.31	6.41	6.31	6.12	5.98	6.12	6.31							
165	6.99	6.88	6.67	6.52	6.67	6.88	6.99	6.88	6.67	6.52	6.67	6.88							
170	7.24	7.06	6.83	6.68	6.83	7.06	7.24	7.06	6.83	6.68	6.83	7.06							
175	6.69	6.50	6.32	6.23	6.32	6.50	6.69	6.50	6.32	6.23	6.32	6.50							
180	6.12	5.98	5.91	5.93	5.91	5.98	6.12	5.98	5.91	5.93	5.91	5.98							

C Range: 0 - 360DEG
C Interval: 30.0DEG
Test Speed: HIGH
Temperature:25.3DEG
Operators:DAMIN
Test Date:2022-07-05

γ Range: 0 - 180DEG
γ Interval: 1.0DEG
Test System:EVERFINE GO-2000A_V1 SYSTEM V2.00.443
Humidity:65.0%
Test Distance:8.000m [K=0.7063]
Remarks: