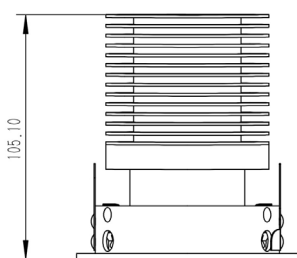
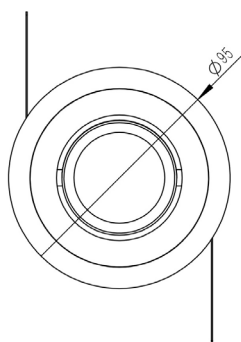


Datasheet

Type: NS26
Itemnr.: 2600510930001



Technical Data

Lumen	2000lm or 3000lm ± 5 %
Beam Angle	15, 24 or 36
Colors Available	Warm white, Neutral white
Color Temperature	2700K, 3000K, 4000K
Color Rendering	CRI90 (Option CRI97)
MacAdam	Step 3 (Option Step 2)
Consumption	20W or 30W
Voltage Range	220 ~ 240VAC 50/60Hz external driver
Current LEDs	350mA
PF Power Factor	>95 @ Full load
Flicker	<1 % Flicker free (IEEE Std. 1789-2015)
10A Fuse Type C	Max. 24 luminaires (Start Current limit)
Leakage current	< 0,5mA @ 240V AC (custom possible)
Efficiency	100 lm/W (LEDs 150 lm/W) - Custom possible
Equal To	NS26 20W = Metal haide 35W HIT
Lifetime TM-21	50K hours at Ta = 25°C (L90) B50
Lifetime LEDs	80K hours at Ta = 25°C (L80) B50
Lifetime driver	100K hours at Ta = 25°C (MTBF) B50
Driver Options	DALI, 1-10V, Push dim, CLO
IP Code	IP44 (Above IP20)
IK Class	IK05
Class	2, Double Insulated
Working temp	-20 to 45 degree Celsius
Size	Ø95 x H105 mm (30W H115mm)
Hole size	Ø85mm
Installation	Recessed, one driver for each luminaire
Typical UGR	<20
Linkable cables	Yes 5 pol terminal box for two cables
Material used	Die cast aluminum, PMMA for frontglass
Weight	0,5 Kg
Shipping	Package of 25 pcs
IES File	Yes
Certificates	CE, ROHS, TM21, LM80, IES
Other	ENEC, only for driver unit
Warranty	5 years*
Housing	White, silver, black or optional RAL colors
Included	Complete lamp housing, LEDs, driver

Lumega Europe ApS
Phone +4571995825
info@lumega.eu
www.lumega.eu

