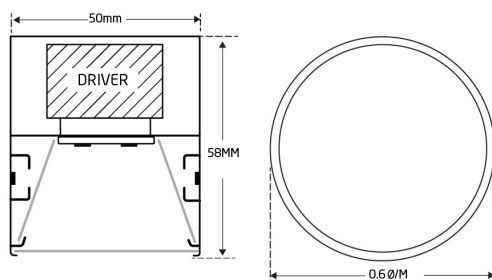


# Datasheet

Type: NS41  
Itemnr.: 4100160930001



## Technical Data

Lumen	2.940lm - 14.910lm $\pm$ 5 %
Beam Angle	150 (opal or microprismatic frontglass)
Colors Available	Warm white, Neutral white, Cold white
Color Temperature	3000K, 4000K, 5000K (opt. tunable white)
Color Rendering	CRI80 (Option CRI90)
MacAdam	Step 3
Consumption	28W, 47W, 56W, 70W, 94W, 113W, 142W
Voltage Range	200 ~ 240VAC 50/60Hz internal driver
Current LEDs	500mA or 700mA
PF & Flicker	Power Factor >97 & Flicker <1 % (Custom)
10A Fuse Type C	Max. 8 luminaires (Start Current limit)
Flicker	<1 % Flicker free (IEEE Std. 1789-2015)
Leakage current	< 0,5mA @ 240V AC (custom possible)
Efficiency	105 lm/W (LEDs 165 lm/W) - Custom possible
Equal To	NS41 70W = Fluorescent tube T5 2x54W
Lifetime TM-21	60K hours at Ta = 25°C (L90) B10
Lifetime LEDs	100K hours at Ta = 25°C (L80) B50
Lifetime driver	100K hours at Ta = 25°C (MTBF) B50
Driver Options	DALI, DALI V2 DT8, 1-10V, CLO
IP Code	IP20
IK Class	IK05
Class	2, Double Insulated
Working temp	-20 to 55 degree Celsius
Size	50x58x Ø600, 1000, 1500, 2000, 3000mm
Hole size	N/A
Installation	Surface or pendant mounted (driver internal)
Typical UGR	<19
Linkable cables	No, only entry for one cable
Material used	Die cast aluminum, PMMA for frontglass
Weight	4 - 12 Kg
Shipping	Package of 1 pc
IES File	Yes
Certificates	CE, ROHS, TM21, LM80, IES
Other	ENEC, only for driver unit
Warranty	5 years*
Housing	White, silver, black, wood or optional RAL
Included	Complete lamp housing, LEDs, driver

Lumega Europe ApS  
Phone +4571995825  
info@lumega.eu  
www.lumega.eu

