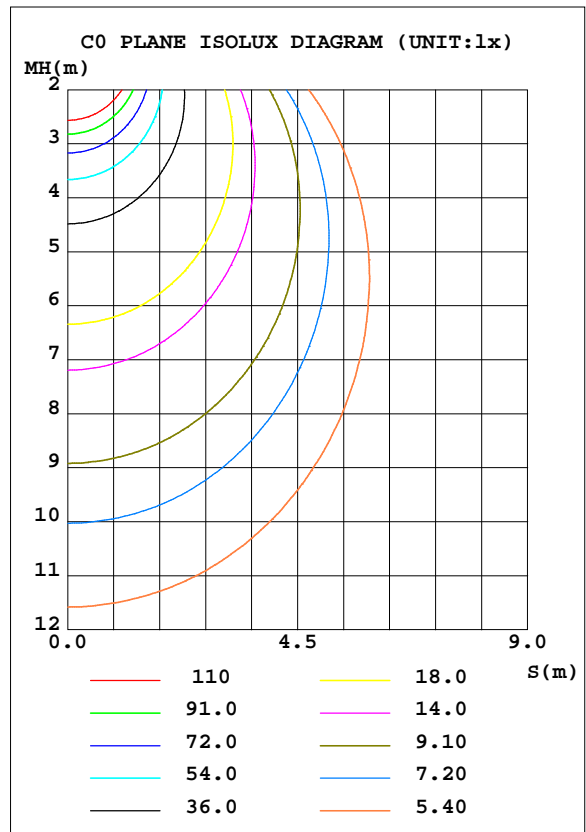
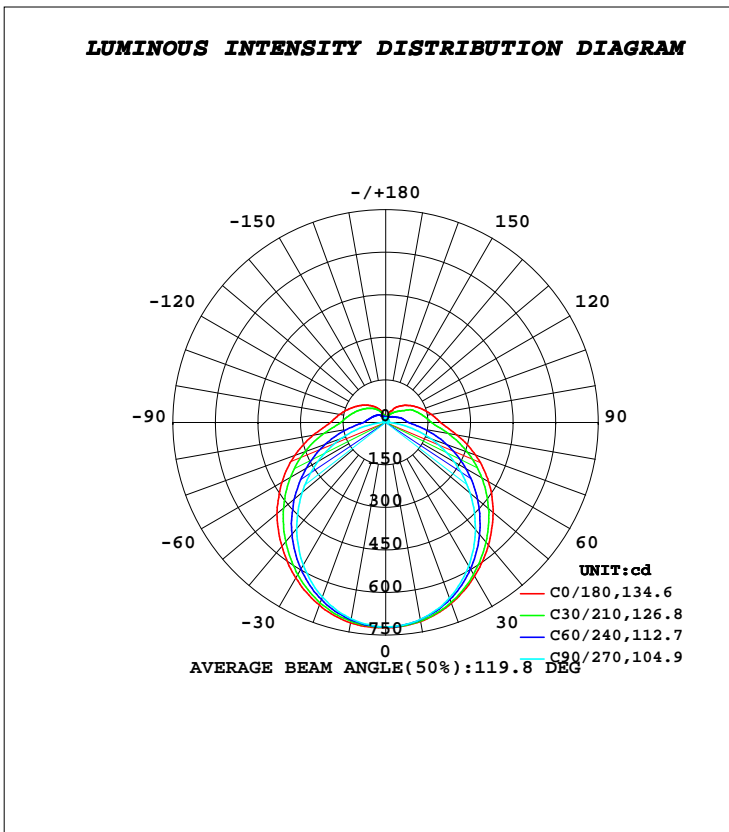


LUMINAIRE PHOTOMETRIC TEST REPORT

Test:U:221.80V I:0.0930A P:19.900W PF:0.9860 Freq:50.00Hz		
Lamp Flux:2780.22x1 lm		
Name: NS57-1200MM-20W	Type: LED	
MFR.: Lumega Group	DIM.: L1255*W32*H43mm	
	SUR.: 1190*32mm	

DATA OF LAMP		PHOTOMETRIC DATA Eff: 139.71 lm/W			
MODEL		I _{max} (cd)	724.3	S/MH(C0/180)	1.29
NOMINAL POWER(W)	20	LOR(%)	100.0	S/MH(C90/270)	1.21
RATED VOLTAGE(V)	220	TOTAL FLUX(lm)	2780.2	η UP, DN(C0-180)	7.7,42.3
NOMINAL FLUX(lm)	2780.22	CIE CLASS	SEMI-D.	η UP, DN(C180-360)	7.7,42.3
LAMPS INSIDE	1	η up(%)	15.4	CIBSE SHR NOM	1.25
TEST VOLTAGE(V)	221	η down(%)	84.6	CIBSE SHR MAX	1.35



C Range: 0 - 360DEG
C Interval: 30.0DEG
Test Speed: HIGH
Temperature:25.3DEG
Operators:DAMIN
Test Date:2022-05-09

γ Range: 0 - 180DEG
γ Interval: 1.0DEG
Test System:EVERFINE GO-2000A_V1 SYSTEM V2.00.443
Humidity:65.0%
Test Distance:8.000m [K=0.7063]
Remarks:

ZONAL FLUX DIAGRAM

ZONAL FLUX DIAGRAM:

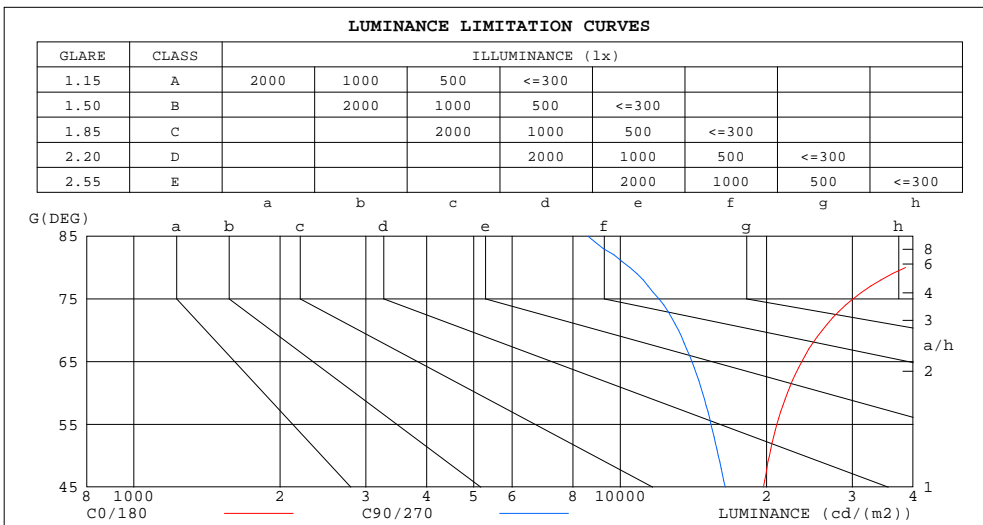
γ	C0	C45	C90	C135	C180	C225	C270	C315	γ	Φ zone	Φ total	%lum,lamp
10	712.5	708.3	705.0	708.1	717.4	709.3	703.1	705.8	0- 10	68.25	68.25	2.45,2.45
20	678.4	669.5	658.1	670.3	684.9	670.5	655.1	668.0	10- 20	195.3	263.6	9.48,9.48
30	627.1	608.3	585.1	609.7	634.0	608.7	580.8	608.4	20- 30	295.5	559.1	20.1,20.1
40	564.3	533.3	493.3	535.2	569.8	531.4	488.8	534.8	30- 40	357.7	916.8	33,33
50	495.1	448.9	388.7	450.9	500.7	446.0	385.0	453.3	40- 50	378.6	1295	46.6,46.6
60	419.1	359.8	280.5	363.5	422.5	356.0	276.3	366.9	50- 60	360.4	1656	59.6,59.6
70	338.1	269.0	171.2	274.0	341.7	265.4	168.1	278.7	60- 70	309.0	1965	70.7,70.7
80	254.9	181.7	69.10	187.6	259.4	178.7	67.03	187.5	70- 80	233.2	2198	79.1,79.1
90	194.0	121.3	8.312	128.6	195.4	118.7	9.393	122.7	80- 90	154.7	2353	84.6,84.6
100	164.4	100.5	7.830	107.0	165.5	98.48	8.522	109.5	90-100	116.1	2469	88.8,88.8
110	138.3	82.67	8.005	89.81	139.3	83.10	9.271	90.40	100-110	95.41	2564	92.2,92.2
120	115.5	64.37	9.226	75.69	116.4	70.60	10.40	71.68	110-120	74.73	2639	94.9,94.9
130	94.68	47.50	10.55	63.20	95.89	59.60	11.63	52.86	120-130	54.95	2694	96.9,96.9
140	75.72	36.78	12.05	51.69	77.01	49.04	12.99	40.18	130-140	38.54	2732	98.3,98.3
150	53.93	29.72	13.53	39.97	59.06	38.65	14.34	31.41	140-150	25.05	2757	99.2,99.2
160	36.33	24.50	14.89	29.06	40.91	28.61	15.44	24.65	150-160	14.36	2772	99.7,99.7
170	20.60	20.30	16.01	20.55	21.66	20.71	16.22	20.28	160-170	6.646	2778	99.9,99.9
180	16.24	16.50	16.55	16.43	16.29	16.49	16.54	16.43	170-180	1.757	2780	100,100
DEG	LUMINOUS INTENSITY:cd									UNIT:lm		

C Range: 0 - 360DEG
C Interval: 30.0DEG
Test Speed: HIGH
Temperature:25.3DEG
Operators:DAMIN
Test Date:2022-05-09

γ Range: 0 - 180DEG
 γ Interval: 1.0DEG
Test System:EVERFINE GO-2000A_V1 SYSTEM V2.00.443
Humidity:65.0%
Test Distance:8.000m [K=0.7063]
Remarks:

LUMINANCE LIMITATION CURVES

Test:U:221.80V I:0.0930A P:19.900W PF:0.9860 Freq:50.00Hz		
Lamp Flux:2780.22x1 lm		
Name: NS57-1200MM-20W	Type: LED	
MFR.: Lumega Group	DIM.: L1255*W32*H43mm	
	SUR.: 1190*32mm	



LUMINANCE cd/(m2)		
G(DEG)	C0/180	C90/270
85	66047	8585
80	38622	10472
75	30100	12016
70	26013	13175
65	23626	14056
60	22058	14763
55	21005	15376
50	20269	15915
45	19701	16456

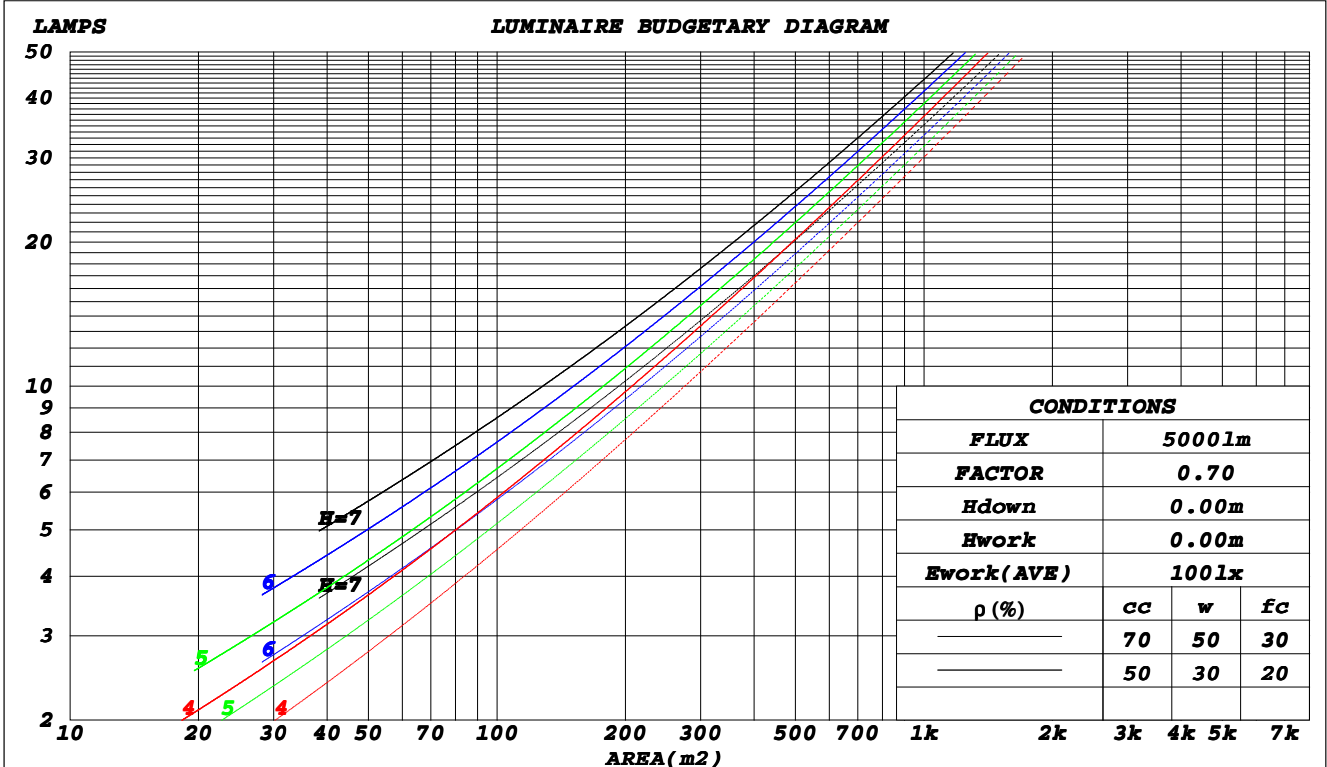
C Range: 0 - 360DEG
C Interval: 30.0DEG
Test Speed: HIGH
Temperature: 25.3DEG
Operators: DAMIN
Test Date: 2022-05-09

γ Range: 0 - 180DEG
γ Interval: 1.0DEG
Test System: EVERFINE GO-2000A_V1 SYSTEM V2.00.443
Humidity: 65.0%
Test Distance: 8.000m [K=0.7063]
Remarks:

CU AND LUMINAIRE BUDGETARY ESTIMATE DIAGRAM

Test:U:221.80V I:0.0930A P:19.900W PF:0.9860 Freq:50.00Hz		
Lamp Flux:2780.22x1 lm		
Name: NS57-1200MM-20W	Type: LED	
MFR.: Lumega Group	DIM.: L1255*W32*H43mm	
	SUR.: 1190*32mm	

ρ_{cc}	80%			70%			50%			30%			10%			0
ρ_w	50%	30%	10%	50%	30%	10%	50%	30%	10%	50%	30%	10%	50%	30%	10%	0
ρ_{fc}	20%			20%			20%			20%			20%			0
RCR	RCR:Room Cavity Ratio						Coefficients of Utilization(CU)									
0.0	1.15	1.15	1.15	1.11	1.11	1.11	1.03	1.03	1.03	.95	.95	.95	.88	.88	.88	.85
1.0	.98	.93	.88	.94	.89	.85	.87	.83	.80	.80	.77	.75	.74	.72	.70	.67
2.0	.84	.77	.70	.81	.74	.68	.75	.69	.64	.69	.65	.61	.64	.60	.57	.54
3.0	.73	.65	.58	.71	.63	.56	.65	.59	.53	.61	.55	.50	.56	.52	.48	.45
4.0	.65	.55	.48	.62	.54	.47	.58	.51	.45	.54	.48	.43	.50	.45	.41	.38
5.0	.57	.48	.41	.55	.47	.40	.52	.44	.39	.48	.42	.37	.45	.39	.35	.32
6.0	.52	.42	.36	.50	.41	.35	.46	.39	.34	.43	.37	.32	.40	.35	.31	.28
7.0	.47	.38	.31	.45	.37	.31	.42	.35	.30	.39	.33	.28	.37	.31	.27	.25
8.0	.42	.34	.28	.41	.33	.27	.38	.31	.26	.36	.30	.25	.34	.28	.24	.22
9.0	.39	.31	.25	.38	.30	.25	.35	.28	.24	.33	.27	.23	.31	.26	.22	.20
10.0	.36	.28	.23	.35	.27	.22	.33	.26	.21	.31	.25	.21	.29	.24	.20	.18



C Range: 0 - 360DEG
 C Interval: 30.0DEG
 Test Speed: HIGH
 Temperature: 25.3DEG
 Operators: DAMIN
 Test Date: 2022-05-09

γ Range: 0 - 180DEG
 γ Interval: 1.0DEG
 Test System: EVERFINE GO-2000A_V1 SYSTEM V2.00.443
 Humidity: 65.0%
 Test Distance: 8.000m [K=0.7063]
 Remarks:

WEC AND CCEC

Test:U:221.80V I:0.0930A P:19.900W PF:0.9860 Freq:50.00Hz		
Lamp Flux:2780.22x1 lm		
Name: NS57-1200MM-20W	Type: LED	
MFR.: Lumega Group	DIM.: L1255*W32*H43mm	
	SUR.: 1190*32mm	

ρ_{cc}	80%			70%			50%			30%			10%			0
ρ_w	50%	30%	10%	50%	30%	10%	50%	30%	10%	50%	30%	10%	50%	30%	10%	0
ρ_{fc}	20%			20%			20%			20%			20%			0
RCR	RCR:Room Cavity Ratio						Wall Exitance Coefficients(WEC)									
0.0																
1.0	.357	.203	.064	.345	.197	.063	.323	.185	.059	.303	.175	.056	.284	.165	.053	
2.0	.317	.173	.053	.306	.168	.052	.286	.159	.049	.267	.150	.047	.250	.142	.045	
3.0	.285	.152	.045	.275	.147	.044	.257	.139	.042	.240	.132	.040	.225	.124	.039	
4.0	.258	.134	.039	.250	.131	.039	.233	.124	.037	.218	.117	.035	.204	.111	.034	
5.0	.236	.120	.035	.228	.117	.034	.213	.111	.033	.200	.105	.031	.187	.100	.030	
6.0	.217	.109	.031	.210	.106	.031	.197	.101	.029	.184	.096	.028	.172	.091	.027	
7.0	.201	.099	.028	.194	.097	.028	.182	.092	.027	.171	.087	.025	.160	.083	.024	
8.0	.187	.091	.026	.181	.089	.025	.170	.085	.024	.159	.081	.023	.149	.077	.022	
9.0	.174	.084	.024	.169	.082	.023	.159	.078	.022	.149	.075	.021	.140	.071	.020	
10.0	.164	.078	.022	.159	.077	.021	.149	.073	.021	.140	.069	.020	.131	.066	.019	

ρ_{cc}	80%			70%			50%			30%			10%			0
ρ_w	50%	30%	10%	50%	30%	10%	50%	30%	10%	50%	30%	10%	50%	30%	10%	0
ρ_{fc}	20%			20%			20%			20%			20%			0
RCR	RCR:Room Cavity Ratio						Ceiling Cavity Exitance Coefficients(CCEC)									
0.0	.308	.308	.308	.263	.263	.263	.179	.179	.179	.103	.103	.103	.033	.033	.033	
1.0	.302	.274	.249	.258	.235	.214	.177	.162	.148	.102	.094	.086	.033	.030	.028	
2.0	.294	.251	.214	.252	.216	.185	.173	.149	.129	.100	.087	.076	.032	.028	.025	
3.0	.287	.234	.192	.246	.202	.166	.169	.140	.117	.098	.082	.069	.031	.027	.023	
4.0	.279	.221	.177	.240	.191	.154	.165	.133	.108	.095	.078	.064	.031	.025	.021	
5.0	.272	.211	.167	.233	.183	.145	.161	.128	.102	.093	.075	.061	.030	.024	.020	
6.0	.264	.203	.160	.227	.176	.139	.157	.123	.098	.091	.072	.058	.029	.024	.019	
7.0	.257	.197	.154	.221	.170	.134	.153	.120	.095	.089	.070	.057	.029	.023	.019	
8.0	.251	.191	.150	.216	.166	.131	.149	.116	.093	.087	.069	.055	.028	.022	.018	
9.0	.245	.186	.147	.211	.162	.128	.146	.114	.091	.085	.067	.054	.028	.022	.018	
10.0	.239	.182	.144	.206	.158	.126	.143	.111	.089	.083	.066	.053	.027	.022	.018	

C Range: 0 - 360DEG
C Interval: 30.0DEG
Test Speed: HIGH
Temperature:25.3DEG
Operators:DAMIN
Test Date:2022-05-09

γ Range: 0 - 180DEG
 γ Interval: 1.0DEG
Test System:EVERFINE GO-2000A_V1 SYSTEM V2.00.443
Humidity:65.0%
Test Distance:8.000m [K=0.7063]
Remarks:

UGR(Unified Glare Rating) Table

Test:U:221.80V I:0.0930A P:19.900W PF:0.9860 Freq:50.00Hz		
Lamp Flux:2780.22x1 lm		
Name: NS57-1200MM-20W	Type: LED	
MFR.: Lumega Group	DIM.: L1255*W32*H43mm	
	SUR.: 1190*32mm	

ceiling/cavity	0.7	0.7	0.5	0.5	0.3	0.7	0.7	0.5	0.5	0.3
walls	0.5	0.3	0.5	0.3	0.3	0.5	0.3	0.5	0.3	0.3
working plane	0.2	0.2	0.2	0.2	0.2	0.2	0.2	0.2	0.2	0.2
Room dimensions	Viewed crosswise					Viewed endwise				
x = 2H y = 2H	22.7	24.1	23.2	24.6	25.1	21.2	22.6	21.7	23.1	23.6
3H	25.1	26.3	25.6	26.8	27.4	22.7	24.0	23.2	24.4	25.0
4H	26.3	27.5	26.8	28.0	28.6	23.3	24.5	23.8	25.0	25.6
6H	27.6	28.7	28.1	29.2	29.8	23.7	24.8	24.2	25.3	25.9
8H	28.3	29.4	28.9	29.9	30.5	23.8	24.9	24.4	25.4	26.0
12H	29.1	30.2	29.7	30.7	31.3	23.9	24.9	24.4	25.5	26.1
4H 2H	23.3	24.5	23.8	25.0	25.6	22.1	23.3	22.7	23.9	24.4
3H	25.8	26.9	26.4	27.4	28.1	23.9	24.9	24.4	25.5	26.1
4H	27.2	28.2	27.8	28.8	29.4	24.6	25.6	25.2	26.1	26.8
6H	28.7	29.6	29.4	30.2	30.9	25.2	26.0	25.8	26.6	27.3
8H	29.6	30.4	30.2	31.0	31.7	25.4	26.2	26.0	26.8	27.5
12H	30.5	31.3	31.2	31.9	32.6	25.5	26.3	26.2	26.9	27.6
8H 4H	27.5	28.3	28.2	29.0	29.7	25.4	26.2	26.0	26.8	27.5
6H	29.3	30.0	30.0	30.6	31.4	26.2	26.9	26.9	27.6	28.3
8H	30.4	31.0	31.0	31.6	32.4	26.6	27.2	27.3	27.9	28.6
12H	31.6	32.1	32.2	32.8	33.6	26.9	27.4	27.6	28.1	28.9
12H 4H	27.5	28.3	28.2	28.9	29.6	25.6	26.3	26.2	26.9	27.7
6H	29.4	30.0	30.1	30.7	31.5	26.6	27.2	27.3	27.9	28.7
8H	30.5	31.1	31.2	31.8	32.5	27.1	27.6	27.8	28.3	29.1
Variations with the observer position at spacings(CIE Pub.117):										
S = 1.0H	+ 0.1 / - 0.1					+ 0.1 / - 0.2				
1.5H	+ 0.2 / - 0.3					+ 0.2 / - 0.3				
2.0H	+ 0.2 / - 0.3					+ 0.2 / - 0.4				

CIE Pub.117, 2780 lm Total Lamp Luminous Flux Corrected (8log(F/F0) = 3.6)
 Area: 0.038 m2

C Range: 0 - 360DEG
C Interval: 30.0DEG
Test Speed: HIGH
Temperature:25.3DEG
Operators:DAMIN
Test Date:2022-05-09

γ Range: 0 - 180DEG
γ Interval: 1.0DEG
Test System:EVERFINE GO-2000A_V1 SYSTEM V2.00.443
Humidity:65.0%
Test Distance:8.000m [K=0.7063]
Remarks:

UTILIZATION FACTORS TABLE

Test:U:221.80V I:0.0930A P:19.900W PF:0.9860 Freq:50.00Hz Lamp Flux:2780.22x1 lm		
Name: NS57-1200MM-20W	Type: LED	
MFR.: Lumega Group	DIM.: L1255*W32*H43mm	
	SUR.: 1190*32mm	

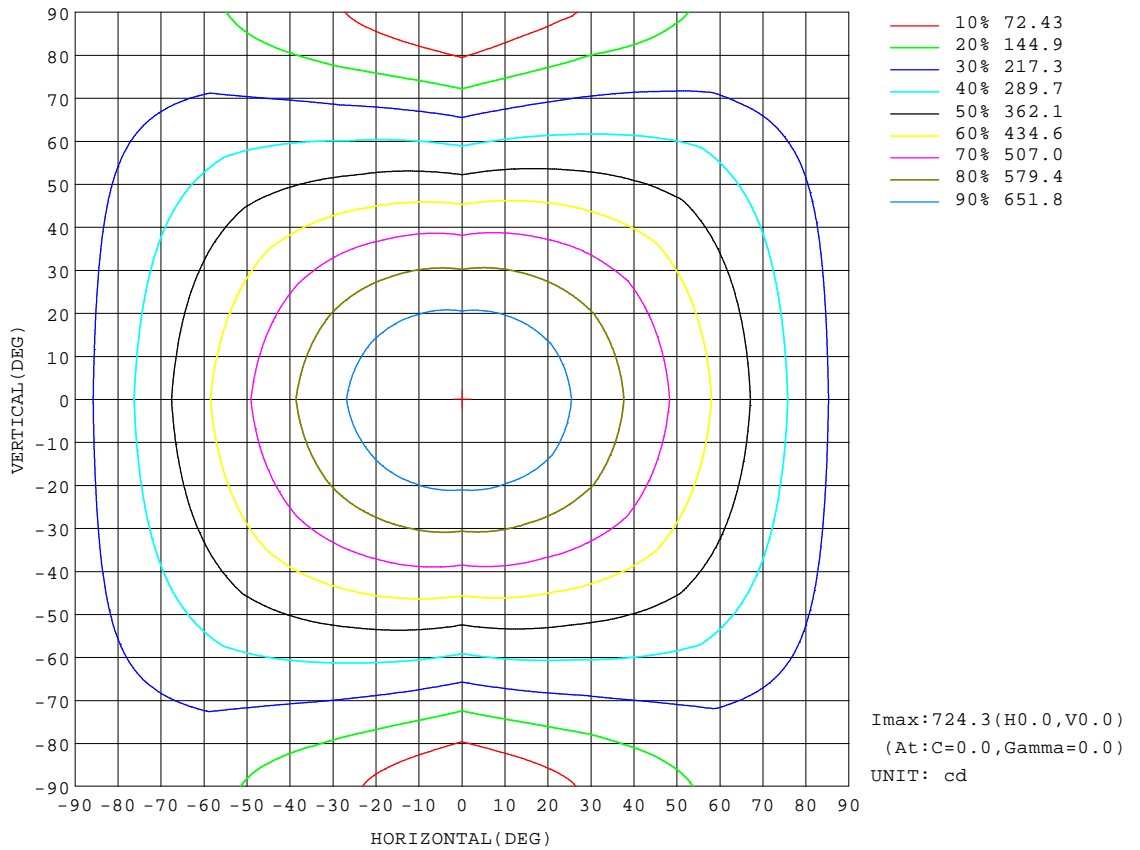
REFLECTANCE										
Ceiling	0.8	0.8	0.8	0.7	0.7	0.7	0.5	0.5	0.5	0
Walls	0.7	0.5	0.3	0.7	0.5	0.3	0.7	0.5	0.3	0
Working plane	0.2	0.2	0.2	0.2	0.2	0.2	0.2	0.2	0.2	0
ROOM INDEX	UTILIZATION FACTORS(PERCENT) $k(RI) \times RCR = 5$									
k = 0.60	50	38	31	49	38	31	47	37	30	24
0.80	60	47	39	58	46	39	56	45	38	31
1.00	68	55	47	66	54	47	62	55	46	37
1.25	75	63	54	72	61	54	68	59	52	43
1.50	80	68	60	77	67	59	72	64	57	47
2.00	87	76	69	84	74	67	78	71	65	54
2.50	91	82	74	88	79	73	82	75	69	57
3.00	95	86	79	91	83	77	85	79	73	61
4.00	99	92	86	95	89	83	89	83	79	65
5.00	102	96	90	98	92	88	91	87	83	68
ROOM INDEX	UF(total)									Direct
According to DIN EN 13032-2 2004			Suspended				SHRNOM = 1.25			

C Range: 0 - 360DEG
C Interval: 30.0DEG
Test Speed: HIGH
Temperature:25.3DEG
Operators:DAMIN
Test Date:2022-05-09

γ Range: 0 - 180DEG
γ Interval: 1.0DEG
Test System:EVERFINE GO-2000A_V1 SYSTEM V2.00.443
Humidity:65.0%
Test Distance:8.000m [K=0.7063]
Remarks:

ISOCANDELA DIAGRAM

Test:U:221.80V I:0.0930A P:19.900W PF:0.9860 Freq:50.00Hz		
Lamp Flux:2780.22x1 lm		
Name: NS57-1200MM-20W	Type: LED	
MFR.: Lumega Group	DIM.: L1255*W32*H43mm	
	SUR.: 1190*32mm	



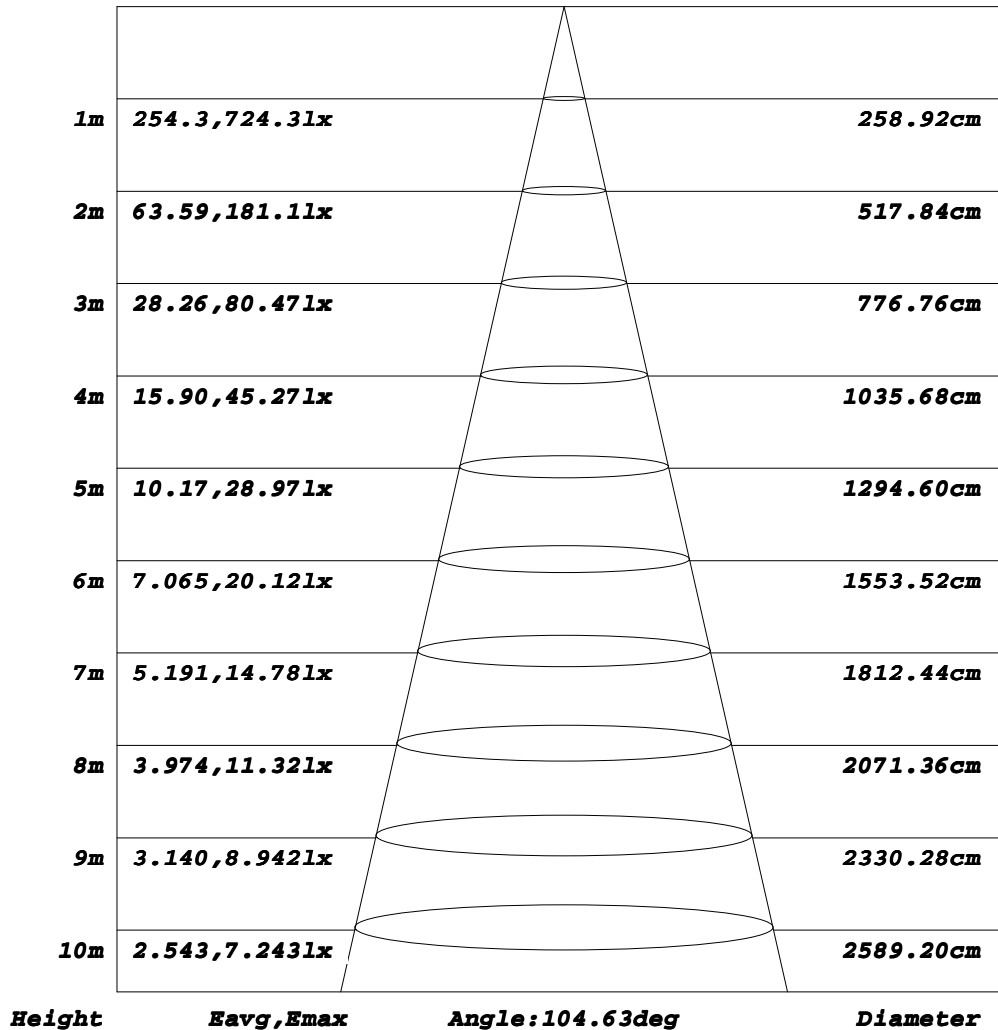
C Range: 0 - 360DEG
C Interval: 30.0DEG
Test Speed: HIGH
Temperature: 25.3DEG
Operators: DAMIN
Test Date: 2022-05-09

γ Range: 0 - 180DEG
γ Interval: 1.0DEG
Test System: EVERFINE GO-2000A_V1 SYSTEM V2.00.443
Humidity: 65.0%
Test Distance: 8.000m [K=0.7063]
Remarks:

AAI Figure

Test:U:221.80V I:0.0930A P:19.900W PF:0.9860 Freq:50.00Hz		
Lamp Flux:2780.22x1 lm		
Name: NS57-1200MM-20W	Type: LED	
MFR.: Lumega Group	DIM.: L1255*W32*H43mm	
	SUR.: 1190*32mm	

Flux out:1407 lm



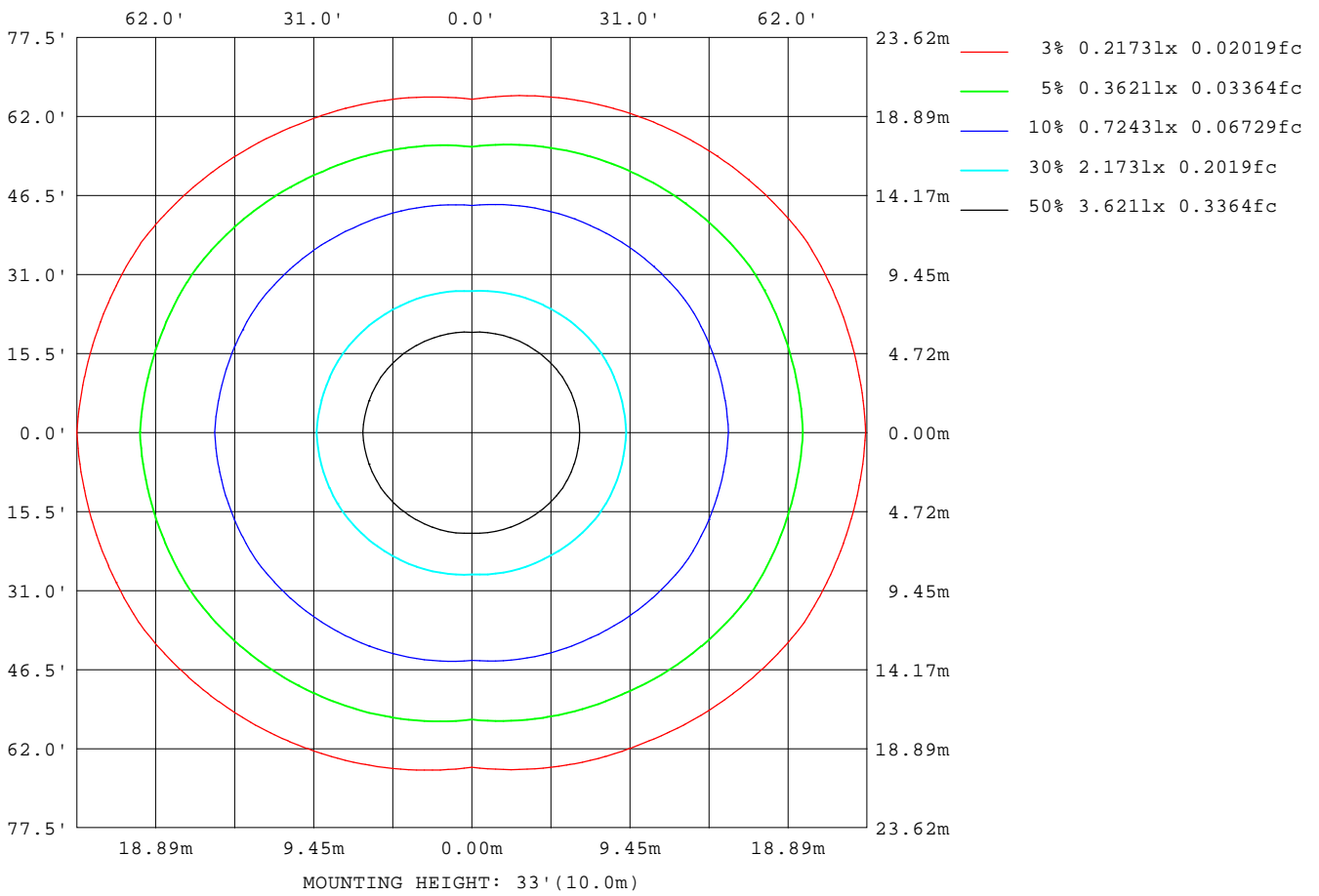
Note: The Curves indicate the illuminated area and the average illumination when the luminaire is at different distance.

C Range: 0 - 360DEG
C Interval: 30.0DEG
Test Speed: HIGH
Temperature: 25.3DEG
Operators: DAMIN
Test Date: 2022-05-09

γ Range: 0 - 180DEG
γ Interval: 1.0DEG
Test System: EVERFINE GO-2000A_V1 SYSTEM V2.00.443
Humidity: 65.0%
Test Distance: 8.000m [K=0.7063]
Remarks:

ISOLUX DIAGRAM

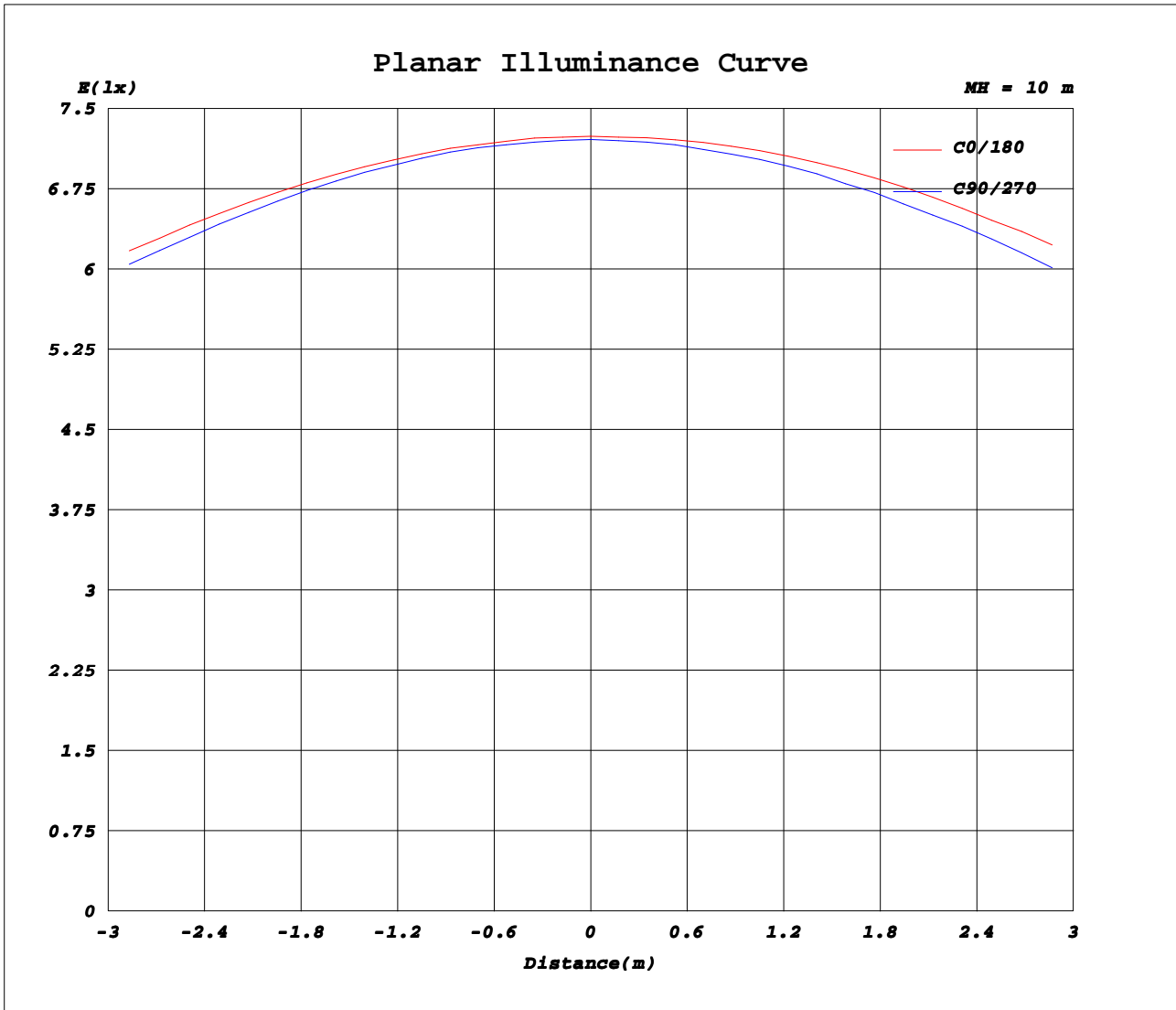
Test:U:221.80V I:0.0930A P:19.900W PF:0.9860 Freq:50.00Hz		
Lamp Flux:2780.22x1 lm		
Name: NS57-1200MM-20W	Type: LED	
MFR.: Lumega Group	DIM.: L1255*W32*H43mm	
	SUR.: 1190*32mm	



C Range: 0 - 360DEG
C Interval: 30.0DEG
Test Speed: HIGH
Temperature: 25.3DEG
Operators: DAMIN
Test Date: 2022-05-09

γ Range: 0 - 180DEG
γ Interval: 1.0DEG
Test System: EVERFINE GO-2000A_V1 SYSTEM V2.00.443
Humidity: 65.0%
Test Distance: 8.000m [K=0.7063]
Remarks:

Planar Illuminance Curve



C Range: 0 - 360DEG
C Interval: 30.0DEG
Test Speed: HIGH
Temperature: 25.3DEG
Operators: DAMIN
Test Date: 2022-05-09

γ Range: 0 - 180DEG
γ Interval: 1.0DEG
Test System: EVERFINE GO-2000A_V1 SYSTEM V2.00.443
Humidity: 65.0%
Test Distance: 8.000m [K=0.7063]
Remarks:

LUMINOUS DISTRIBUTION INTENSITY DATA

Test:U:221.80V I:0.0930A P:19.900W PF:0.9860 Freq:50.00Hz Lamp Flux:2780.22x1 lm		
Name: NS57-1200MM-20W	Type: LED	
MFR.: Lumega Group	DIM.: L1255*W32*H43mm	
	SUR.: 1190*32mm	

Table--1

UNIT: cd

C (DEG) \ γ (DEG)	0	30	60	90	120	150	180	210	240	270	300	330							
0	724	723	722	721	720	720	724	723	722	721	720	720							
5	721	719	718	718	716	718	723	720	718	715	716	716							
10	713	711	706	705	707	710	717	712	707	703	705	707							
15	698	696	689	685	689	696	705	698	689	683	687	693							
20	678	675	664	658	665	676	685	677	664	655	663	673							
25	654	649	634	625	636	649	662	650	633	621	633	648							
30	627	619	597	585	600	619	634	620	597	581	599	618							
35	597	586	558	541	561	587	603	586	557	537	560	586							
40	564	551	516	493	519	551	570	549	514	489	518	551							
45	529	513	470	442	474	514	536	510	468	437	473	515							
50	495	474	424	389	428	473	501	470	422	385	429	477							
55	458	433	376	335	381	433	461	430	373	331	382	438							
60	419	392	328	280	334	393	423	388	324	276	335	398							
65	379	350	280	226	287	351	383	346	275	222	289	357							
70	338	307	231	171	239	309	342	303	227	168	242	315							
75	296	264	184	118	192	267	300	261	181	115	197	270							
80	255	223	140	69.1	149	226	259	220	138	67.0	154	221							
85	219	187	103	28.4	113	190	222	183	101	28.1	115	186							
90	194	162	80.7	8.31	91.4	166	195	159	78.7	9.39	79.7	166							
95	179	148	71.8	7.61	81.8	152	180	146	69.9	8.59	82.2	151							
100	164	136	64.9	7.83	74.2	140	165	134	63.4	8.52	76.7	142							
105	151	125	59.3	7.98	67.8	128	152	123	57.9	8.86	70.1	131							
110	138	114	51.1	8.01	62.3	117	139	113	53.5	9.27	60.6	120							
115	126	105	44.4	8.59	57.4	107	127	103	49.9	9.77	52.8	110							
120	115	89.6	39.2	9.23	53.1	98.2	116	94.6	46.6	10.4	46.2	97.2							
125	105	74.2	35.1	9.89	49.3	89.4	106	86.4	43.5	11.0	41.0	81.3							
130	94.7	63.2	31.8	10.6	45.4	81.0	95.9	78.6	40.6	11.6	36.8	68.9							
135	85.0	54.9	29.0	11.3	41.8	73.0	86.6	71.1	37.8	12.3	33.3	59.0							
140	75.7	47.5	26.0	12.0	38.1	65.3	77.0	63.8	34.2	13.0	29.9	50.5							
145	66.6	41.0	24.9	12.8	33.7	57.7	68.0	56.7	30.3	13.7	26.9	43.1							
150	53.9	35.4	24.0	13.5	29.6	50.4	59.1	49.7	27.6	14.3	25.9	36.9							
155	44.4	29.9	23.0	14.2	26.4	42.5	50.4	42.1	25.1	14.9	24.7	30.9							
160	36.3	27.2	21.8	14.9	23.5	34.7	40.9	34.6	22.6	15.4	23.2	26.1							
165	24.5	24.7	20.4	15.5	20.8	28.0	31.6	28.4	20.5	15.9	21.5	23.6							
170	20.6	21.7	18.9	16.0	18.7	22.4	21.7	22.8	18.6	16.2	19.6	21.0							
175	18.0	18.6	17.6	16.4	17.2	18.2	17.8	18.6	17.2	16.4	17.9	18.5							
180	16.2	16.5	16.5	16.6	16.5	16.3	16.3	16.4	16.6	16.5	16.5	16.3							

C Range: 0 - 360DEG
C Interval: 30.0DEG
Test Speed: HIGH
Temperature: 25.3DEG
Operators: DAMIN
Test Date: 2022-05-09

γ Range: 0 - 180DEG
γ Interval: 1.0DEG
Test System: EVERFINE GO-2000A_V1 SYSTEM V2.00.443
Humidity: 65.0%
Test Distance: 8.000m [K=0.7063]
Remarks: