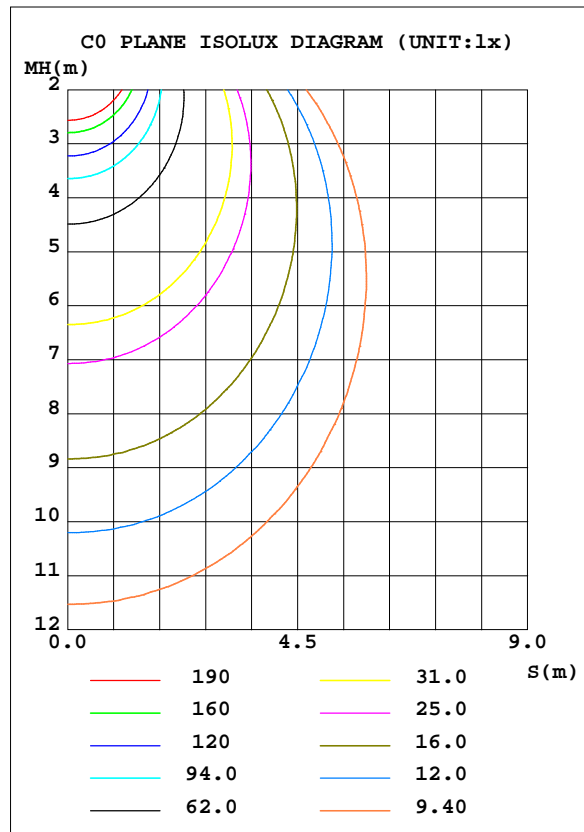
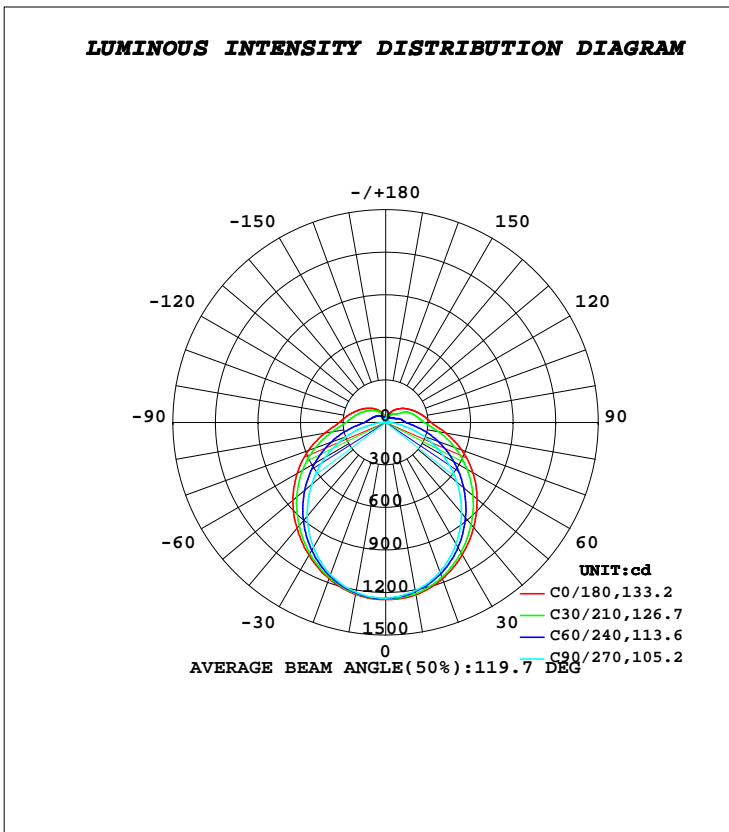


LUMINAIRE PHOTOMETRIC TEST REPORT

Test:U:221.80V I:0.1610A P:34.200W PF:0.9710 Freq:50.00Hz		
Lamp Flux:4735.3lx1 lm		
Name: NS57-1500MM-35W	Type: LED	
MFR.: Lumega Group	DIM.: L1500*W32*H43mm	
	SUR.: 1490*32mm	

DATA OF LAMP		PHOTOMETRIC DATA Eff: 138.46 lm/W			
MODEL		I _{max} (cd)	1249	S/MH(C0/180)	1.29
NOMINAL POWER(W)	35	LOR(%)	100.0	S/MH(C90/270)	1.20
RATED VOLTAGE(V)	220	TOTAL FLUX(lm)	4735.3	η UP, DN(C0-180)	7.3,42.0
NOMINAL FLUX(lm)	4735.31	CIE CLASS	SEMI-D.	η UP, DN(C180-360)	7.6,43.1
LAMPS INSIDE	1	η up(%)	14.9	CIBSE SHR NOM	1.25
TEST VOLTAGE(V)	221	η down(%)	85.1	CIBSE SHR MAX	1.35



C Range: 0 - 360DEG
C Interval: 30.0DEG
Test Speed: HIGH
Temperature:25.3DEG
Operators:DAMIN
Test Date:2022-05-09

γ Range: 0 - 180DEG
γ Interval: 1.0DEG
Test System:EVERFINE GO-2000A_V1 SYSTEM V2.00.443
Humidity:65.0%
Test Distance:8.000m [K=0.7063]
Remarks:

ZONAL FLUX DIAGRAM

ZONAL FLUX DIAGRAM:

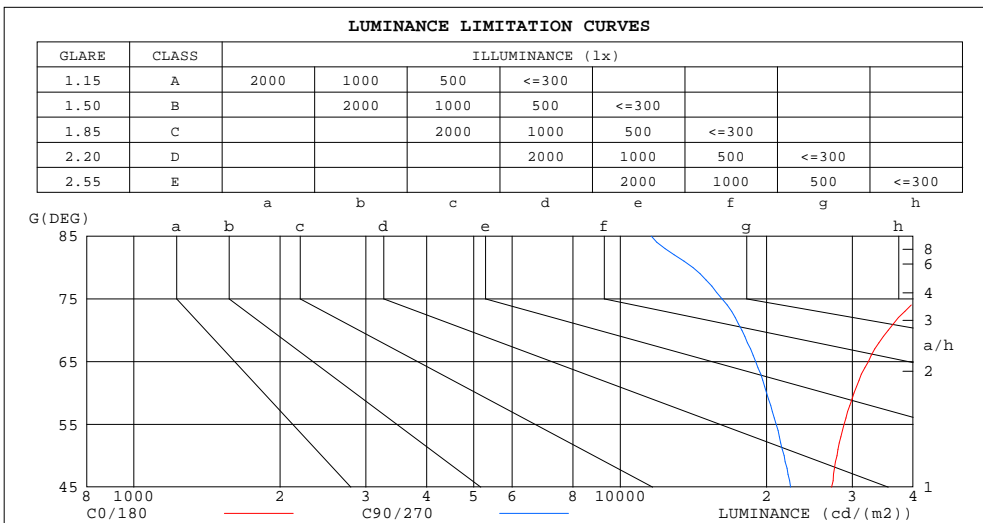
γ	C0	C45	C90	C135	C180	C225	C270	C315	γ	Φ zone	Φ total	%lum,lamp
10	1234	1218	1204	1205	1232	1223	1215	1220	0- 10	117.4	117.4	2.48,2.48
20	1173	1149	1119	1134	1171	1158	1142	1157	10- 20	335.7	453.0	9.57,9.57
30	1079	1040	991.0	1027	1082	1057	1019	1056	20- 30	507.6	960.7	20.3,20.3
40	966.7	907.9	833.1	896.6	973.7	925.8	860.1	926.2	30- 40	613.9	1575	33.3,33.3
50	843.7	762.3	656.4	754.1	855.0	783.0	681.3	781.5	40- 50	649.1	2224	47,47
60	710.9	611.1	470.3	603.9	723.0	628.8	491.0	627.8	50- 60	617.0	2841	60,60
70	571.8	457.8	286.1	450.7	580.8	470.7	299.4	472.0	60- 70	527.5	3368	71.1,71.1
80	428.3	311.6	115.2	304.5	435.9	319.1	117.7	322.4	70- 80	397.1	3765	79.5,79.5
90	322.6	208.0	13.06	205.8	328.1	215.1	13.32	208.7	80- 90	262.8	4028	85.1,85.1
100	271.1	171.4	13.24	169.4	275.9	176.6	13.48	166.2	90-100	193.1	4221	89.1,89.1
110	226.8	137.2	14.60	141.5	230.1	147.5	14.93	143.0	100-110	157.0	4378	92.5,92.5
120	189.1	104.2	15.98	119.1	191.5	124.2	16.87	111.7	110-120	122.7	4501	95.1,95.1
130	155.2	71.47	17.94	99.97	157.8	104.2	19.09	85.27	120-130	89.35	4590	96.9,96.9
140	123.5	61.75	20.78	82.64	126.9	86.11	21.72	70.38	130-140	63.43	4654	98.3,98.3
150	94.84	50.95	23.58	65.06	97.52	67.68	24.29	56.71	140-150	42.40	4696	99.2,99.2
160	62.30	42.67	26.10	48.61	68.47	50.47	26.40	44.83	150-160	24.65	4721	99.7,99.7
170	33.47	35.30	28.02	35.30	36.62	36.19	28.02	35.09	160-170	11.54	4732	99.9,99.9
180	27.57	28.43	28.83	28.54	27.72	28.43	28.88	28.56	170-180	3.025	4735	100,100
DEG	LUMINOUS INTENSITY:cd									UNIT:lm		

C Range: 0 - 360DEG
C Interval: 30.0DEG
Test Speed: HIGH
Temperature:25.3DEG
Operators:DAMIN
Test Date:2022-05-09

γ Range: 0 - 180DEG
 γ Interval: 1.0DEG
Test System:EVERFINE GO-2000A_V1 SYSTEM V2.00.443
Humidity:65.0%
Test Distance:8.000m [K=0.7063]
Remarks:

LUMINANCE LIMITATION CURVES

Test:U:221.80V I:0.1610A P:34.200W PF:0.9710 Freq:50.00Hz		
Lamp Flux:4735.31x1 lm		
Name: NS57-1500MM-35W	Type: LED	
MFR.: Lumega Group	DIM.: L1500*W32*H43mm	
	SUR.: 1490*32mm	



LUMINANCE cd/(m2)		
G (DEG)	C0/180	C90/270
85	89466	11599
80	52481	14110
75	41041	16193
70	35568	17796
65	32363	19003
60	30249	20013
55	28848	20928
50	27926	21727
45	27214	22423

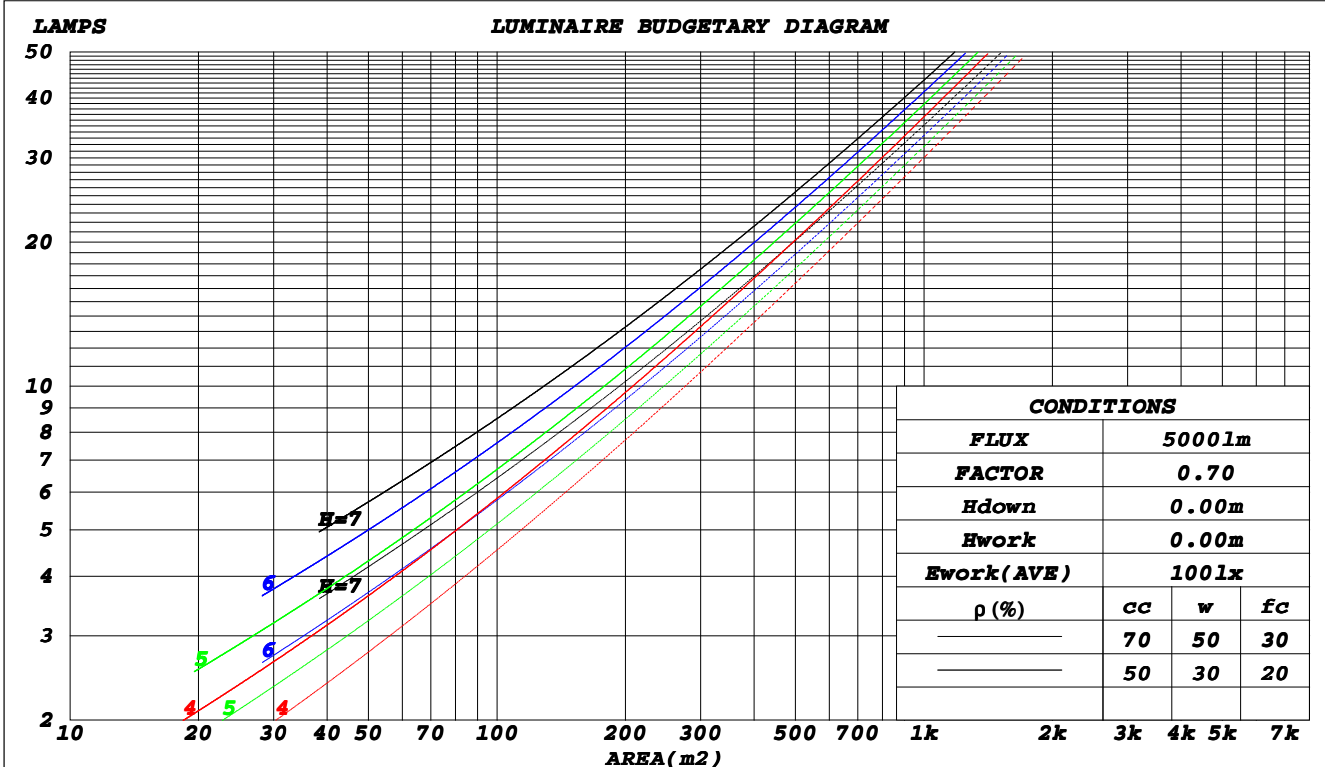
C Range: 0 - 360DEG
C Interval: 30.0DEG
Test Speed: HIGH
Temperature: 25.3DEG
Operators: DAMIN
Test Date: 2022-05-09

γ Range: 0 - 180DEG
γ Interval: 1.0DEG
Test System: EVERFINE GO-2000A_V1 SYSTEM V2.00.443
Humidity: 65.0%
Test Distance: 8.000m [K=0.7063]
Remarks:

CU AND LUMINAIRE BUDGETARY ESTIMATE DIAGRAM

Test:U:221.80V I:0.1610A P:34.200W PF:0.9710 Freq:50.00Hz		
Lamp Flux:4735.31lx1 lm		
Name: NS57-1500MM-35W	Type: LED	
MFR.: Lumega Group	DIM.: L1500*W32*H43mm	
	SUR.: 1490*32mm	

ρ_{cc}	80%			70%			50%			30%			10%			0
ρ_w	50%	30%	10%	50%	30%	10%	50%	30%	10%	50%	30%	10%	50%	30%	10%	0
ρ_{fc}	20%			20%			20%			20%			20%			0
RCR	RCR:Room Cavity Ratio						Coefficients of Utilization(CU)									
0.0	1.15	1.15	1.15	1.11	1.11	1.11	1.03	1.03	1.03	.95	.95	.95	.88	.88	.88	.85
1.0	.98	.93	.88	.94	.90	.86	.87	.83	.80	.81	.78	.75	.75	.72	.70	.67
2.0	.84	.77	.71	.81	.74	.69	.75	.69	.65	.69	.65	.61	.64	.61	.57	.54
3.0	.73	.65	.58	.71	.63	.56	.66	.59	.53	.61	.55	.51	.56	.52	.48	.45
4.0	.65	.56	.49	.62	.54	.47	.58	.51	.45	.54	.48	.43	.50	.45	.41	.38
5.0	.58	.48	.41	.56	.47	.41	.52	.44	.39	.48	.42	.37	.45	.40	.35	.33
6.0	.52	.43	.36	.50	.41	.35	.47	.39	.34	.43	.37	.32	.41	.35	.31	.28
7.0	.47	.38	.32	.45	.37	.31	.42	.35	.30	.40	.33	.28	.37	.31	.27	.25
8.0	.43	.34	.28	.41	.33	.27	.39	.32	.26	.36	.30	.25	.34	.28	.24	.22
9.0	.39	.31	.25	.38	.30	.25	.35	.29	.24	.33	.27	.23	.31	.26	.22	.20
10.0	.36	.28	.23	.35	.27	.22	.33	.26	.21	.31	.25	.21	.29	.24	.20	.18



C Range: 0 - 360DEG
 C Interval: 30.0DEG
 Test Speed: HIGH
 Temperature: 25.3DEG
 Operators: DAMIN
 Test Date: 2022-05-09

γ Range: 0 - 180DEG
 γ Interval: 1.0DEG
 Test System: EVERFINE GO-2000A_V1 SYSTEM V2.00.443
 Humidity: 65.0%
 Test Distance: 8.000m [K=0.7063]
 Remarks:

WEC AND CCEC

Test:U:221.80V I:0.1610A P:34.200W PF:0.9710 Freq:50.00Hz		
Lamp Flux:4735.31x1 lm		
Name: NS57-1500MM-35W	Type: LED	
MFR.: Lumega Group	DIM.: L1500*W32*H43mm	
	SUR.: 1490*32mm	

ρ_{cc}	80%			70%			50%			30%			10%			0
ρ_w	50%	30%	10%	50%	30%	10%	50%	30%	10%	50%	30%	10%	50%	30%	10%	0
ρ_{fc}	20%			20%			20%			20%			20%			0
RCR	RCR:Room Cavity Ratio						Wall Exitance Coefficients(WEC)									
0.0																
1.0	.357	.203	.064	.345	.197	.063	.323	.186	.059	.303	.175	.056	.285	.165	.053	
2.0	.316	.173	.053	.306	.169	.052	.286	.159	.049	.268	.150	.047	.251	.142	.045	
3.0	.285	.151	.045	.275	.147	.044	.257	.139	.042	.241	.132	.040	.225	.125	.039	
4.0	.258	.134	.039	.250	.131	.039	.234	.124	.037	.219	.117	.035	.205	.111	.034	
5.0	.236	.120	.035	.228	.117	.034	.214	.111	.033	.200	.106	.031	.187	.100	.030	
6.0	.217	.109	.031	.210	.106	.031	.197	.101	.029	.184	.096	.028	.173	.091	.027	
7.0	.201	.099	.028	.195	.097	.028	.182	.092	.027	.171	.088	.026	.160	.083	.024	
8.0	.187	.091	.026	.181	.089	.025	.170	.085	.024	.159	.081	.023	.150	.077	.022	
9.0	.174	.084	.024	.169	.082	.023	.159	.079	.022	.149	.075	.021	.140	.071	.021	
10.0	.164	.078	.022	.159	.077	.021	.149	.073	.021	.140	.070	.020	.132	.066	.019	

ρ_{cc}	80%			70%			50%			30%			10%			0
ρ_w	50%	30%	10%	50%	30%	10%	50%	30%	10%	50%	30%	10%	50%	30%	10%	0
ρ_{fc}	20%			20%			20%			20%			20%			0
RCR	RCR:Room Cavity Ratio						Ceiling Cavity Exitance Coefficients(CCEC)									
0.0	.304	.304	.304	.260	.260	.260	.177	.177	.177	.102	.102	.102	.033	.033	.033	
1.0	.298	.270	.245	.255	.232	.211	.175	.160	.146	.100	.092	.085	.032	.030	.027	
2.0	.291	.247	.211	.249	.213	.182	.171	.147	.127	.099	.086	.074	.032	.028	.024	
3.0	.283	.231	.188	.243	.199	.163	.167	.138	.115	.096	.081	.068	.031	.026	.022	
4.0	.276	.218	.174	.237	.188	.151	.163	.131	.106	.094	.077	.063	.030	.025	.021	
5.0	.268	.208	.163	.230	.180	.142	.159	.126	.100	.092	.074	.060	.030	.024	.020	
6.0	.261	.200	.156	.224	.173	.136	.155	.121	.096	.090	.071	.057	.029	.023	.019	
7.0	.254	.193	.151	.218	.167	.131	.151	.117	.093	.088	.069	.055	.028	.023	.018	
8.0	.247	.188	.146	.213	.163	.128	.147	.114	.091	.086	.067	.054	.028	.022	.018	
9.0	.241	.183	.143	.208	.159	.125	.144	.111	.089	.084	.066	.053	.027	.022	.018	
10.0	.235	.179	.141	.203	.155	.123	.141	.109	.087	.082	.065	.052	.027	.021	.017	

C Range: 0 - 360DEG
C Interval: 30.0DEG
Test Speed: HIGH
Temperature:25.3DEG
Operators:DAMIN
Test Date:2022-05-09

γ Range: 0 - 180DEG
 γ Interval: 1.0DEG
Test System:EVERFINE GO-2000A_V1 SYSTEM V2.00.443
Humidity:65.0%
Test Distance:8.000m [K=0.7063]
Remarks:

UGR(Unified Glare Rating) Table

Test:U:221.80V I:0.1610A P:34.200W PF:0.9710 Freq:50.00Hz		
Lamp Flux:4735.31x1 lm		
Name: NS57-1500MM-35W	Type: LED	
MFR.: Lumega Group	DIM.: L1500*W32*H43mm	
	SUR.: 1490*32mm	

ceiling/cavity	0.7	0.7	0.5	0.5	0.3	0.7	0.7	0.5	0.5	0.3
walls	0.5	0.3	0.5	0.3	0.3	0.5	0.3	0.5	0.3	0.3
working plane	0.2	0.2	0.2	0.2	0.2	0.2	0.2	0.2	0.2	0.2
Room dimensions	Viewed crosswise					Viewed endwise				
x = 2H y = 2H	23.8	25.2	24.3	25.7	26.2	22.3	23.7	22.8	24.1	24.6
3H	26.1	27.4	26.6	27.9	28.4	23.8	25.0	24.3	25.5	26.1
4H	27.4	28.6	27.9	29.1	29.6	24.3	25.5	24.9	26.0	26.6
6H	28.7	29.8	29.2	30.3	30.9	24.7	25.9	25.3	26.4	27.0
8H	29.4	30.5	29.9	31.0	31.6	24.9	26.0	25.4	26.5	27.1
12H	30.2	31.2	30.7	31.8	32.4	24.9	26.0	25.5	26.5	27.1
4H 2H	24.4	25.6	24.9	26.1	26.7	23.2	24.4	23.8	24.9	25.5
3H	26.9	28.0	27.5	28.5	29.1	24.9	26.0	25.5	26.5	27.2
4H	28.3	29.3	28.9	29.9	30.5	25.7	26.7	26.3	27.2	27.9
6H	29.8	30.7	30.4	31.3	32.0	26.3	27.2	26.9	27.8	28.4
8H	30.6	31.5	31.3	32.1	32.8	26.5	27.3	27.1	27.9	28.6
12H	31.6	32.3	32.2	33.0	33.7	26.6	27.4	27.3	28.0	28.7
8H 4H	28.6	29.4	29.3	30.0	30.7	26.5	27.3	27.1	27.9	28.6
6H	30.4	31.1	31.1	31.7	32.5	27.4	28.0	28.0	28.7	29.4
8H	31.4	32.0	32.1	32.7	33.5	27.7	28.3	28.4	29.0	29.8
12H	32.6	33.1	33.3	33.8	34.6	28.1	28.6	28.7	29.3	30.0
12H 4H	28.6	29.4	29.3	30.0	30.7	26.7	27.4	27.3	28.1	28.8
6H	30.5	31.1	31.2	31.8	32.5	27.8	28.4	28.4	29.0	29.8
8H	31.6	32.2	32.3	32.8	33.6	28.3	28.8	29.0	29.5	30.3
Variations with the observer position at spacings(CIE Pub.117):										
S = 1.0H	+ 0.1 / - 0.1					+ 0.1 / - 0.2				
1.5H	+ 0.2 / - 0.3					+ 0.2 / - 0.3				
2.0H	+ 0.2 / - 0.3					+ 0.2 / - 0.4				

CIE Pub.117, 4735 lm Total Lamp Luminous Flux Corrected (8log(F/F0) = 5.4)
 Area: 0.047 m2

C Range: 0 - 360DEG
C Interval: 30.0DEG
Test Speed: HIGH
Temperature:25.3DEG
Operators:DAMIN
Test Date:2022-05-09

γ Range: 0 - 180DEG
γ Interval: 1.0DEG
Test System:EVERFINE GO-2000A_V1 SYSTEM V2.00.443
Humidity:65.0%
Test Distance:8.000m [K=0.7063]
Remarks:

UTILIZATION FACTORS TABLE

Test:U:221.80V I:0.1610A P:34.200W PF:0.9710 Freq:50.00Hz Lamp Flux:4735.31x1 lm		
Name: NS57-1500MM-35W	Type: LED	
MFR.: Lumega Group	DIM.: L1500*W32*H43mm	
	SUR.: 1490*32mm	

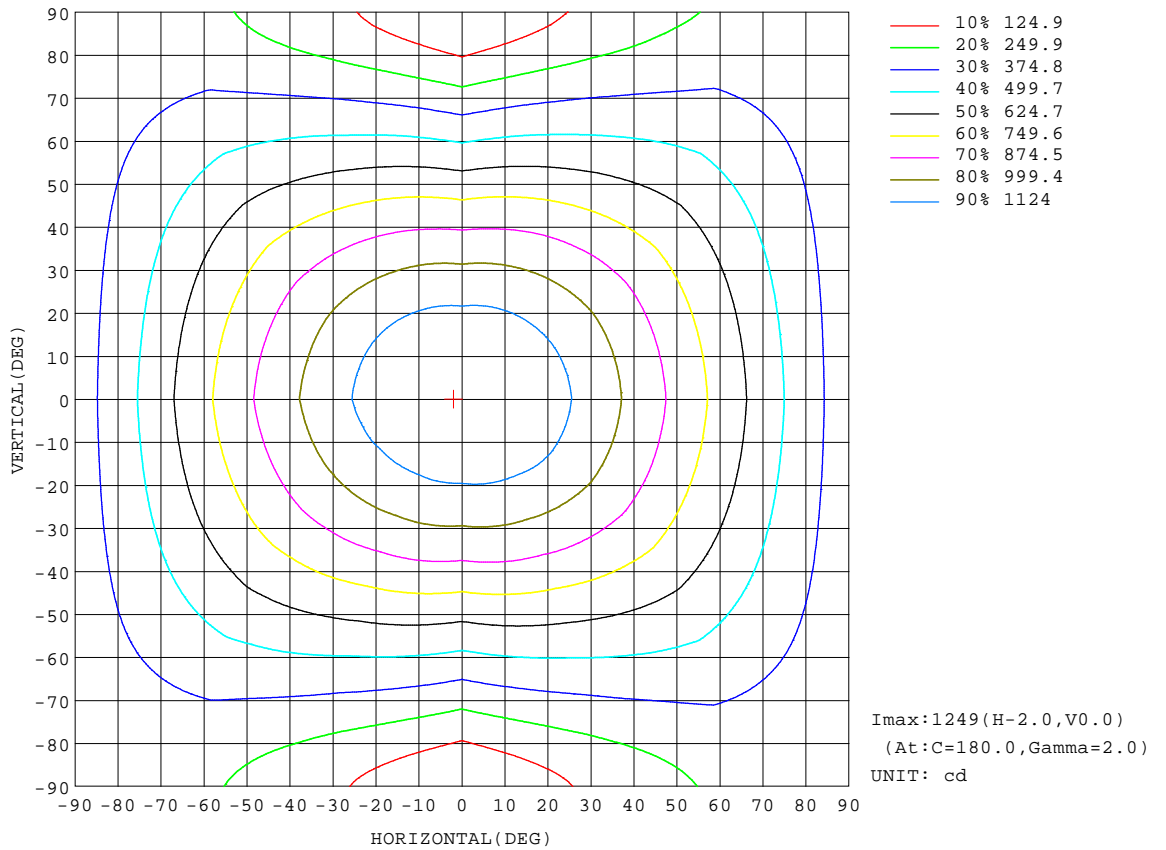
REFLECTANCE										
Ceiling	0.8	0.8	0.8	0.7	0.7	0.7	0.5	0.5	0.5	0
Walls	0.7	0.5	0.3	0.7	0.5	0.3	0.7	0.5	0.3	0
Working plane	0.2	0.2	0.2	0.2	0.2	0.2	0.2	0.2	0.2	0
ROOM INDEX	UTILIZATION FACTORS(PERCENT) $k(RI) \times RCR = 5$									
k = 0.60	50	38	31	49	38	31	48	37	31	24
0.80	60	47	40	58	47	39	56	45	38	31
1.00	68	55	47	66	54	47	63	55	46	37
1.25	75	63	55	72	62	54	68	59	52	43
1.50	80	68	60	77	67	59	73	64	57	47
2.00	87	77	69	84	75	68	79	71	65	54
2.50	91	82	74	88	79	73	82	75	70	58
3.00	95	86	79	91	84	77	85	79	74	61
4.00	99	92	86	96	89	84	89	84	79	66
5.00	102	96	90	98	93	88	91	87	83	69
ROOM INDEX	UF(total)									Direct
According to DIN EN 13032-2 2004			Suspended					SHRNOM = 1.25		

C Range: 0 - 360DEG
C Interval: 30.0DEG
Test Speed: HIGH
Temperature:25.3DEG
Operators:DAMIN
Test Date:2022-05-09

γ Range: 0 - 180DEG
γ Interval: 1.0DEG
Test System:EVERFINE GO-2000A_V1 SYSTEM V2.00.443
Humidity:65.0%
Test Distance:8.000m [K=0.7063]
Remarks:

ISOCANDELA DIAGRAM

Test:U:221.80V I:0.1610A P:34.200W PF:0.9710 Freq:50.00Hz		
Lamp Flux:4735.31x1 l m		
Name: NS57-1500MM-35W	Type: LED	
MFR.: Lumega Group	DIM.: L1500*W32*H43mm	
	SUR.: 1490*32mm	



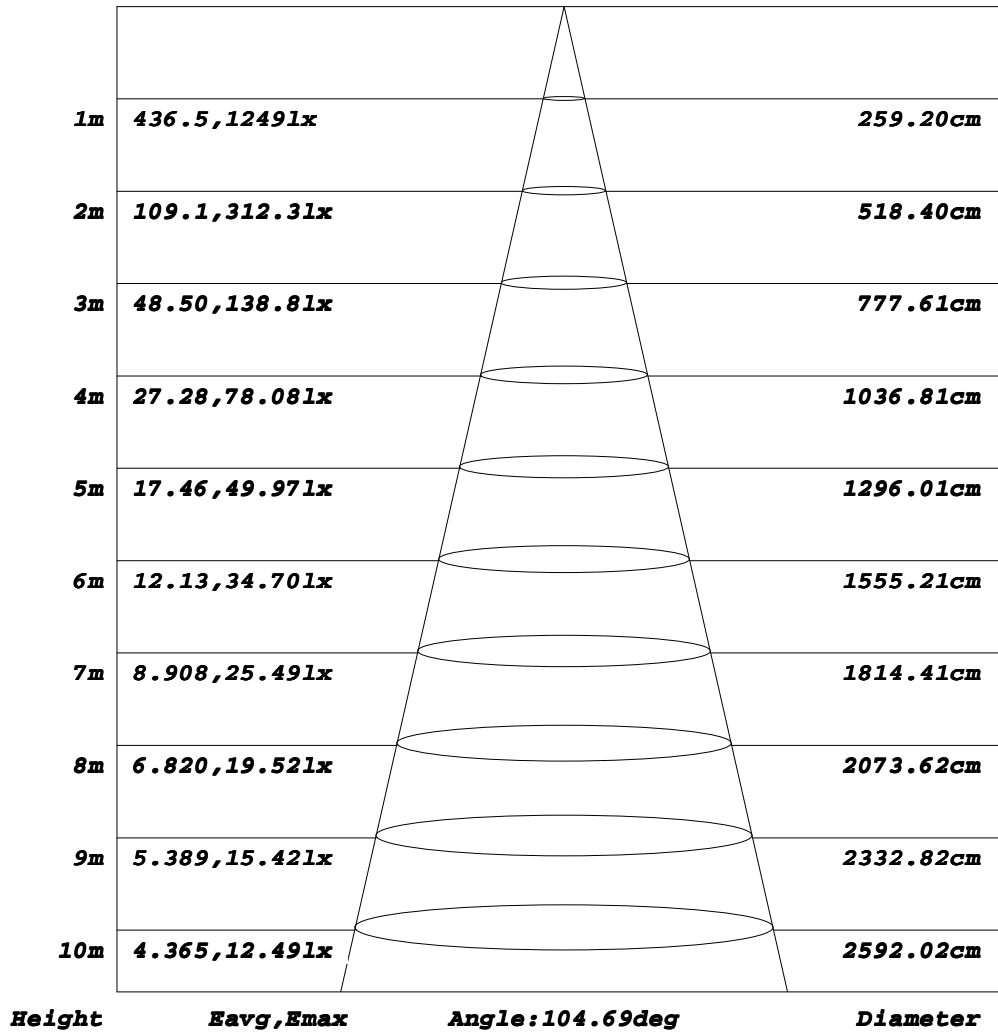
C Range: 0 - 360DEG
C Interval: 30.0DEG
Test Speed: HIGH
Temperature: 25.3DEG
Operators: DAMIN
Test Date: 2022-05-09

γ Range: 0 - 180DEG
γ Interval: 1.0DEG
Test System: EVERFINE GO-2000A_V1 SYSTEM V2.00.443
Humidity: 65.0%
Test Distance: 8.000m [K=0.7063]
Remarks:

AAI Figure

Test:U:221.80V I:0.1610A P:34.200W PF:0.9710 Freq:50.00Hz		
Lamp Flux:4735.3lx1 lm		
Name: NS57-1500MM-35W	Type: LED	
MFR.: Lumega Group	DIM.: L1500*W32*H43mm	
	SUR.: 1490*32mm	

Flux out:2415 lm



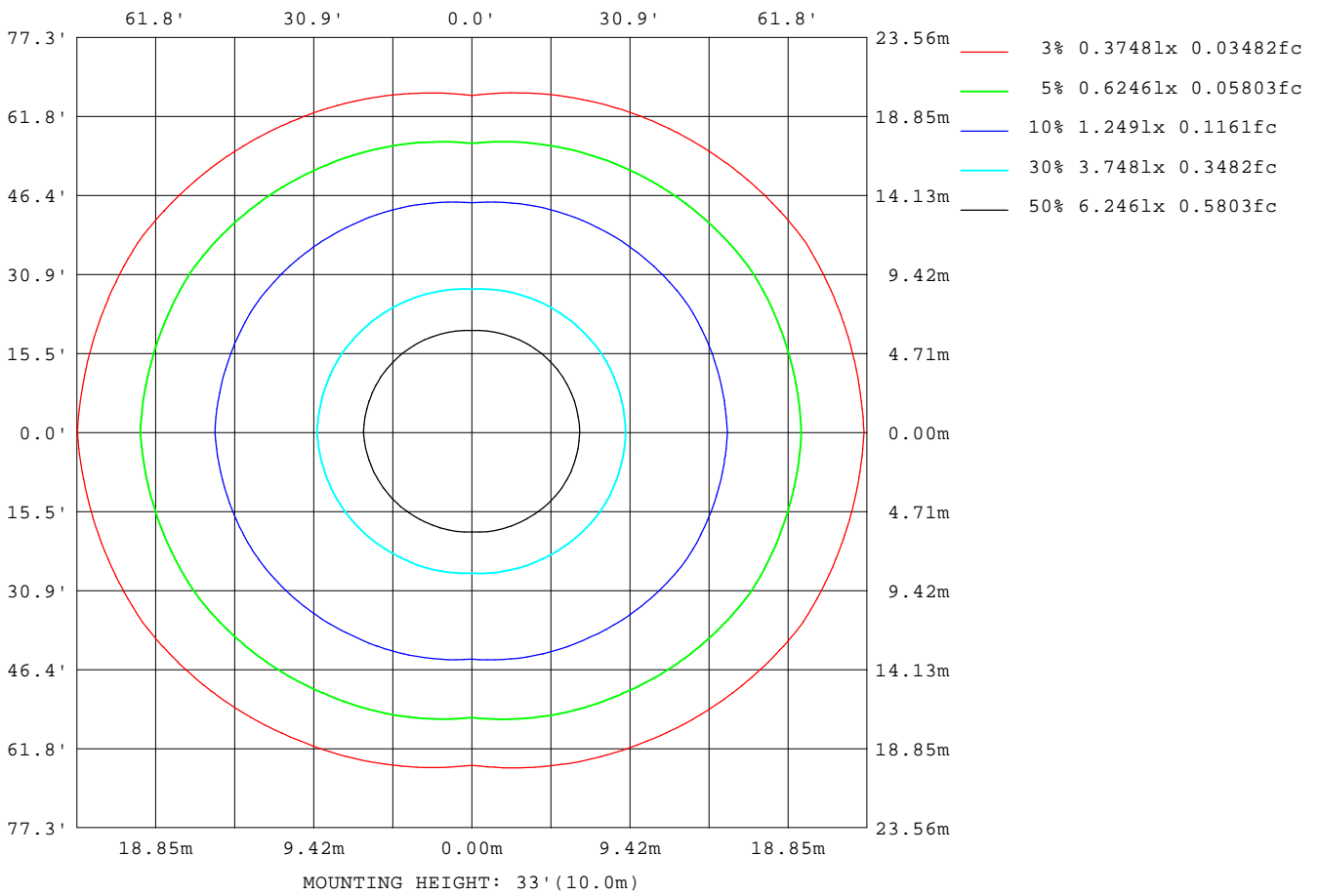
Note: The Curves indicate the illuminated area and the average illumination when the luminaire is at different distance.

C Range: 0 - 360DEG
C Interval: 30.0DEG
Test Speed: HIGH
Temperature: 25.3DEG
Operators: DAMIN
Test Date: 2022-05-09

γ Range: 0 - 180DEG
γ Interval: 1.0DEG
Test System: EVERFINE GO-2000A_V1 SYSTEM V2.00.443
Humidity: 65.0%
Test Distance: 8.000m [K=0.7063]
Remarks:

ISOLUX DIAGRAM

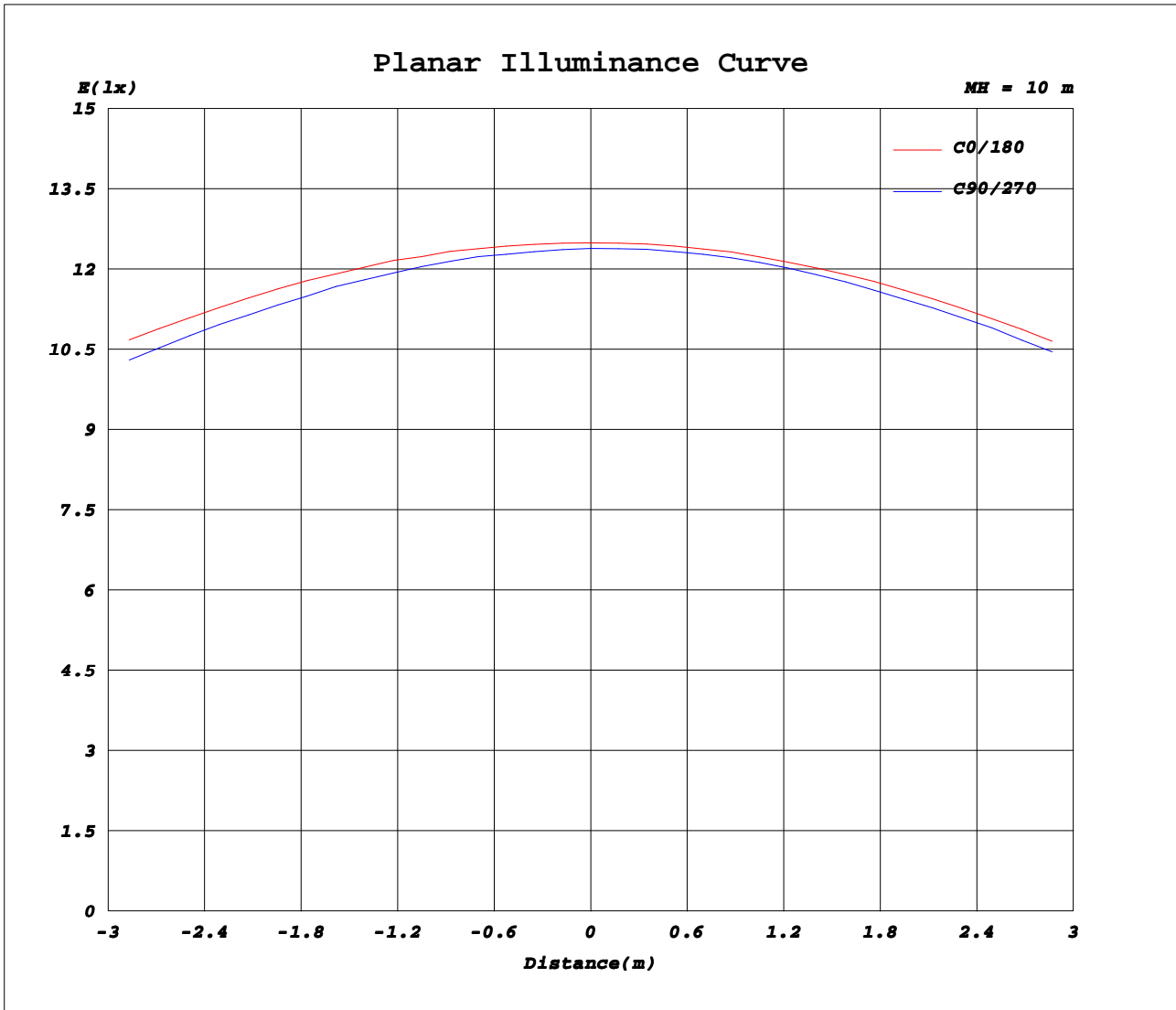
Test:U:221.80V I:0.1610A P:34.200W PF:0.9710 Freq:50.00Hz		
Lamp Flux:4735.31x1 lm		
Name: NS57-1500MM-35W	Type: LED	
MFR.: Lumega Group	DIM.: L1500*W32*H43mm	
	SUR.: 1490*32mm	



C Range: 0 - 360DEG
C Interval: 30.0DEG
Test Speed: HIGH
Temperature: 25.3DEG
Operators: DAMIN
Test Date: 2022-05-09

γ Range: 0 - 180DEG
γ Interval: 1.0DEG
Test System: EVERFINE GO-2000A_V1 SYSTEM V2.00.443
Humidity: 65.0%
Test Distance: 8.000m [K=0.7063]
Remarks:

Planar Illuminance Curve



C Range: 0 - 360DEG
C Interval: 30.0DEG
Test Speed: HIGH
Temperature: 25.3DEG
Operators: DAMIN
Test Date: 2022-05-09

γ Range: 0 - 180DEG
γ Interval: 1.0DEG
Test System: EVERFINE GO-2000A_V1 SYSTEM V2.00.443
Humidity: 65.0%
Test Distance: 8.000m [K=0.7063]
Remarks:

LUMINOUS DISTRIBUTION INTENSITY DATA

Test:U:221.80V I:0.1610A P:34.200W PF:0.9710 Freq:50.00Hz Lamp Flux:4735.31x1 lm		
Name: NS57-1500MM-35W	Type: LED	
MFR.: Lumega Group	DIM.: L1500*W32*H43mm	
	SUR.: 1490*32mm	

Table--1

UNIT: cd

C (DEG) \ γ (DEG)	0	30	60	90	120	150	180	210	240	270	300	330							
0	1249	1245	1240	1239	1234	1235	1249	1245	1240	1239	1234	1235							
5	1247	1239	1232	1229	1225	1227	1246	1239	1238	1235	1233	1232							
10	1234	1226	1211	1204	1202	1208	1232	1225	1220	1215	1218	1221							
15	1209	1198	1179	1168	1170	1180	1207	1200	1193	1185	1192	1197							
20	1173	1161	1137	1119	1126	1143	1171	1164	1153	1142	1152	1162							
25	1129	1114	1082	1061	1071	1098	1130	1118	1101	1083	1101	1118							
30	1079	1061	1019	991	1009	1045	1082	1070	1043	1019	1043	1069							
35	1024	1001	951	916	941	989	1030	1011	976	943	977	1010							
40	967	939	877	833	868	925	974	950	901	860	904	948							
45	904	873	798	745	790	862	916	886	826	772	828	882							
50	844	805	719	656	712	796	855	819	747	681	748	815							
55	778	735	639	564	632	727	788	750	663	587	664	746							
60	711	665	557	470	551	657	723	679	579	491	581	675							
65	643	594	476	377	470	586	653	605	494	395	497	604							
70	572	520	395	286	390	511	581	531	410	299	413	531							
75	499	448	318	197	312	439	507	456	330	204	333	458							
80	428	379	244	115	239	370	436	384	254	118	257	387							
85	366	316	182	47.5	178	310	372	322	190	47.2	193	323							
90	323	273	143	13.1	142	270	328	280	150	13.3	150	268							
95	295	249	128	12.6	126	246	300	256	133	13.5	112	234							
100	271	228	115	13.2	114	225	276	233	120	13.5	115	218							
105	248	208	98.9	13.9	103	206	252	213	109	14.0	108	207							
110	227	191	83.4	14.6	94.9	188	230	195	100	14.9	92.3	194							
115	207	174	70.8	15.3	87.2	172	210	178	92.8	15.8	81.8	178							
120	189	146	62.2	16.0	81.3	157	192	162	86.0	16.9	73.1	150							
125	172	111	55.6	16.8	75.6	143	174	148	79.8	17.9	66.3	126							
130	155	92.5	50.4	17.9	70.2	130	158	134	74.0	19.1	60.6	110							
135	139	84.0	46.3	19.4	65.1	117	143	122	68.6	20.4	55.5	98.3							
140	123	78.5	45.0	20.8	59.9	105	127	109	63.0	21.7	51.6	89.2							
145	109	67.9	44.0	22.2	53.8	93.5	112	97.0	56.9	23.1	48.6	77.8							
150	94.8	59.2	42.7	23.6	48.2	81.9	97.5	84.9	50.5	24.3	46.0	67.5							
155	73.6	50.7	40.8	24.9	43.6	70.3	83.3	73.1	45.5	25.4	43.0	56.9							
160	62.3	46.9	38.4	26.1	39.3	57.9	68.5	60.1	40.8	26.4	39.8	49.9							
165	43.9	42.8	35.8	27.1	35.5	47.4	49.8	49.1	36.6	27.3	36.6	43.9							
170	33.5	37.6	33.0	28.0	32.1	38.5	36.6	39.5	32.9	28.0	33.4	36.8							
175	29.8	32.2	30.5	28.7	29.6	31.5	29.8	32.1	30.1	28.5	30.7	32.0							
180	27.6	28.1	28.7	28.8	28.7	28.4	27.7	28.1	28.7	28.9	28.8	28.3							

C Range: 0 - 360DEG
C Interval: 30.0DEG
Test Speed: HIGH
Temperature: 25.3DEG
Operators: DAMIN
Test Date: 2022-05-09

γ Range: 0 - 180DEG
γ Interval: 1.0DEG
Test System: EVERFINE GO-2000A_V1 SYSTEM V2.00.443
Humidity: 65.0%
Test Distance: 8.000m [K=0.7063]
Remarks: