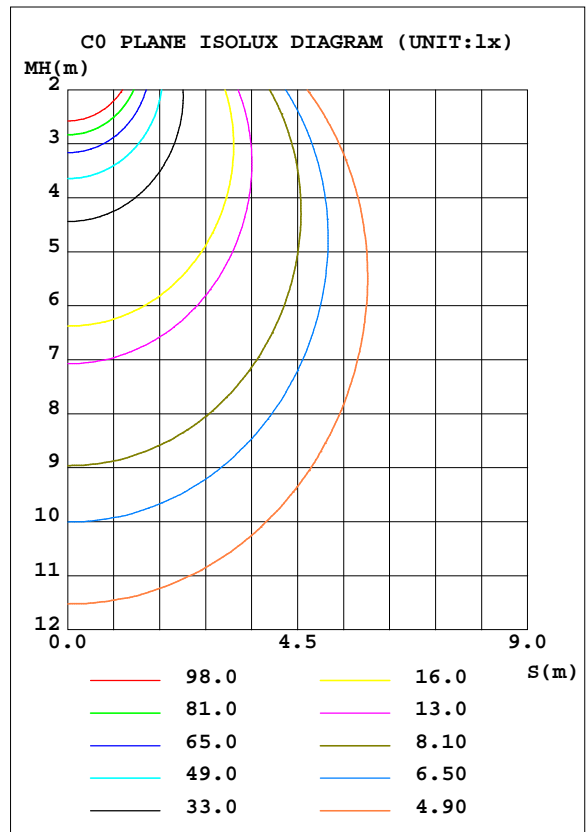
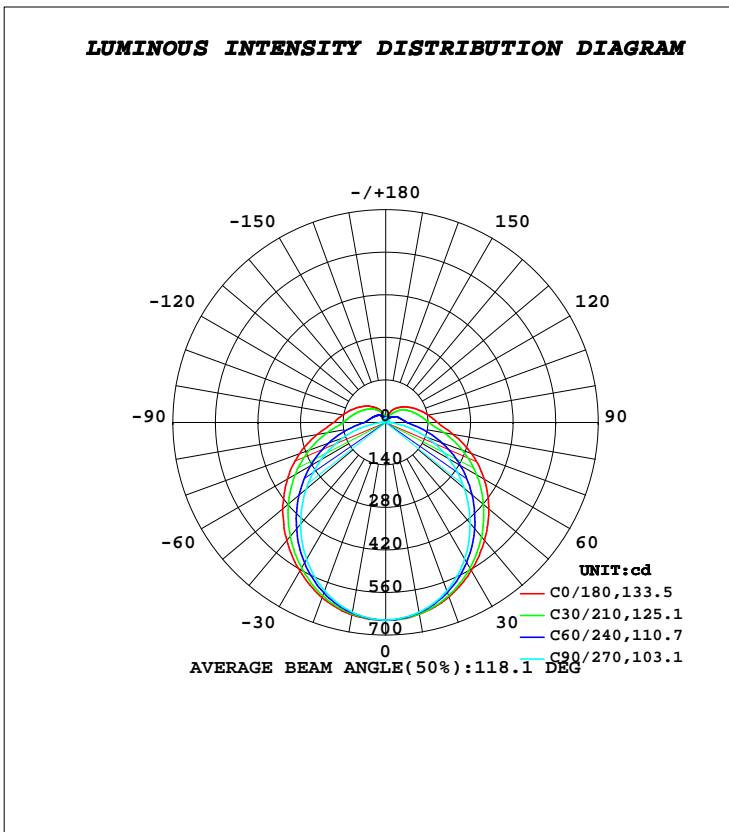


LUMINAIRE PHOTOMETRIC TEST REPORT

Test:U:221.80V I:0.0840A P:17.500W PF:0.9690 Freq:50.00Hz		
Lamp Flux:2465.68x1 lm		
Name: NS57-600MM-18W	Type: LED	
MFR.: Lumega Group	DIM.: L600*W32*H43mm	
	SUR.: 590*32mm	

DATA OF LAMP		PHOTOMETRIC DATA Eff: 140.90 lm/W			
MODEL		I _{max} (cd)	651.2	S/MH(C0/180)	1.29
NOMINAL POWER(W)	18	LOR(%)	100.0	S/MH(C90/270)	1.20
RATED VOLTAGE(V)	220	TOTAL FLUX(lm)	2465.7	η UP, DN(C0-180)	7.6,42.1
NOMINAL FLUX(lm)	2465.68	CIE CLASS	SEMI-D.	η UP, DN(C180-360)	7.7,42.5
LAMPS INSIDE	1	η up(%)	15.3	CIBSE SHR NOM	1.25
TEST VOLTAGE(V)	221	η down(%)	84.7	CIBSE SHR MAX	1.35



C Range: 0 - 360DEG
C Interval: 30.0DEG
Test Speed: HIGH
Temperature:25.3DEG
Operators:DAMIN
Test Date:2022-05-09

γ Range: 0 - 180DEG
γ Interval: 1.0DEG
Test System:EVERFINE GO-2000A_V1 SYSTEM V2.00.443
Humidity:65.0%
Test Distance:8.000m [K=0.7063]
Remarks:

ZONAL FLUX DIAGRAM

ZONAL FLUX DIAGRAM:

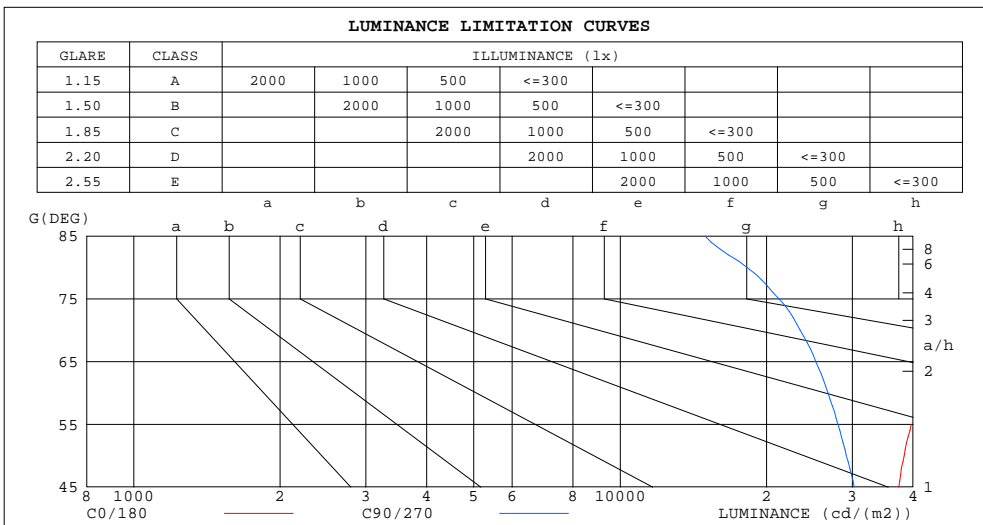
γ	C0	C45	C90	C135	C180	C225	C270	C315	γ	Φ zone	Φ total	%lum, lamp
10	640.8	638.2	634.6	636.9	642.7	638.2	634.3	637.3	0- 10	61.45	61.45	2.49,2.49
20	610.8	601.0	589.4	599.8	613.1	601.8	589.0	601.8	10- 20	175.5	237.0	9.61,9.61
30	562.9	543.6	519.4	543.3	564.9	543.9	520.6	547.3	20- 30	264.7	501.7	20.3,20.3
40	506.6	473.7	433.0	473.2	506.4	472.2	435.9	478.7	30- 40	319.0	820.7	33.3,33.3
50	443.6	395.9	337.4	396.3	442.5	395.8	341.9	405.3	40- 50	335.9	1157	46.9,46.9
60	374.7	315.2	240.7	317.5	373.8	315.1	245.7	326.6	50- 60	318.4	1475	59.8,59.8
70	300.5	233.8	144.4	238.1	302.3	235.2	150.3	247.5	60- 70	272.1	1747	70.9,70.9
80	225.0	156.7	56.98	163.2	229.0	159.0	61.89	171.3	70- 80	205.3	1952	79.2,79.2
90	170.6	106.1	8.683	111.7	171.2	104.8	9.794	107.0	80- 90	135.9	2088	84.7,84.7
100	142.4	86.94	7.141	93.13	144.1	86.84	7.240	93.64	90-100	101.4	2190	88.8,88.8
110	118.6	72.35	7.581	78.61	121.5	73.56	8.122	79.11	100-110	82.94	2272	92.2,92.2
120	98.36	59.88	8.694	66.57	101.7	62.79	9.216	66.31	110-120	65.83	2338	94.8,94.8
130	80.47	47.53	9.897	56.06	84.24	53.32	10.39	53.81	120-130	49.94	2388	96.9,96.9
140	64.38	32.82	11.08	46.43	68.12	44.47	11.49	40.58	130-140	35.25	2423	98.3,98.3
150	49.07	24.19	12.19	35.86	52.82	34.61	12.44	28.66	140-150	22.44	2446	99.2,99.2
160	30.64	18.37	13.40	25.72	37.29	25.58	13.26	20.44	150-160	12.61	2459	99.7,99.7
170	16.69	15.75	14.37	18.76	17.82	18.74	14.14	16.37	160-170	5.640	2464	99.9,99.9
180	14.68	14.79	14.70	14.64	14.69	14.78	14.68	14.65	170-180	1.520	2466	100,100
DEG	LUMINOUS INTENSITY:cd									UNIT:lm		

C Range: 0 - 360DEG
C Interval: 30.0DEG
Test Speed: HIGH
Temperature:25.3DEG
Operators:DAMIN
Test Date:2022-05-09

γ Range: 0 - 180DEG
 γ Interval: 1.0DEG
Test System:EVERFINE GO-2000A_V1 SYSTEM V2.00.443
Humidity:65.0%
Test Distance:8.000m [K=0.7063]
Remarks:

LUMINANCE LIMITATION CURVES

Test:U:221.80V I:0.0840A P:17.500W PF:0.9690 Freq:50.00Hz		
Lamp Flux:2465.68x1 lm		
Name: NS57-600MM-18W	Type: LED	
MFR.: Lumega Group	DIM.: L600*W32*H43mm	
	SUR.: 590*32mm	



LUMINANCE cd/(m2)		
G(DEG)	C0/180	C90/270
85	122537	14941
80	71993	18231
75	56301	21227
70	48812	23461
65	44507	25260
60	41629	26739
55	39692	28027
50	38341	29164
45	37387	30286

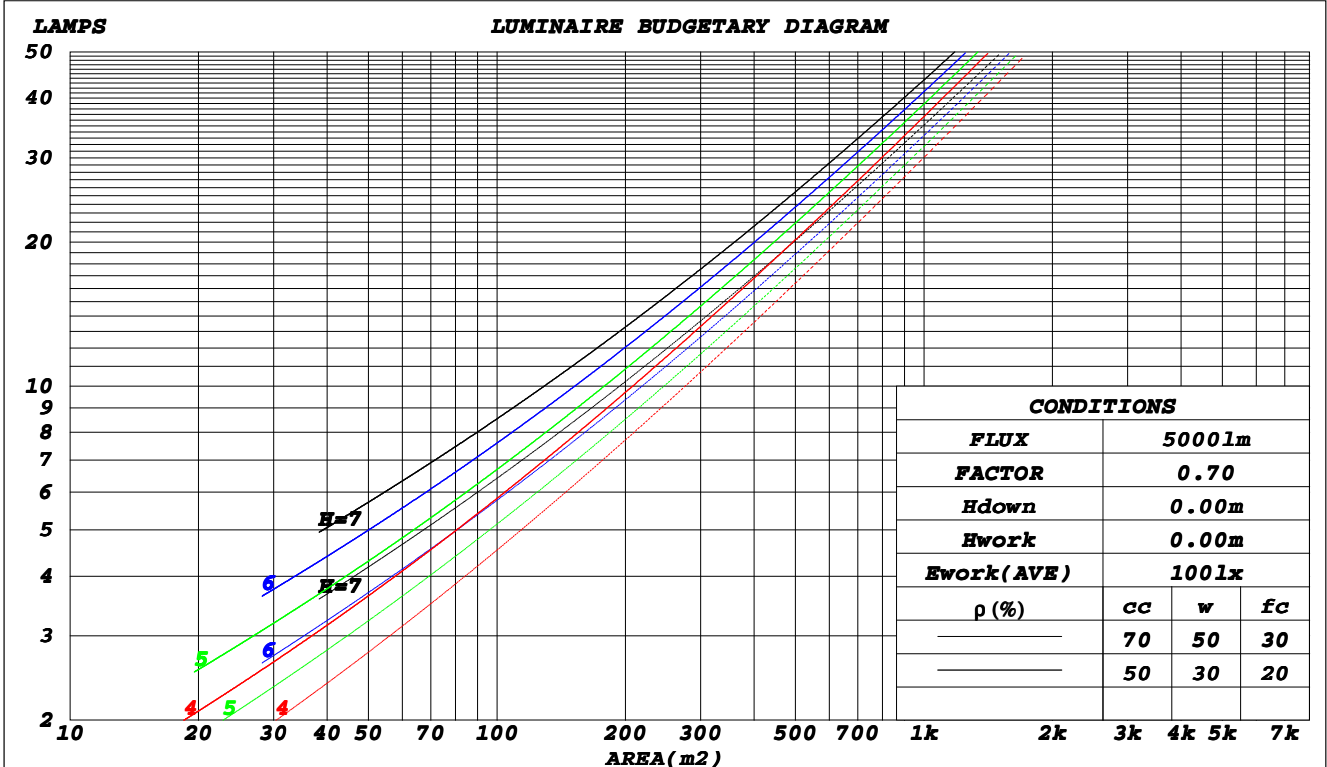
C Range: 0 - 360DEG
C Interval: 30.0DEG
Test Speed: HIGH
Temperature: 25.3DEG
Operators: DAMIN
Test Date: 2022-05-09

γ Range: 0 - 180DEG
γ Interval: 1.0DEG
Test System: EVERFINE GO-2000A_V1 SYSTEM V2.00.443
Humidity: 65.0%
Test Distance: 8.000m [K=0.7063]
Remarks:

CU AND LUMINAIRE BUDGETARY ESTIMATE DIAGRAM

Test:U:221.80V I:0.0840A P:17.500W PF:0.9690 Freq:50.00Hz		
Lamp Flux:2465.68x1 lm		
Name: NS57-600MM-18W	Type: LED	
MFR.: Lumega Group	DIM.: L600*W32*H43mm	
	SUR.: 590*32mm	

ρ_{cc}	80%			70%			50%			30%			10%			0
ρ_w	50%	30%	10%	50%	30%	10%	50%	30%	10%	50%	30%	10%	50%	30%	10%	0
ρ_{fc}	20%			20%			20%			20%			20%			0
RCR	RCR:Room Cavity Ratio						Coefficients of Utilization(CU)									
0.0	1.15	1.15	1.15	1.11	1.11	1.11	1.03	1.03	1.03	.95	.95	.95	.88	.88	.88	.85
1.0	.98	.93	.88	.94	.90	.85	.87	.83	.80	.80	.77	.75	.74	.72	.70	.67
2.0	.84	.77	.71	.81	.74	.69	.75	.69	.65	.69	.65	.61	.64	.61	.57	.54
3.0	.73	.65	.58	.71	.63	.56	.65	.59	.53	.61	.55	.51	.56	.52	.48	.45
4.0	.65	.56	.49	.62	.54	.47	.58	.51	.45	.54	.48	.43	.50	.45	.41	.38
5.0	.58	.48	.42	.56	.47	.41	.52	.44	.39	.48	.42	.37	.45	.39	.35	.33
6.0	.52	.43	.36	.50	.41	.35	.47	.39	.34	.43	.37	.32	.41	.35	.31	.28
7.0	.47	.38	.32	.45	.37	.31	.42	.35	.30	.40	.33	.28	.37	.31	.27	.25
8.0	.43	.34	.28	.41	.33	.28	.39	.32	.26	.36	.30	.25	.34	.28	.24	.22
9.0	.39	.31	.25	.38	.30	.25	.36	.29	.24	.33	.27	.23	.31	.26	.22	.20
10.0	.36	.28	.23	.35	.27	.22	.33	.26	.21	.31	.25	.21	.29	.24	.20	.18



C Range: 0 - 360DEG
 C Interval: 30.0DEG
 Test Speed: HIGH
 Temperature: 25.3DEG
 Operators: DAMIN
 Test Date: 2022-05-09

γ Range: 0 - 180DEG
 γ Interval: 1.0DEG
 Test System: EVERFINE GO-2000A_V1 SYSTEM V2.00.443
 Humidity: 65.0%
 Test Distance: 8.000m [K=0.7063]
 Remarks:

WEC AND CCEC

Test:U:221.80V I:0.0840A P:17.500W PF:0.9690 Freq:50.00Hz		
Lamp Flux:2465.68x1 lm		
Name: NS57-600MM-18W	Type: LED	
MFR.: Lumega Group	DIM.: L600*W32*H43mm	
	SUR.: 590*32mm	

ρ_{cc}	80%			70%			50%			30%			10%			0
ρ_w	50%	30%	10%	50%	30%	10%	50%	30%	10%	50%	30%	10%	50%	30%	10%	0
ρ_{fc}	20%			20%			20%			20%			20%			0
RCR	RCR:Room Cavity Ratio						Wall Exitance Coefficients(WEC)									
0.0																
1.0	.356	.202	.064	.344	.196	.062	.322	.185	.059	.302	.174	.056	.283	.164	.053	
2.0	.316	.173	.053	.305	.168	.052	.285	.158	.049	.267	.150	.047	.250	.141	.045	
3.0	.284	.151	.045	.274	.147	.044	.256	.139	.042	.240	.131	.040	.224	.124	.038	
4.0	.258	.134	.039	.249	.130	.039	.233	.123	.037	.218	.117	.035	.204	.111	.034	
5.0	.236	.120	.035	.228	.117	.034	.213	.111	.033	.199	.105	.031	.186	.100	.030	
6.0	.217	.109	.031	.210	.106	.030	.196	.101	.029	.184	.095	.028	.172	.090	.027	
7.0	.201	.099	.028	.194	.097	.028	.182	.092	.026	.170	.087	.025	.160	.083	.024	
8.0	.187	.091	.026	.181	.089	.025	.169	.085	.024	.159	.080	.023	.149	.076	.022	
9.0	.174	.084	.024	.169	.082	.023	.158	.078	.022	.149	.075	.021	.139	.071	.020	
10.0	.163	.078	.022	.158	.076	.021	.149	.073	.021	.140	.069	.020	.131	.066	.019	

ρ_{cc}	80%			70%			50%			30%			10%			0
ρ_w	50%	30%	10%	50%	30%	10%	50%	30%	10%	50%	30%	10%	50%	30%	10%	0
ρ_{fc}	20%			20%			20%			20%			20%			0
RCR	RCR:Room Cavity Ratio						Ceiling Cavity Exitance Coefficients(CCEC)									
0.0	.307	.307	.307	.263	.263	.263	.179	.179	.179	.103	.103	.103	.033	.033	.033	
1.0	.301	.273	.248	.258	.235	.214	.176	.161	.148	.101	.093	.086	.032	.030	.028	
2.0	.294	.250	.214	.252	.215	.185	.172	.149	.129	.099	.087	.075	.032	.028	.025	
3.0	.286	.233	.191	.245	.201	.166	.168	.140	.116	.097	.082	.069	.031	.027	.022	
4.0	.279	.221	.177	.239	.191	.153	.164	.133	.108	.095	.078	.064	.031	.025	.021	
5.0	.271	.211	.166	.233	.182	.145	.160	.127	.102	.093	.075	.061	.030	.024	.020	
6.0	.264	.203	.159	.227	.176	.139	.156	.123	.098	.091	.072	.058	.029	.024	.019	
7.0	.257	.196	.154	.221	.170	.134	.153	.119	.095	.089	.070	.056	.029	.023	.019	
8.0	.250	.190	.149	.215	.165	.130	.149	.116	.092	.087	.068	.055	.028	.022	.018	
9.0	.244	.186	.146	.210	.161	.128	.146	.113	.091	.085	.067	.054	.027	.022	.018	
10.0	.238	.182	.144	.205	.158	.125	.143	.111	.089	.083	.066	.053	.027	.022	.018	

C Range: 0 - 360DEG
C Interval: 30.0DEG
Test Speed: HIGH
Temperature:25.3DEG
Operators:DAMIN
Test Date:2022-05-09

γ Range: 0 - 180DEG
 γ Interval: 1.0DEG
Test System:EVERFINE GO-2000A_V1 SYSTEM V2.00.443
Humidity:65.0%
Test Distance:8.000m [K=0.7063]
Remarks:

UGR(Unified Glare Rating) Table

Test:U:221.80V I:0.0840A P:17.500W PF:0.9690 Freq:50.00Hz		
Lamp Flux:2465.68x1 lm		
Name: NS57-600MM-18W	Type: LED	
MFR.: Lumega Group	DIM.: L600*W32*H43mm	
	SUR.: 590*32mm	

ceiling/cavity	0.7	0.7	0.5	0.5	0.3	0.7	0.7	0.5	0.5	0.3
walls	0.5	0.3	0.5	0.3	0.3	0.5	0.3	0.5	0.3	0.3
working plane	0.2	0.2	0.2	0.2	0.2	0.2	0.2	0.2	0.2	0.2
Room dimensions	Viewed crosswise					Viewed endwise				
x = 2H y = 2H	24.9	26.3	25.4	26.8	27.3	23.3	24.6	23.7	25.1	25.6
3H	27.2	28.5	27.7	29.0	29.5	24.7	25.9	25.2	26.4	27.0
4H	28.5	29.7	29.0	30.2	30.7	25.2	26.4	25.8	26.9	27.5
6H	29.8	30.9	30.3	31.4	32.0	25.6	26.7	26.2	27.3	27.9
8H	30.5	31.5	31.0	32.1	32.7	25.7	26.8	26.3	27.3	28.0
12H	31.3	32.3	31.8	32.9	33.5	25.8	26.8	26.3	27.4	28.0
4H 2H	25.5	26.7	26.0	27.2	27.7	24.2	25.4	24.7	25.9	26.5
3H	28.0	29.0	28.6	29.6	30.2	25.8	26.9	26.4	27.4	28.1
4H	29.4	30.3	30.0	30.9	31.6	26.6	27.5	27.2	28.1	28.8
6H	30.9	31.7	31.5	32.3	33.0	27.1	28.0	27.7	28.6	29.3
8H	31.7	32.5	32.3	33.1	33.8	27.3	28.1	27.9	28.7	29.4
12H	32.7	33.4	33.3	34.0	34.8	27.4	28.2	28.1	28.8	29.5
8H 4H	29.7	30.5	30.3	31.1	31.8	27.3	28.1	28.0	28.7	29.5
6H	31.4	32.1	32.1	32.8	33.5	28.2	28.8	28.8	29.5	30.2
8H	32.5	33.1	33.1	33.7	34.5	28.5	29.1	29.2	29.8	30.6
12H	33.7	34.2	34.4	34.9	35.7	28.8	29.3	29.5	30.0	30.8
12H 4H	29.7	30.4	30.3	31.0	31.8	27.6	28.3	28.2	28.9	29.6
6H	31.5	32.1	32.2	32.8	33.6	28.6	29.2	29.2	29.8	30.6
8H	32.7	33.2	33.4	33.9	34.7	29.1	29.6	29.8	30.3	31.1
Variations with the observer position at spacings(CIE Pub.117):										
S = 1.0H	+ 0.1 / - 0.1					+ 0.1 / - 0.2				
1.5H	+ 0.2 / - 0.2					+ 0.2 / - 0.3				
2.0H	+ 0.2 / - 0.3					+ 0.2 / - 0.4				

CIE Pub.117, 2466 lm Total Lamp Luminous Flux Corrected (8log(F/F0) = 3.1)
 Area: 0.018 m2

C Range: 0 - 360DEG
C Interval: 30.0DEG
Test Speed: HIGH
Temperature:25.3DEG
Operators:DAMIN
Test Date:2022-05-09

γ Range: 0 - 180DEG
γ Interval: 1.0DEG
Test System:EVERFINE GO-2000A_V1 SYSTEM V2.00.443
Humidity:65.0%
Test Distance:8.000m [K=0.7063]
Remarks:

UTILIZATION FACTORS TABLE

Test:U:221.80V I:0.0840A P:17.500W PF:0.9690 Freq:50.00Hz Lamp Flux:2465.68x1 lm		
Name: NS57-600MM-18W	Type: LED	
MFR.: Lumega Group	DIM.: L600*W32*H43mm	
	SUR.: 590*32mm	

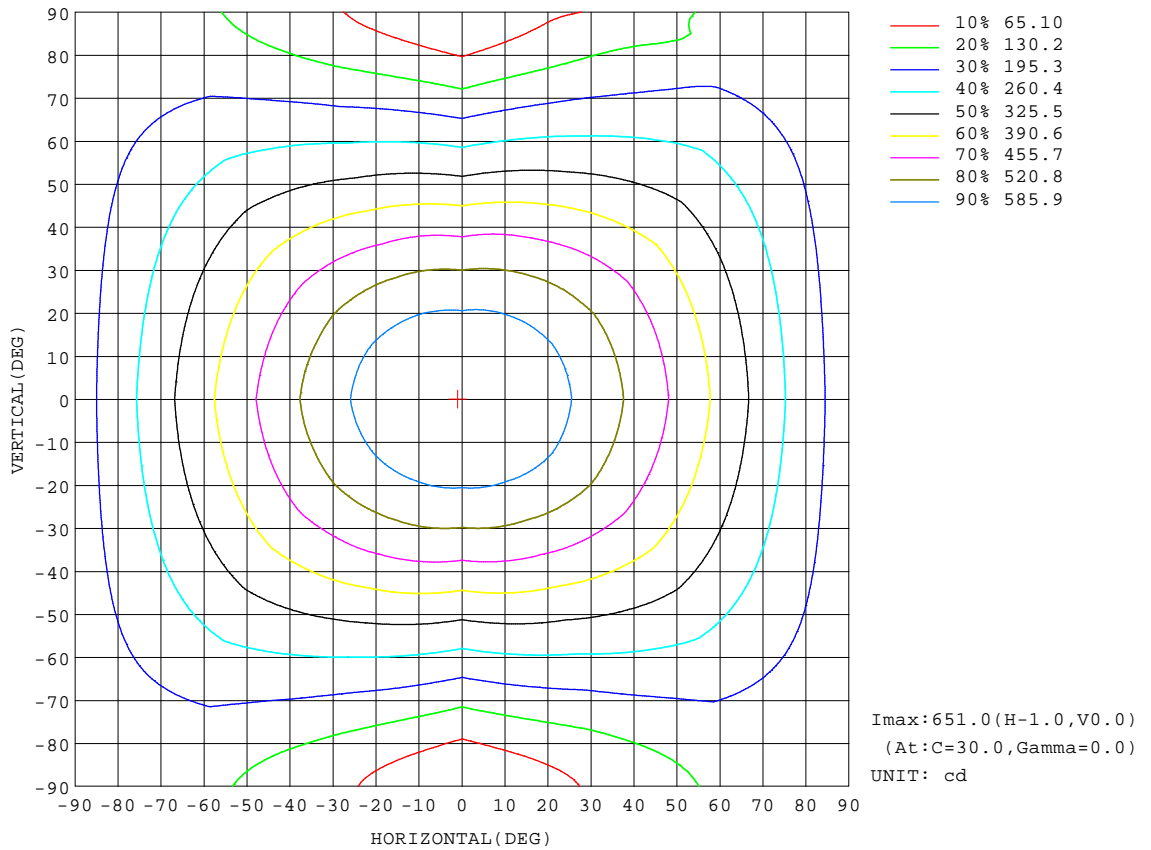
REFLECTANCE										
Ceiling	0.8	0.8	0.8	0.7	0.7	0.7	0.5	0.5	0.5	0
Walls	0.7	0.5	0.3	0.7	0.5	0.3	0.7	0.5	0.3	0
Working plane	0.2	0.2	0.2	0.2	0.2	0.2	0.2	0.2	0.2	0
ROOM INDEX	UTILIZATION FACTORS(PERCENT) $k(RI) \times RCR = 5$									
k = 0.60	51	38	31	49	38	31	48	37	31	24
0.80	60	47	40	58	47	39	56	45	38	31
1.00	68	55	47	66	54	47	63	55	46	37
1.25	75	63	55	72	61	54	68	59	52	43
1.50	80	68	60	77	67	59	73	64	57	47
2.00	87	77	69	84	75	67	79	71	65	54
2.50	91	82	74	88	79	73	82	75	69	58
3.00	95	86	79	91	84	77	85	79	74	61
4.00	99	92	86	96	89	84	89	84	79	66
5.00	102	96	90	98	93	88	91	87	83	69
ROOM INDEX	UF(total)									Direct
According to DIN EN 13032-2 2004			Suspended					SHRNOM = 1.25		

C Range: 0 - 360DEG
C Interval: 30.0DEG
Test Speed: HIGH
Temperature:25.3DEG
Operators:DAMIN
Test Date:2022-05-09

γ Range: 0 - 180DEG
 γ Interval: 1.0DEG
Test System:EVERFINE GO-2000A_V1 SYSTEM V2.00.443
Humidity:65.0%
Test Distance:8.000m [K=0.7063]
Remarks:

ISOCANDELA DIAGRAM

Test:U:221.80V I:0.0840A P:17.500W PF:0.9690 Freq:50.00Hz		
Lamp Flux:2465.68x1 lm		
Name: NS57-600MM-18W	Type: LED	
MFR.: Lumega Group	DIM.: L600*W32*H43mm	
	SUR.: 590*32mm	



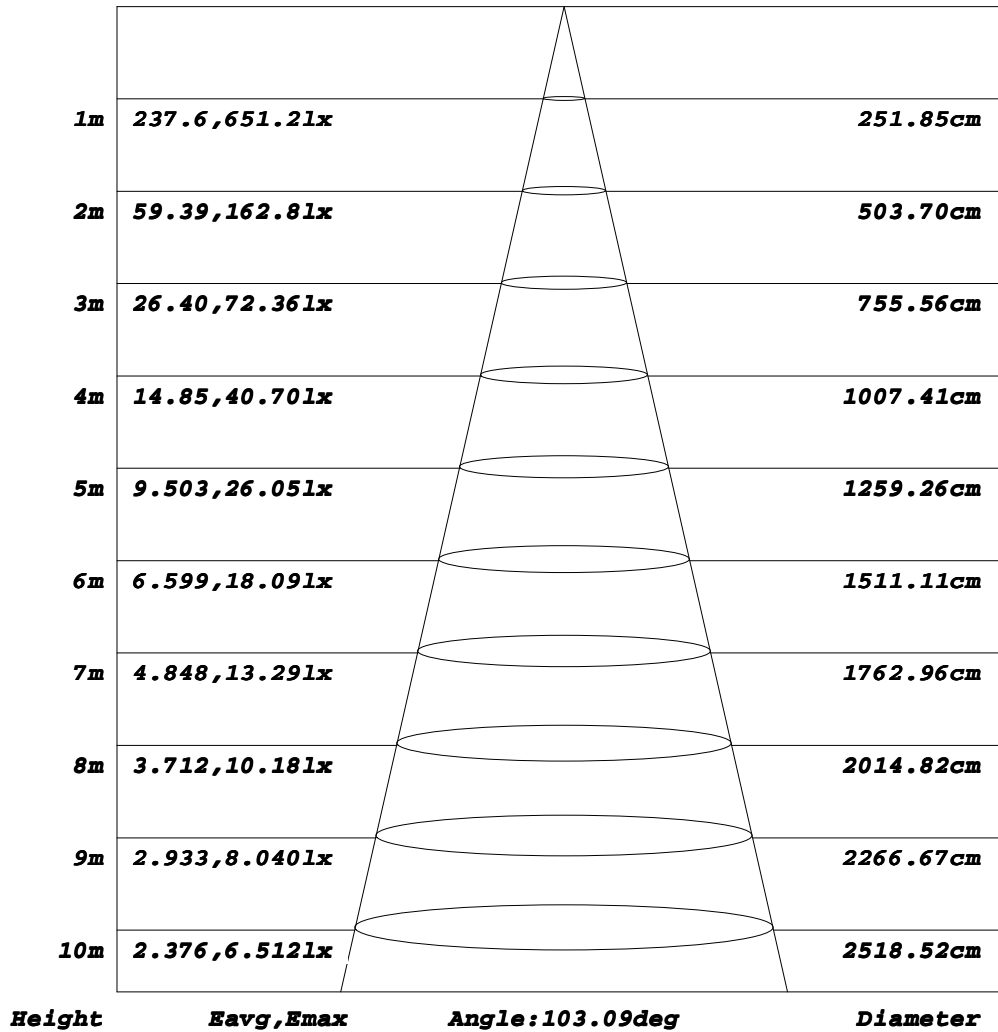
C Range: 0 - 360DEG
C Interval: 30.0DEG
Test Speed: HIGH
Temperature: 25.3DEG
Operators: DAMIN
Test Date: 2022-05-09

γ Range: 0 - 180DEG
γ Interval: 1.0DEG
Test System: EVERFINE GO-2000A_V1 SYSTEM V2.00.443
Humidity: 65.0%
Test Distance: 8.000m [K=0.7063]
Remarks:

AAI Figure

Test:U:221.80V I:0.0840A P:17.500W PF:0.9690 Freq:50.00Hz		
Lamp Flux:2465.68x1 lm		
Name: NS57-600MM-18W	Type: LED	
MFR.: Lumega Group	DIM.: L600*W32*H43mm	
	SUR.: 590*32mm	

Flux out:1223 lm



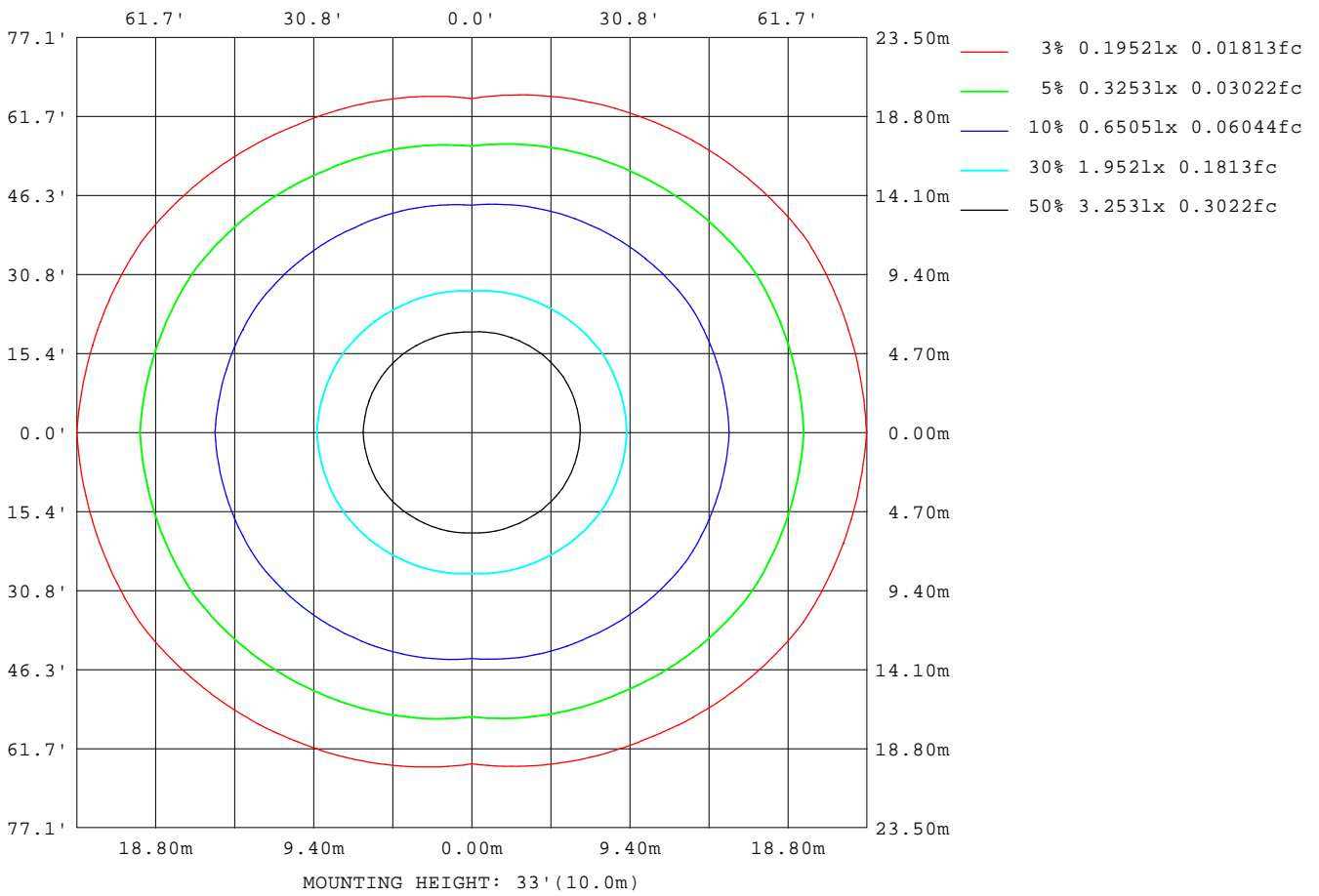
Note: The Curves indicate the illuminated area and the average illumination when the luminaire is at different distance.

C Range: 0 - 360DEG
C Interval: 30.0DEG
Test Speed: HIGH
Temperature: 25.3DEG
Operators: DAMIN
Test Date: 2022-05-09

γ Range: 0 - 180DEG
γ Interval: 1.0DEG
Test System: EVERFINE GO-2000A_V1 SYSTEM V2.00.443
Humidity: 65.0%
Test Distance: 8.000m [K=0.7063]
Remarks:

ISOLUX DIAGRAM

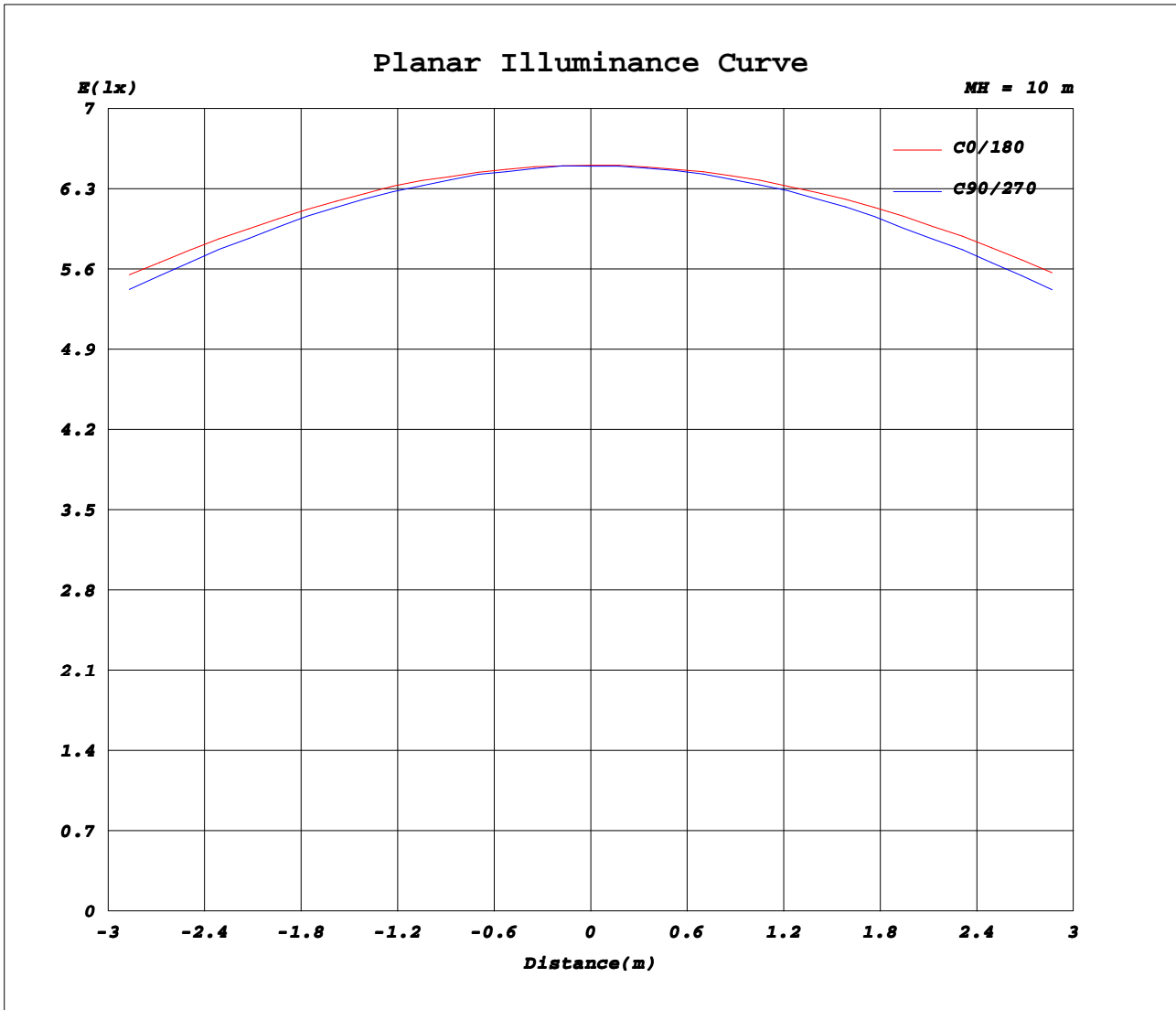
Test:U:221.80V I:0.0840A P:17.500W PF:0.9690 Freq:50.00Hz		
Lamp Flux:2465.68x1 lm		
Name: NS57-600MM-18W	Type: LED	
MFR.: Lumega Group	DIM.: L600*W32*H43mm	
	SUR.: 590*32mm	



C Range: 0 - 360DEG
C Interval: 30.0DEG
Test Speed: HIGH
Temperature: 25.3DEG
Operators: DAMIN
Test Date: 2022-05-09

γ Range: 0 - 180DEG
γ Interval: 1.0DEG
Test System: EVERFINE GO-2000A_V1 SYSTEM V2.00.443
Humidity: 65.0%
Test Distance: 8.000m [K=0.7063]
Remarks:

Planar Illuminance Curve



C Range: 0 - 360DEG
C Interval: 30.0DEG
Test Speed: HIGH
Temperature: 25.3DEG
Operators: DAMIN
Test Date: 2022-05-09

γ Range: 0 - 180DEG
γ Interval: 1.0DEG
Test System: EVERFINE GO-2000A_V1 SYSTEM V2.00.443
Humidity: 65.0%
Test Distance: 8.000m [K=0.7063]
Remarks:

LUMINOUS DISTRIBUTION INTENSITY DATA

Test:U:221.80V I:0.0840A P:17.500W PF:0.9690 Freq:50.00Hz Lamp Flux:2465.68x1 lm		
Name: NS57-600MM-18W	Type: LED	
MFR.: Lumega Group	DIM.: L600*W32*H43mm	
	SUR.: 590*32mm	

Table--1

UNIT: cd

C(DEG) γ (DEG)	0	30	60	90	120	150	180	210	240	270	300	330							
0	651	651	650	650	649	648	651	651	650	650	649	648							
5	648	648	646	645	645	646	649	648	647	646	646	646							
10	641	640	636	635	635	639	643	640	637	634	636	638							
15	628	626	619	615	619	624	630	627	620	615	620	624							
20	611	607	595	589	594	605	613	607	597	589	597	606							
25	588	582	566	557	566	581	590	583	567	558	570	583							
30	563	555	533	519	533	554	565	553	534	521	538	557							
35	536	524	496	478	496	522	536	523	497	480	502	526							
40	507	491	456	433	457	489	506	489	456	436	462	495							
45	476	456	414	385	415	454	474	453	415	390	423	462							
50	444	420	371	337	374	419	443	418	373	342	383	428							
55	410	384	328	289	331	382	408	381	329	294	340	392							
60	375	346	284	241	289	346	374	344	286	246	298	355							
65	339	308	241	192	247	309	339	306	243	198	256	318							
70	301	269	198	144	204	272	302	269	201	150	215	280							
75	262	231	157	98.9	165	234	265	231	161	104	175	242							
80	225	195	119	57.0	128	199	229	195	123	61.9	137	205							
85	192	162	88.2	23.4	97.1	166	195	162	91.1	27.3	105	150							
90	171	142	70.5	8.68	78.8	145	171	140	70.0	9.79	69.4	145							
95	156	129	62.5	7.91	70.7	132	157	128	62.1	8.11	69.4	133							
100	142	118	56.2	7.14	64.5	122	144	117	56.4	7.24	65.6	122							
105	130	107	51.1	7.28	59.1	112	132	108	51.7	7.91	60.3	112							
110	119	97.9	46.8	7.58	54.6	103	122	99.1	48.0	8.12	55.5	103							
115	108	89.3	43.2	8.12	50.6	93.8	111	91.1	44.9	8.63	51.2	94.1							
120	98.4	81.4	38.4	8.69	47.1	86.0	102	83.5	42.1	9.22	46.8	85.8							
125	89.3	74.1	32.6	9.28	43.8	78.6	92.8	76.4	39.4	9.80	41.8	78.3							
130	80.5	66.6	28.5	9.90	40.6	71.5	84.2	69.7	36.9	10.4	36.6	71.1							
135	72.3	52.9	25.2	10.5	37.7	64.7	76.1	63.2	34.6	11.0	32.3	63.5							
140	64.4	43.9	21.7	11.1	34.7	58.1	68.1	57.0	32.0	11.5	28.4	52.7							
145	56.7	36.3	19.4	11.6	30.8	51.7	60.4	50.9	27.8	12.0	24.1	43.6							
150	49.1	30.4	18.0	12.2	26.1	45.6	52.8	44.8	24.4	12.4	21.5	35.9							
155	39.9	24.5	16.8	12.7	23.4	39.3	45.5	38.8	22.3	12.9	19.6	29.2							
160	30.6	20.5	16.2	13.4	21.1	30.4	37.3	30.8	20.3	13.3	17.9	23.0							
165	19.0	18.0	15.8	13.9	18.8	24.9	28.6	25.2	18.5	13.8	16.5	19.9							
170	16.7	16.2	15.3	14.4	17.1	20.4	17.8	20.6	16.9	14.1	15.6	17.1							
175	15.2	15.2	14.7	14.7	15.8	16.9	15.9	17.1	15.7	14.5	14.9	15.2							
180	14.7	14.8	14.8	14.7	14.7	14.6	14.7	14.8	14.8	14.7	14.7	14.6							

C Range: 0 - 360DEG
C Interval: 30.0DEG
Test Speed: HIGH
Temperature: 25.3DEG
Operators: DAMIN
Test Date: 2022-05-09

γ Range: 0 - 180DEG
γ Interval: 1.0DEG
Test System: EVERFINE GO-2000A_V1 SYSTEM V2.00.443
Humidity: 65.0%
Test Distance: 8.000m [K=0.7063]
Remarks: