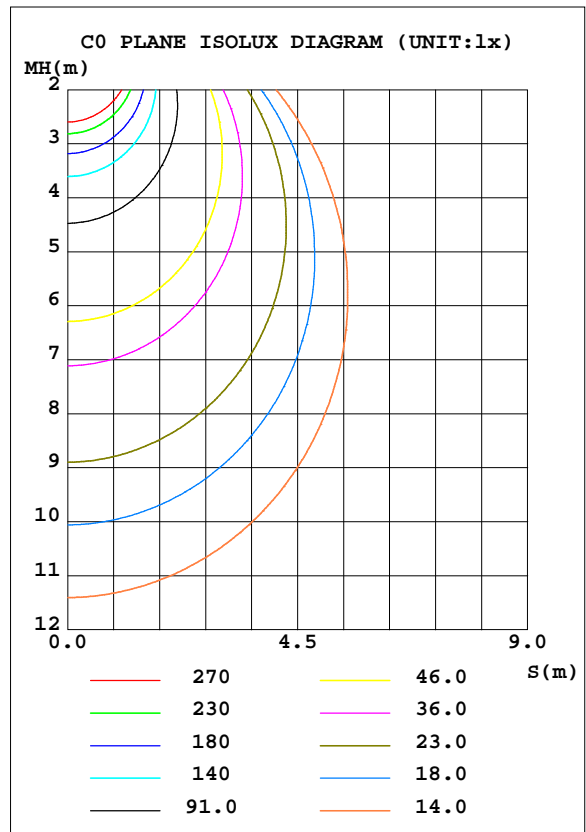
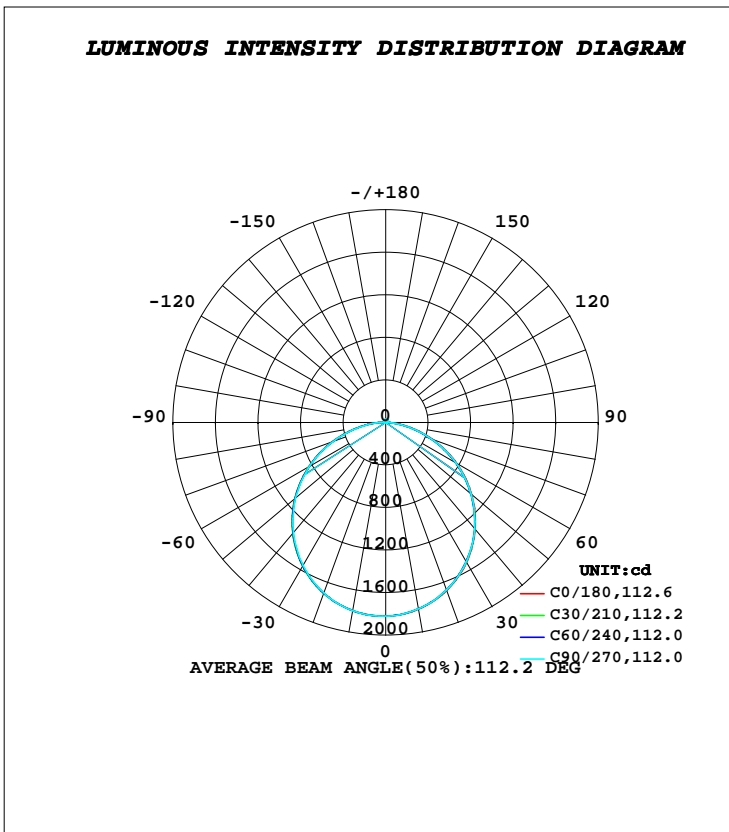


LUMINAIRE PHOTOMETRIC TEST REPORT

Test:U:220.60V I:0.1890A P:40.000W PF:0.9590 Freq:50.00Hz		
Lamp Flux:5333.44x1 lm		
Name: NS61-595X595-40W (Sensor)	Type: LED	
MFR.: Lumega Group	DIM.: 595*595mm	
	SUR.: 530*530mm	

DATA OF LAMP		PHOTOMETRIC DATA Eff: 133.34 lm/W			
MODEL		I _{max} (cd)	1822	S/MH(C0/180)	1.24
NOMINAL POWER(W)	40	LOR(%)	100.0	S/MH(C90/270)	1.24
RATED VOLTAGE(V)	220	TOTAL FLUX(lm)	5333.4	η UP, DN(C0-180)	1.1,47.7
NOMINAL FLUX(lm)	5333.44	CIE CLASS	DIRECT	η UP, DN(C180-360)	1.2,50.1
LAMPS INSIDE	1	η up(%)	2.2	CIBSE SHR NOM	1.25
TEST VOLTAGE(V)	220	η down(%)	97.8	CIBSE SHR MAX	1.35



C Range: 0 - 360DEG
C Interval: 30.0DEG
Test Speed: HIGH
Temperature:25.3DEG
Operators:DAMIN
Test Date:2022-04-23

γ Range: 0 - 180DEG
γ Interval: 1.0DEG
Test System:EVERFINE GO-2000A_V1 SYSTEM V2.00.443
Humidity:65.0%
Test Distance:8.000m [K=0.7063]
Remarks:

ZONAL FLUX DIAGRAM

ZONAL FLUX DIAGRAM:

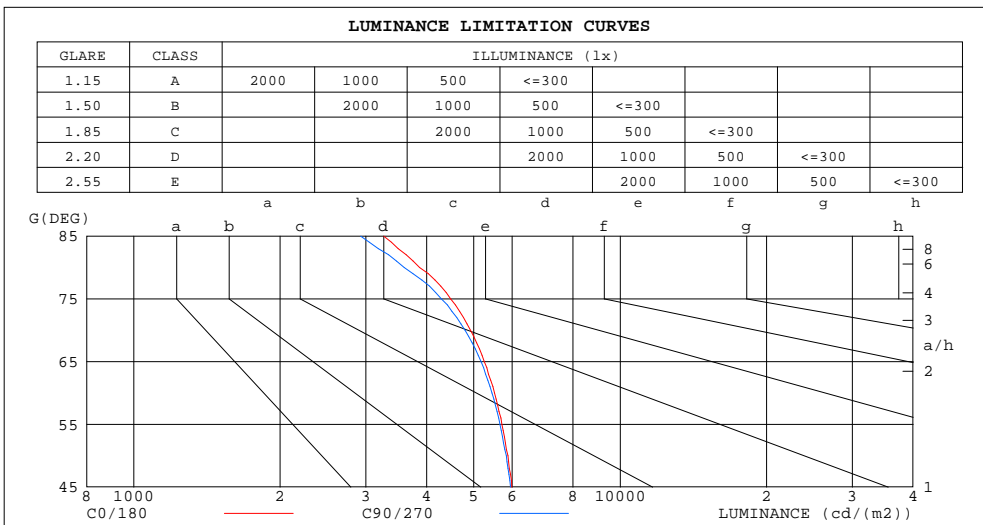
γ	C0	C45	C90	C135	C180	C225	C270	C315	γ	Φ zone	Φ total	%lum, lamp
10	1782	1780	1780	1787	1796	1797	1797	1791	0- 10	172.3	172.3	3.23,3.23
20	1681	1675	1676	1689	1706	1709	1706	1697	10- 20	493.4	665.7	12.5,12.5
30	1521	1514	1514	1534	1560	1560	1554	1543	20- 30	747.4	1413	26.5,26.5
40	1309	1304	1302	1328	1359	1358	1350	1336	30- 40	900.7	2314	43.4,43.4
50	1058	1047	1050	1077	1118	1114	1109	1087	40- 50	933.7	3248	60.9,60.9
60	772.0	759.3	762.9	791.6	835.3	831.9	827.5	803.8	50- 60	842.4	4090	76.7,76.7
70	471.8	455.4	459.5	489.3	535.7	531.6	527.8	503.3	60- 70	640.9	4731	88.7,88.7
80	188.3	177.6	174.9	204.6	246.7	245.0	236.5	220.3	70- 80	368.7	5100	95.6,95.6
90	10.14	10.60	10.11	13.72	31.62	35.07	33.04	24.50	80- 90	114.2	5214	97.8,97.8
100	12.69	12.62	12.45	12.81	15.29	15.16	15.01	15.05	90-100	14.77	5229	98,98
110	15.04	15.03	15.06	15.18	17.53	17.50	17.43	17.37	100-110	15.96	5245	98.3,98.3
120	17.20	17.26	17.33	17.45	19.65	19.62	19.56	19.42	110-120	17.21	5262	98.7,98.7
130	19.46	19.50	19.63	19.70	21.73	21.66	21.60	21.38	120-130	17.48	5279	99,99
140	21.67	21.76	21.88	21.97	23.72	23.65	23.54	23.35	130-140	16.73	5296	99.3,99.3
150	24.17	24.23	24.39	24.34	25.55	25.62	25.45	25.38	140-150	14.91	5311	99.6,99.6
160	26.60	26.56	26.82	26.58	27.49	27.44	27.48	27.25	150-160	12.00	5323	99.8,99.8
170	27.89	28.02	28.16	28.01	28.50	28.53	28.58	28.45	160-170	7.840	5331	99.9,99.9
180	28.54	28.69	28.73	28.62	28.54	28.68	28.72	28.63	170-180	2.716	5333	100,100
DEG	LUMINOUS INTENSITY:cd									UNIT:lm		

C Range: 0 - 360DEG
C Interval: 30.0DEG
Test Speed: HIGH
Temperature:25.3DEG
Operators:DAMIN
Test Date:2022-04-23

γ Range: 0 - 180DEG
 γ Interval: 1.0DEG
Test System:EVERFINE GO-2000A_V1 SYSTEM V2.00.443
Humidity:65.0%
Test Distance:8.000m [K=0.7063]
Remarks:

LUMINANCE LIMITATION CURVES

Test:U:220.60V I:0.1890A P:40.000W PF:0.9590 Freq:50.00Hz		
Lamp Flux:5333.44x1 lm		
Name: NS61-595X595-40W (Sensor)	Type: LED	
MFR.: Lumega Group	DIM.: 595*595mm	
	SUR.: 530*530mm	



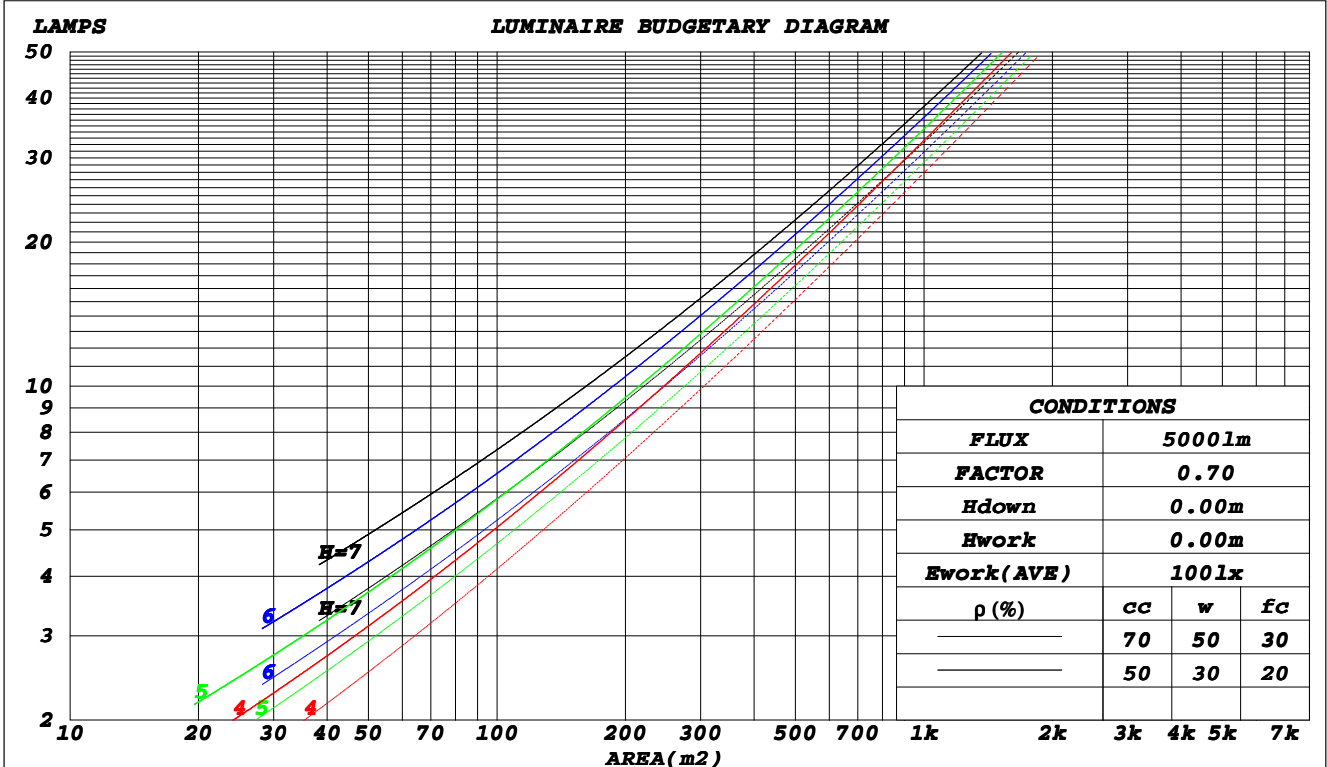
C Range: 0 - 360DEG
C Interval: 30.0DEG
Test Speed: HIGH
Temperature: 25.3DEG
Operators: DAMIN
Test Date: 2022-04-23

γ Range: 0 - 180DEG
γ Interval: 1.0DEG
Test System: EVERFINE GO-2000A_V1 SYSTEM V2.00.443
Humidity: 65.0%
Test Distance: 8.000m [K=0.7063]
Remarks:

CU AND LUMINAIRE BUDGETARY ESTIMATE DIAGRAM

Test:U:220.60V I:0.1890A P:40.000W PF:0.9590 Freq:50.00Hz		
Lamp Flux:5333.44x1 lm		
Name: NS61-595X595-40W (Sensor)	Type: LED	
MFR.: Lumega Group	DIM.: 595*595mm	
	SUR.: 530*530mm	

ρ_{cc}	80%			70%			50%			30%			10%			0	
ρ_w	50%	30%	10%	50%	30%	10%	50%	30%	10%	50%	30%	10%	50%	30%	10%	0	
ρ_{fc}	20%			20%			20%			20%			20%			0	
RCR	RCR:Room Cavity Ratio						Coefficients of Utilization(CU)										
0.0	1.19	1.19	1.19	1.15	1.15	1.15	1.10	1.10	1.10	1.05	1.05	1.05	.00	.00	.00	.98	
1.0	1.03	.99	.95	1.01	.97	.93	.96	.93	.90	.92	.89	.87	.88	.86	.84	.81	
2.0	.90	.83	.77	.88	.81	.76	.84	.79	.74	.80	.76	.72	.77	.73	.70	.68	
3.0	.79	.71	.64	.77	.69	.63	.74	.67	.62	.71	.65	.61	.68	.63	.59	.57	
4.0	.70	.61	.54	.68	.60	.54	.65	.58	.53	.63	.57	.52	.60	.55	.51	.49	
5.0	.62	.53	.47	.61	.53	.46	.59	.51	.45	.56	.50	.45	.54	.49	.44	.42	
6.0	.56	.47	.41	.55	.46	.40	.53	.45	.40	.51	.44	.39	.49	.43	.39	.37	
7.0	.51	.42	.36	.50	.42	.36	.48	.41	.35	.46	.40	.35	.45	.39	.34	.32	
8.0	.46	.38	.32	.46	.37	.32	.44	.37	.31	.43	.36	.31	.41	.35	.31	.29	
9.0	.42	.34	.29	.42	.34	.29	.40	.33	.28	.39	.33	.28	.38	.32	.28	.26	
10.0	.39	.31	.26	.39	.31	.26	.37	.30	.26	.36	.30	.25	.35	.29	.25	.23	



C Range: 0 - 360DEG
 C Interval: 30.0DEG
 Test Speed: HIGH
 Temperature: 25.3DEG
 Operators: DAMIN
 Test Date: 2022-04-23

γ Range: 0 - 180DEG
 γ Interval: 1.0DEG
 Test System: EVERFINE GO-2000A_V1 SYSTEM V2.00.443
 Humidity: 65.0%
 Test Distance: 8.000m [K=0.7063]
 Remarks:

WEC AND CCEC

Test:U:220.60V I:0.1890A P:40.000W PF:0.9590 Freq:50.00Hz		
Lamp Flux:5333.44x1 lm		
Name: NS61-595X595-40W (Sensor)	Type: LED	
MFR.: Lumega Group	DIM.: 595*595mm	
	SUR.: 530*530mm	

ρ_{cc}	80%			70%			50%			30%			10%			0
ρ_w	50%	30%	10%	50%	30%	10%	50%	30%	10%	50%	30%	10%	50%	30%	10%	0
ρ_{fc}	20%			20%			20%			20%			20%			0
RCR	RCR:Room Cavity Ratio						Wall Exitance Coefficients(WEC)									
0.0																
1.0	.312	.177	.056	.304	.174	.055	.290	.166	.053	.276	.159	.051	.264	.153	.049	
2.0	.292	.160	.049	.285	.157	.048	.273	.152	.047	.261	.146	.046	.250	.141	.045	
3.0	.270	.144	.043	.264	.141	.043	.252	.137	.042	.242	.133	.041	.232	.128	.040	
4.0	.249	.129	.038	.244	.127	.038	.233	.124	.037	.224	.120	.036	.215	.117	.036	
5.0	.230	.117	.034	.225	.116	.034	.216	.113	.033	.208	.110	.033	.200	.107	.032	
6.0	.213	.107	.031	.209	.106	.030	.201	.103	.030	.193	.100	.030	.186	.098	.029	
7.0	.198	.098	.028	.195	.097	.028	.187	.095	.027	.180	.092	.027	.174	.090	.027	
8.0	.185	.091	.025	.182	.090	.025	.175	.088	.025	.169	.086	.025	.163	.084	.024	
9.0	.174	.084	.023	.171	.083	.023	.165	.081	.023	.159	.080	.023	.154	.078	.023	
10.0	.163	.078	.022	.160	.077	.022	.155	.076	.021	.150	.074	.021	.145	.073	.021	

ρ_{cc}	80%			70%			50%			30%			10%			0
ρ_w	50%	30%	10%	50%	30%	10%	50%	30%	10%	50%	30%	10%	50%	30%	10%	0
ρ_{fc}	20%			20%			20%			20%			20%			0
RCR	RCR:Room Cavity Ratio						Ceiling Cavity Exitance Coefficients(CCEC)									
0.0	.208	.208	.208	.177	.177	.177	.121	.121	.121	.070	.070	.070	.022	.022	.022	
1.0	.198	.173	.151	.169	.149	.130	.116	.102	.090	.067	.059	.052	.021	.019	.017	
2.0	.190	.149	.115	.162	.128	.100	.111	.089	.070	.064	.052	.041	.021	.017	.013	
3.0	.182	.132	.092	.156	.114	.080	.107	.079	.056	.062	.046	.033	.020	.015	.011	
4.0	.174	.118	.076	.150	.102	.066	.103	.071	.046	.060	.042	.027	.019	.014	.009	
5.0	.167	.108	.065	.143	.094	.056	.099	.065	.040	.057	.038	.024	.018	.013	.008	
6.0	.160	.100	.057	.137	.086	.049	.095	.061	.035	.055	.036	.021	.018	.012	.007	
7.0	.153	.093	.051	.132	.081	.044	.091	.056	.031	.053	.033	.019	.017	.011	.006	
8.0	.147	.087	.046	.126	.076	.041	.087	.053	.029	.051	.031	.017	.016	.010	.006	
9.0	.140	.082	.043	.121	.071	.037	.084	.050	.027	.049	.030	.016	.016	.010	.005	
10.0	.135	.078	.040	.116	.068	.035	.081	.048	.025	.047	.028	.015	.015	.009	.005	

C Range: 0 - 360DEG
C Interval: 30.0DEG
Test Speed: HIGH
Temperature:25.3DEG
Operators:DAMIN
Test Date:2022-04-23

γ Range: 0 - 180DEG
 γ Interval: 1.0DEG
Test System:EVERFINE GO-2000A_V1 SYSTEM V2.00.443
Humidity:65.0%
Test Distance:8.000m [K=0.7063]
Remarks:

UGR(Unified Glare Rating) Table

Test:U:220.60V I:0.1890A P:40.000W PF:0.9590 Freq:50.00Hz		
Lamp Flux:5333.44x1 lm		
Name: NS61-595X595-40W (Sensor)	Type: LED	
MFR.: Lumega Group	DIM.: 595*595mm	
	SUR.: 530*530mm	

ceiling/cavity	0.7	0.7	0.5	0.5	0.3	0.7	0.7	0.5	0.5	0.3
walls	0.5	0.3	0.5	0.3	0.3	0.5	0.3	0.5	0.3	0.3
working plane	0.2	0.2	0.2	0.2	0.2	0.2	0.2	0.2	0.2	0.2
Room dimensions	Viewed crosswise					Viewed endwise				
x = 2H y = 2H	18.7	20.1	19.0	20.4	20.6	18.6	20.1	18.9	20.3	20.6
3H	20.1	21.5	20.4	21.7	22.0	20.0	21.4	20.4	21.7	22.0
4H	20.7	22.0	21.0	22.3	22.6	20.6	21.9	20.9	22.2	22.5
6H	21.0	22.3	21.4	22.6	22.9	20.9	22.1	21.3	22.4	22.8
8H	21.1	22.3	21.5	22.7	23.0	21.0	22.2	21.4	22.5	22.8
12H	21.2	22.3	21.6	22.7	23.0	21.0	22.2	21.4	22.5	22.9
4H 2H	19.2	20.5	19.6	20.8	21.1	19.2	20.5	19.5	20.8	21.1
3H	20.8	22.0	21.2	22.3	22.7	20.8	21.9	21.1	22.2	22.6
4H	21.5	22.5	21.9	22.9	23.3	21.4	22.5	21.8	22.8	23.2
6H	22.0	22.9	22.4	23.3	23.7	21.9	22.8	22.3	23.2	23.6
8H	22.1	23.0	22.6	23.4	23.9	22.0	22.9	22.4	23.3	23.7
12H	22.2	23.0	22.7	23.5	23.9	22.1	22.9	22.5	23.3	23.8
8H 4H	21.7	22.6	22.2	23.0	23.4	21.6	22.5	22.1	22.9	23.3
6H	22.3	23.0	22.8	23.5	24.0	22.2	22.9	22.7	23.4	23.8
8H	22.6	23.2	23.1	23.7	24.2	22.4	23.1	22.9	23.5	24.0
12H	22.7	23.3	23.2	23.8	24.3	22.6	23.1	23.1	23.6	24.1
12H 4H	21.7	22.5	22.2	22.9	23.4	21.6	22.4	22.1	22.8	23.3
6H	22.4	23.0	22.9	23.5	24.0	22.2	22.9	22.7	23.3	23.8
8H	22.6	23.2	23.1	23.7	24.2	22.5	23.0	23.0	23.5	24.1
Variations with the observer position at spacings(CIE Pub.117):										
S = 1.0H	+ 0.2 / - 0.2					+ 0.2 / - 0.2				
1.5H	+ 0.2 / - 0.3					+ 0.2 / - 0.3				
2.0H	+ 0.2 / - 0.2					+ 0.2 / - 0.3				

CIE Pub.117, 5333 lm Total Lamp Luminous Flux Corrected (8log(F/F0) = 5.8)
 Area: 0.28 m2

C Range: 0 - 360DEG
C Interval: 30.0DEG
Test Speed: HIGH
Temperature:25.3DEG
Operators:DAMIN
Test Date:2022-04-23

γ Range: 0 - 180DEG
γ Interval: 1.0DEG
Test System:EVERFINE GO-2000A_V1 SYSTEM V2.00.443
Humidity:65.0%
Test Distance:8.000m [K=0.7063]
Remarks:

UTILIZATION FACTORS TABLE

Test:U:220.60V I:0.1890A P:40.000W PF:0.9590 Freq:50.00Hz Lamp Flux:5333.44x1 lm		
Name: NS61-595X595-40W (Sensor)	Type: LED	
MFR.: Lumega Group	DIM.: 595*595mm	
	SUR.: 530*530mm	

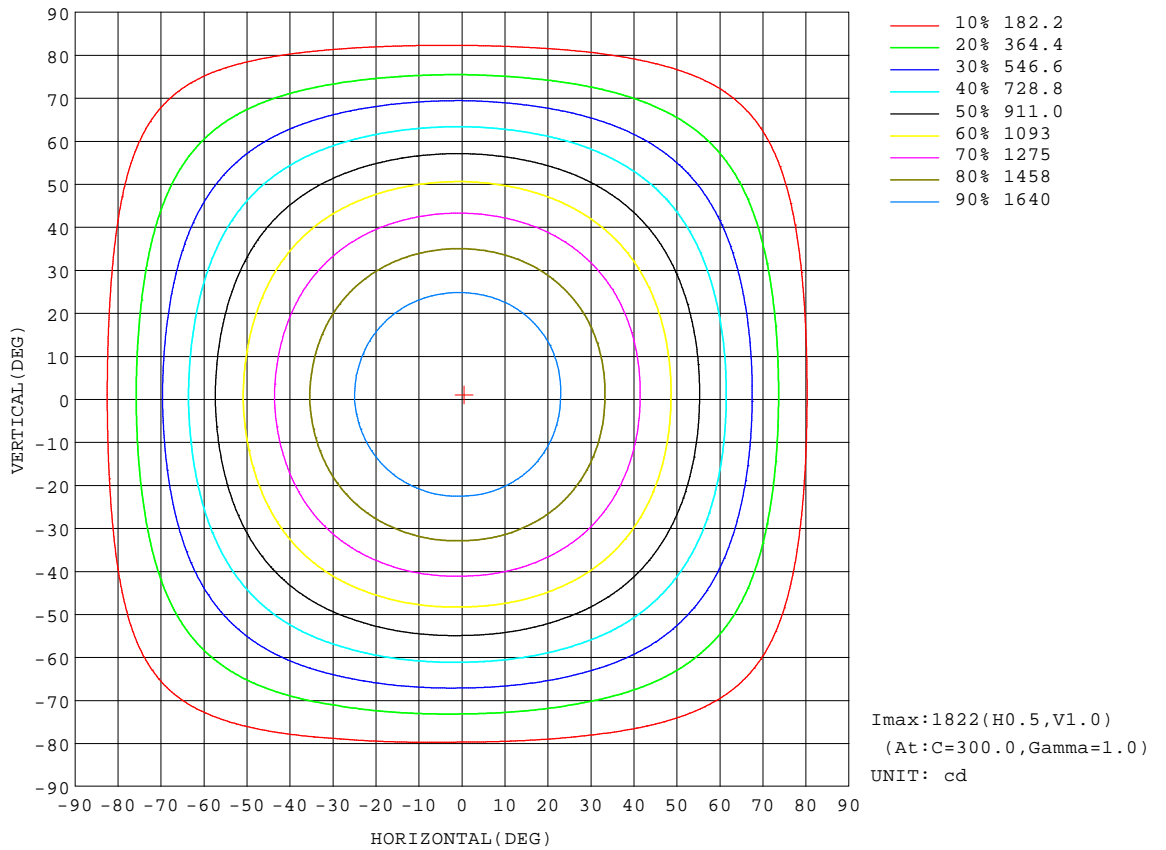
REFLECTANCE										
Ceiling	0.8	0.8	0.8	0.7	0.7	0.7	0.5	0.5	0.5	0
Walls	0.7	0.5	0.3	0.7	0.5	0.3	0.7	0.5	0.3	0
Working plane	0.2	0.2	0.2	0.2	0.2	0.2	0.2	0.2	0.2	0
ROOM INDEX	UTILIZATION FACTORS(PERCENT) $k(RI) \times RCR = 5$									
k = 0.60	57	45	38	56	45	38	55	44	38	31
0.80	67	55	48	66	55	47	64	54	47	40
1.00	75	64	57	74	63	56	71	64	56	48
1.25	82	72	64	81	71	64	78	69	63	55
1.50	87	77	70	85	76	70	82	74	68	60
2.00	94	85	79	92	84	78	88	82	76	68
2.50	98	90	84	96	89	83	92	86	81	72
3.00	101	94	89	99	93	88	95	89	85	76
4.00	105	100	95	103	98	93	98	94	90	81
5.00	108	103	99	105	101	97	100	97	94	84
ROOM INDEX	UF(total)									Direct
According to DIN EN 13032-2 2004			Suspended					SHRNOM = 1.25		

C Range: 0 - 360DEG
C Interval: 30.0DEG
Test Speed: HIGH
Temperature:25.3DEG
Operators:DAMIN
Test Date:2022-04-23

γ Range: 0 - 180DEG
γ Interval: 1.0DEG
Test System:EVERFINE GO-2000A_V1 SYSTEM V2.00.443
Humidity:65.0%
Test Distance:8.000m [K=0.7063]
Remarks:

ISOCANDELA DIAGRAM

Test:U:220.60V I:0.1890A P:40.000W PF:0.9590 Freq:50.00Hz		
Lamp Flux:5333.44x1 lm		
Name: NS61-595X595-40W (Sensor)	Type: LED	
MFR.: Lumega Group	DIM.: 595*595mm	
	SUR.: 530*530mm	



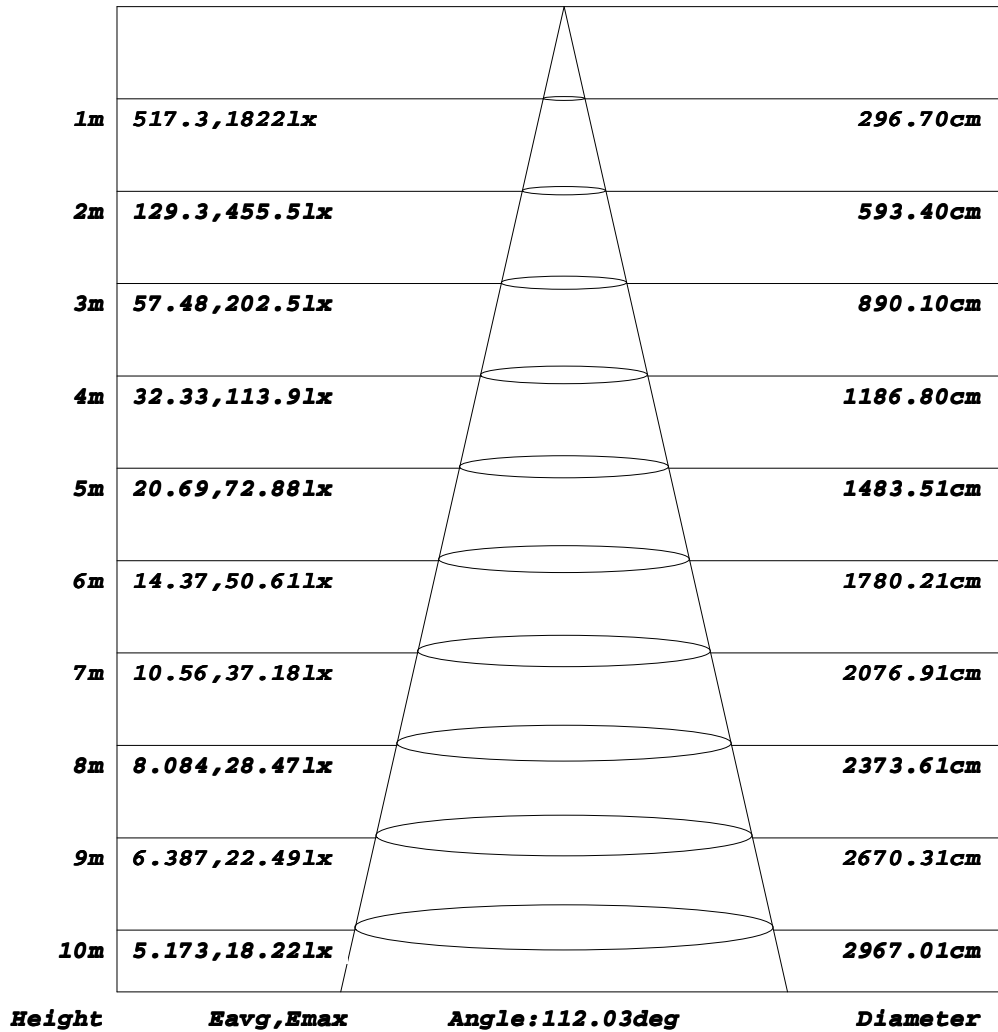
C Range: 0 - 360DEG
C Interval: 30.0DEG
Test Speed: HIGH
Temperature:25.3DEG
Operators:DAMIN
Test Date:2022-04-23

γ Range: 0 - 180DEG
γ Interval: 1.0DEG
Test System:EVERFINE GO-2000A_V1 SYSTEM V2.00.443
Humidity:65.0%
Test Distance:8.000m [K=0.7063]
Remarks:

AAI Figure

Test:U:220.60V I:0.1890A P:40.000W PF:0.9590 Freq:50.00Hz		
Lamp Flux:5333.44x1 lm		
Name: NS61-595X595-40W (Sensor)	Type: LED	
MFR.: Lumega Group	DIM.: 595*595mm	
	SUR.: 530*530mm	

Flux out:3854 lm



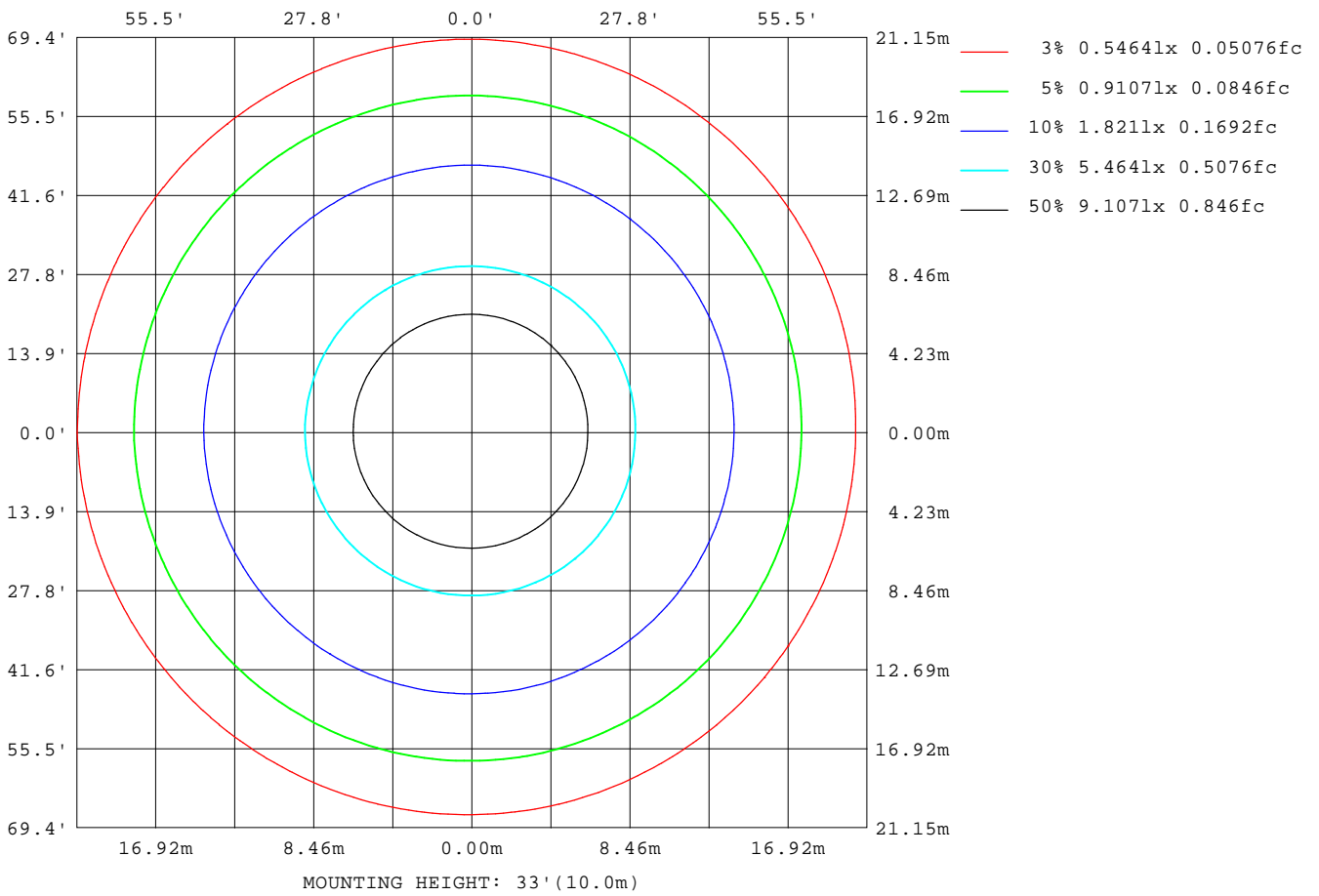
Note: The Curves indicate the illuminated area and the average illumination when the luminaire is at different distance.

C Range: 0 - 360DEG
C Interval: 30.0DEG
Test Speed: HIGH
Temperature: 25.3DEG
Operators: DAMIN
Test Date: 2022-04-23

γ Range: 0 - 180DEG
γ Interval: 1.0DEG
Test System: EVERFINE GO-2000A_V1 SYSTEM V2.00.443
Humidity: 65.0%
Test Distance: 8.000m [K=0.7063]
Remarks:

ISOLUX DIAGRAM

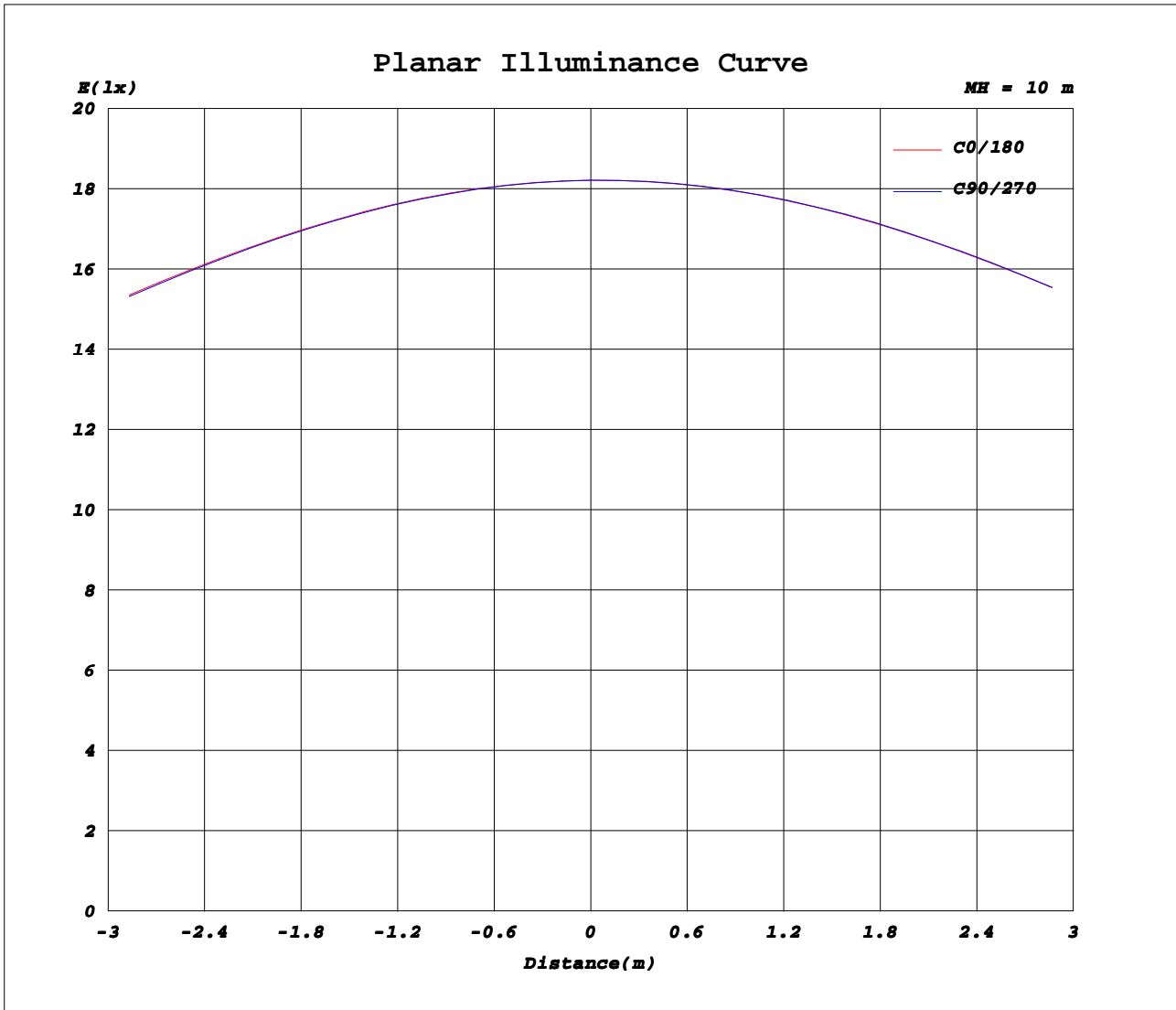
Test:U:220.60V I:0.1890A P:40.000W PF:0.9590 Freq:50.00Hz		
Lamp Flux:5333.44x1 lm		
Name: NS61-595X595-40W (Sensor)	Type: LED	
MFR.: Lumega Group	DIM.: 595*595mm	
	SUR.: 530*530mm	



C Range: 0 - 360DEG
C Interval: 30.0DEG
Test Speed: HIGH
Temperature: 25.3DEG
Operators: DAMIN
Test Date: 2022-04-23

γ Range: 0 - 180DEG
γ Interval: 1.0DEG
Test System: EVERFINE GO-2000A_V1 SYSTEM V2.00.443
Humidity: 65.0%
Test Distance: 8.000m [K=0.7063]
Remarks:

Planar Illuminance Curve



C Range: 0 - 360DEG
C Interval: 30.0DEG
Test Speed: HIGH
Temperature: 25.3DEG
Operators: DAMIN
Test Date: 2022-04-23

γ Range: 0 - 180DEG
γ Interval: 1.0DEG
Test System: EVERFINE GO-2000A_V1 SYSTEM V2.00.443
Humidity: 65.0%
Test Distance: 8.000m [K=0.7063]
Remarks:

LUMINOUS DISTRIBUTION INTENSITY DATA

Test:U:220.60V I:0.1890A P:40.000W PF:0.9590 Freq:50.00Hz		
Lamp Flux:5333.44x1 lm		
Name: NS61-595X595-40W (Sensor)	Type: LED	
MFR.: Lumega Group	DIM.: 595*595mm	
	SUR.: 530*530mm	

Table--1

UNIT: cd

C (DEG) \ γ (DEG)	0	30	60	90	120	150	180	210	240	270	300	330							
0	1821	1821	1821	1821	1822	1822	1821	1821	1821	1821	1822	1822							
5	1810	1809	1808	1809	1811	1814	1817	1817	1817	1818	1816	1813							
10	1782	1780	1779	1780	1784	1790	1796	1797	1797	1797	1793	1788							
15	1739	1736	1734	1736	1741	1750	1759	1761	1761	1760	1756	1749							
20	1681	1676	1675	1676	1683	1695	1706	1709	1709	1706	1701	1693							
25	1608	1602	1600	1601	1611	1625	1640	1643	1641	1636	1632	1623							
30	1521	1516	1513	1514	1525	1542	1560	1562	1559	1554	1548	1537							
35	1420	1417	1414	1414	1427	1448	1466	1467	1463	1457	1451	1439							
40	1309	1306	1302	1302	1317	1339	1359	1360	1356	1350	1343	1330							
45	1186	1182	1178	1178	1195	1220	1242	1243	1239	1233	1224	1208							
50	1058	1049	1046	1050	1064	1091	1118	1116	1112	1109	1096	1078							
55	918	908	905	910	925	951	979	979	974	971	958	940							
60	772	761	758	763	778	806	835	834	830	827	813	794							
65	622	610	607	612	628	656	687	686	681	679	665	646							
70	472	457	453	460	475	504	536	534	530	528	513	494							
75	325	310	305	311	326	355	386	385	380	377	364	346							
80	188	180	175	175	191	218	247	248	242	237	228	213							
85	79.7	74.9	71.3	71.5	83.5	103	123	128	127	122	114	101							
90	10.1	10.7	10.5	10.1	9.67	17.8	31.6	35.1	35.0	33.0	28.3	20.7							
95	11.4	11.6	11.4	11.1	11.3	12.5	14.2	14.2	14.0	13.9	14.2	13.6							
100	12.7	12.7	12.6	12.4	12.3	13.4	15.3	15.3	15.0	15.0	15.4	14.7							
105	13.9	13.8	13.8	13.8	13.5	14.5	16.5	16.5	16.3	16.3	16.6	15.9							
110	15.0	15.0	15.0	15.1	14.7	15.7	17.5	17.6	17.4	17.4	17.7	17.0							
115	16.1	16.1	16.2	16.2	15.9	16.8	18.6	18.6	18.5	18.5	18.7	18.1							
120	17.2	17.2	17.3	17.3	17.0	17.9	19.7	19.7	19.5	19.6	19.8	19.1							
125	18.3	18.3	18.4	18.5	18.1	19.0	20.7	20.7	20.6	20.6	20.7	20.1							
130	19.5	19.5	19.5	19.6	19.3	20.1	21.7	21.7	21.6	21.6	21.7	21.1							
135	20.6	20.6	20.7	20.7	20.5	21.2	22.7	22.7	22.6	22.6	22.7	22.1							
140	21.7	21.7	21.8	21.9	21.6	22.3	23.7	23.7	23.6	23.5	23.6	23.1							
145	22.9	22.9	23.0	23.1	22.8	23.4	24.6	24.7	24.6	24.5	24.6	24.1							
150	24.2	24.2	24.3	24.4	24.1	24.6	25.5	25.7	25.6	25.5	25.6	25.2							
155	25.6	25.4	25.5	25.8	25.3	25.6	26.5	26.6	26.6	26.5	26.5	26.2							
160	26.6	26.5	26.6	26.8	26.5	26.7	27.5	27.5	27.4	27.5	27.4	27.1							
165	27.4	27.4	27.5	27.7	27.4	27.5	28.1	28.1	28.0	28.1	28.1	27.8							
170	27.9	28.0	28.1	28.2	27.9	28.1	28.5	28.5	28.5	28.6	28.6	28.3							
175	28.3	28.4	28.5	28.5	28.4	28.4	28.6	28.7	28.7	28.8	28.7	28.6							
180	28.5	28.7	28.7	28.7	28.7	28.6	28.5	28.6	28.7	28.7	28.7	28.6							

C Range: 0 - 360DEG
C Interval: 30.0DEG
Test Speed: HIGH
Temperature: 25.3DEG
Operators: DAMIN
Test Date: 2022-04-23

γ Range: 0 - 180DEG
γ Interval: 1.0DEG
Test System: EVERFINE GO-2000A_V1 SYSTEM V2.00.443
Humidity: 65.0%
Test Distance: 8.000m [K=0.7063]
Remarks: