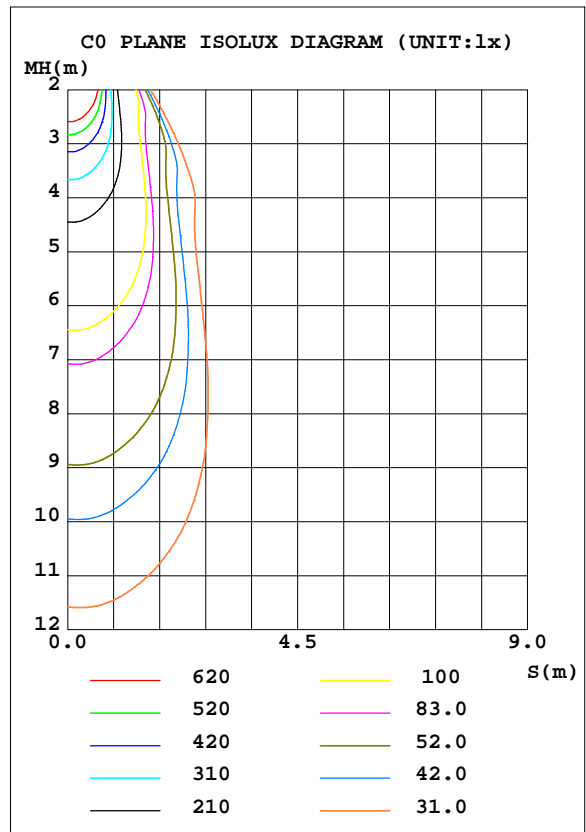
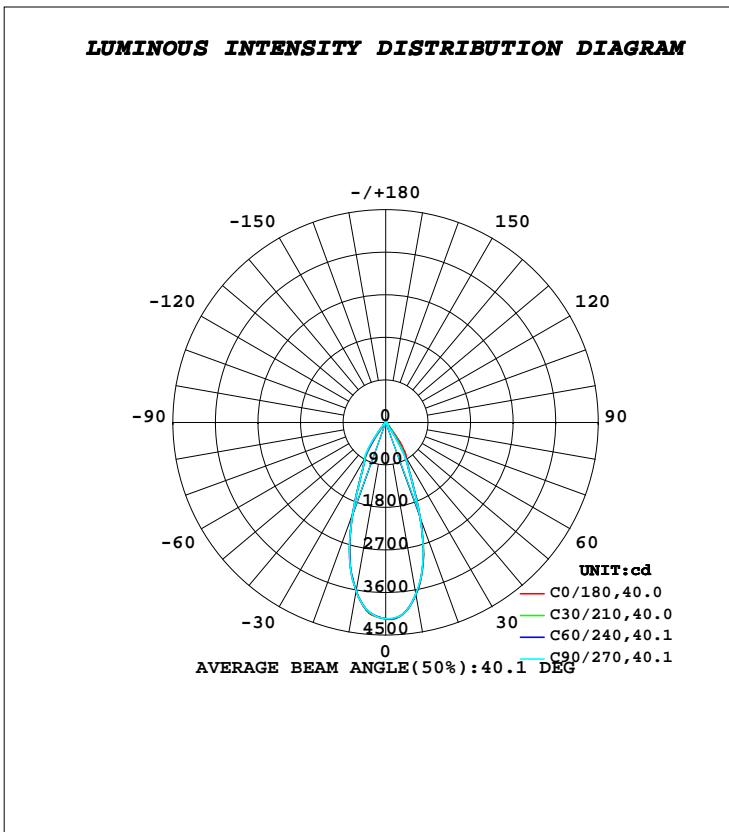


LUMINAIRE PHOTOMETRIC TEST REPORT

Test:U:221.70V I:0.0970A P:20.000W PF:0.9280 Freq:50.00Hz		
Lamp Flux:2171x1 lm		
Name: NS98-φ95mm-20W	Type: LED	
MFR.: Lumega Group	DIM.: D95*199mm	
	SUR.: D67mm	

DATA OF LAMP		PHOTOMETRIC DATA Eff: 108.55 lm/W			
MODEL		I _{max} (cd)	4167	S/MH(C0/180)	0.64
NOMINAL POWER(W)	20	LOR(%)	100.0	S/MH(C90/270)	0.63
RATED VOLTAGE(V)	220	TOTAL FLUX(lm)	2171.0	η UP, DN(C0-180)	1.3, 47.4
NOMINAL FLUX(lm)	2171	CIE CLASS	DIRECT	η UP, DN(C180-360)	1.6, 49.7
LAMPS INSIDE	1	η up(%)	2.9	CIBSE SHR NOM	0.50
TEST VOLTAGE(V)	220	η down(%)	97.1	CIBSE SHR MAX	0.60



C Range: 0 - 360DEG
C Interval: 30.0DEG
Test Speed: HIGH
Temperature: 25.3DEG
Operators: DAMIN
Test Date: 2022-05-04

γ Range: 0 - 180DEG
γ Interval: 1.0DEG
Test System: EVERFINE GO-2000A_V1 SYSTEM V2.00.443
Humidity: 65.0%
Test Distance: 8.000m [K=0.7063]
Remarks:

ZONAL FLUX DIAGRAM

ZONAL FLUX DIAGRAM:

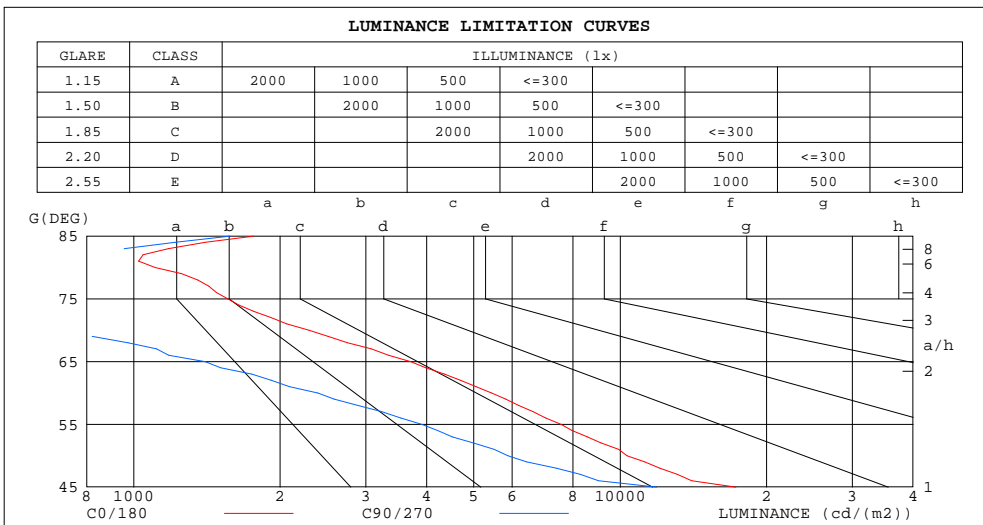
γ	C0	C45	C90	C135	C180	C225	C270	C315	γ	Φ zone	Φ total	%lum,lamp
10	3698	3692	3678	3651	3625	3617	3623	3652	0- 10	374.2	374.2	17.2,17.2
20	2131	2133	2120	2083	2046	2039	2049	2081	10- 20	814.2	1188	54.7,54.7
30	885.3	793.6	758.1	813.3	883.7	896.2	893.7	891.6	20- 30	596.9	1785	82.2,82.2
40	198.4	116.3	65.14	54.74	71.04	123.8	178.1	197.8	30- 40	263.8	2049	94.4,94.4
50	23.24	16.64	13.23	14.35	17.59	22.55	26.65	26.33	40- 50	38.16	2087	96.1,96.1
60	9.520	6.007	4.186	4.701	6.470	9.736	12.43	11.96	50- 60	11.88	2099	96.7,96.7
70	2.748	1.299	0.7538	1.558	2.827	4.166	5.021	4.381	60- 70	4.954	2104	96.9,96.9
80	0.6724	0.1975	0.3216	1.434	2.666	3.316	3.402	2.422	70- 80	2.187	2106	97,97
90	0.6826	0.3681	0.7039	2.183	3.651	3.935	3.570	2.438	80- 90	2.112	2108	97.1,97.1
100	1.260	1.021	1.437	3.017	4.556	4.803	4.360	3.133	90-100	2.783	2111	97.2,97.2
110	2.776	2.640	3.121	4.725	6.241	6.367	5.809	4.581	100-110	3.881	2115	97.4,97.4
120	5.353	5.253	5.729	7.267	8.692	8.688	8.055	6.933	110-120	5.624	2121	97.7,97.7
130	9.592	9.692	10.19	11.47	12.59	12.38	11.68	10.77	120-130	7.944	2129	98,98
140	15.27	15.47	15.93	16.96	17.81	17.54	16.89	16.15	130-140	10.54	2139	98.5,98.5
150	21.16	21.39	21.77	22.49	23.07	22.85	22.35	21.81	140-150	12.10	2151	99.1,99.1
160	23.46	24.01	24.49	24.91	25.21	25.29	25.11	24.46	150-160	11.03	2162	99.6,99.6
170	21.39	21.78	22.18	22.70	22.99	22.44	21.75	21.47	160-170	6.676	2169	99.9,99.9
180	20.83	20.50	20.38	20.62	20.86	20.59	20.32	20.46	170-180	2.028	2171	100,100
DEG	LUMINOUS INTENSITY:cd									UNIT:lm		

C Range: 0 - 360DEG
C Interval: 30.0DEG
Test Speed: HIGH
Temperature:25.3DEG
Operators:DAMIN
Test Date:2022-05-04

γ Range: 0 - 180DEG
 γ Interval: 1.0DEG
Test System:EVERFINE GO-2000A_V1 SYSTEM V2.00.443
Humidity:65.0%
Test Distance:8.000m [K=0.7063]
Remarks:

LUMINANCE LIMITATION CURVES

Test:U:221.70V I:0.0970A P:20.000W PF:0.9280 Freq:50.00Hz		
Lamp Flux:2171x1 lm		
Name: NS98-φ95mm-20W	Type: LED	
MFR.: Lumega Group	DIM.: D95*199mm	
	SUR.: D67mm	



LUMINANCE cd/(m2)		
G(DEG)	C0/180	C90/270
85	1762	1576
80	1106	529
75	1561	274
70	2296	630
65	3710	1401
60	5440	2392
55	7563	3909
50	10330	5881
45	17284	11898

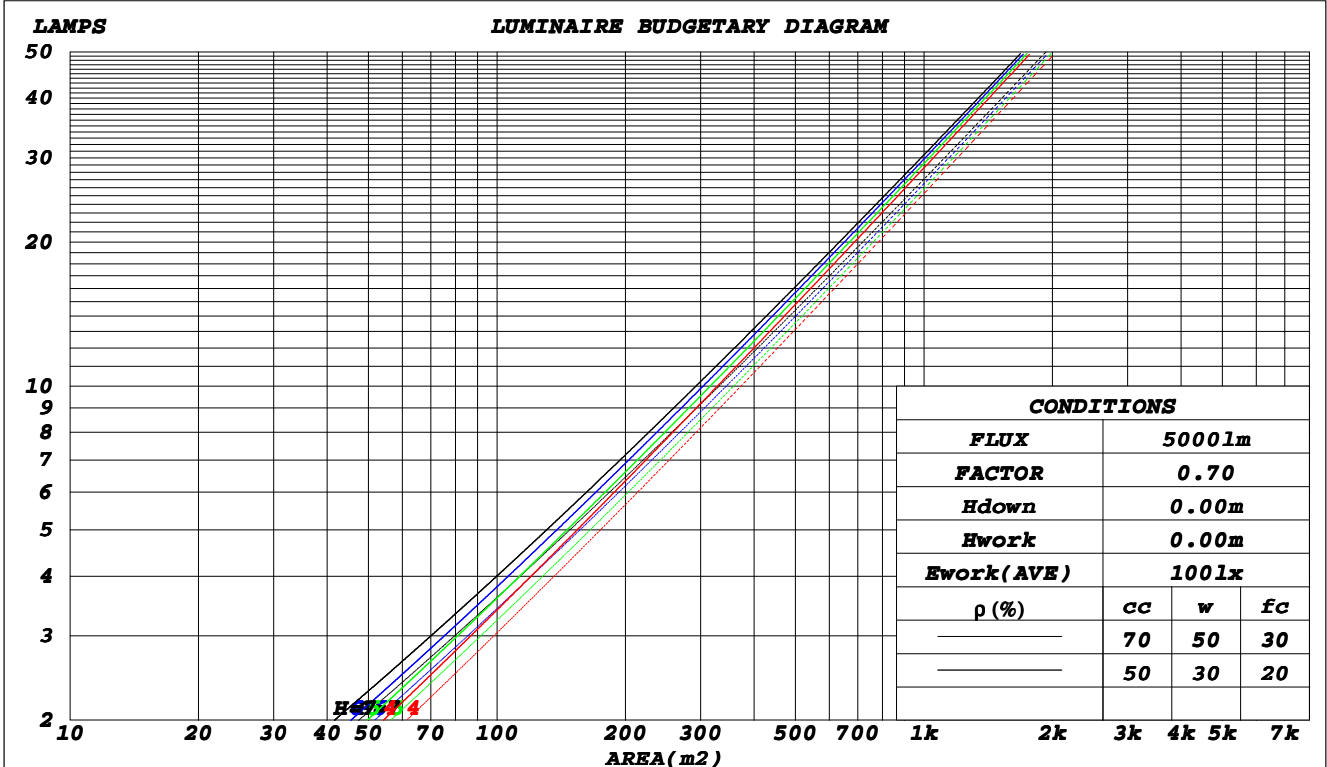
C Range: 0 - 360DEG
C Interval: 30.0DEG
Test Speed: HIGH
Temperature: 25.3DEG
Operators: DAMIN
Test Date: 2022-05-04

γ Range: 0 - 180DEG
γ Interval: 1.0DEG
Test System: EVERFINE GO-2000A_V1 SYSTEM V2.00.443
Humidity: 65.0%
Test Distance: 8.000m [K=0.7063]
Remarks:

CU AND LUMINAIRE BUDGETARY ESTIMATE DIAGRAM

Test:U:221.70V I:0.0970A P:20.000W PF:0.9280 Freq:50.00Hz		
Lamp Flux:2171x1 lm		
Name: NS98-φ95mm-20W	Type: LED	
MFR.: Lumega Group	DIM.: D95*199mm	
	SUR.: D67mm	

ρ _{cc}	80%			70%			50%			30%			10%			0
ρ _w	50%	30%	10%	50%	30%	10%	50%	30%	10%	50%	30%	10%	50%	30%	10%	0
ρ _{fc}	20%			20%			20%			20%			20%			0
RCR	RCR:Room Cavity Ratio						Coefficients of Utilization(CU)									
0.0	1.18	1.18	1.18	1.15	1.15	1.15	1.10	1.10	1.10	1.04	1.04	1.04	.99	.99	.99	.97
1.0	1.11	1.09	1.06	1.08	1.06	1.05	1.04	1.02	1.01	.98	.97	.96	.96	.95	.94	.92
2.0	1.04	1.00	.97	1.02	.99	.96	.99	.96	.94	.95	.93	.91	.92	.90	.89	.87
3.0	.98	.94	.90	.97	.92	.89	.94	.90	.87	.91	.88	.86	.88	.86	.84	.83
4.0	.93	.88	.84	.91	.87	.83	.89	.85	.82	.87	.84	.81	.85	.82	.80	.78
5.0	.88	.83	.79	.87	.82	.78	.85	.81	.78	.83	.79	.77	.81	.78	.76	.74
6.0	.83	.78	.74	.83	.78	.74	.81	.77	.73	.79	.76	.73	.78	.75	.72	.71
7.0	.79	.74	.70	.79	.74	.70	.77	.73	.70	.76	.72	.69	.75	.71	.69	.67
8.0	.76	.71	.67	.75	.70	.67	.74	.69	.66	.73	.69	.66	.72	.68	.65	.64
9.0	.72	.67	.64	.72	.67	.64	.71	.66	.63	.70	.66	.63	.69	.65	.62	.61
10.0	.69	.64	.61	.69	.64	.61	.68	.63	.60	.67	.63	.60	.66	.62	.60	.59



C Range: 0 - 360DEG
 C Interval: 30.0DEG
 Test Speed: HIGH
 Temperature:25.3DEG
 Operators:DAMIN
 Test Date:2022-05-04

γ Range: 0 - 180DEG
 γ Interval: 1.0DEG
 Test System:EVERFINE GO-2000A_V1 SYSTEM V2.00.443
 Humidity:65.0%
 Test Distance:8.000m [K=0.7063]
 Remarks:

WEC AND CCEC

Test:U:221.70V I:0.0970A P:20.000W PF:0.9280 Freq:50.00Hz		
Lamp Flux:2171x1 lm		
Name: NS98-φ95mm-20W	Type: LED	
MFR.: Lumega Group	DIM.: D95*199mm	
	SUR.: D67mm	

ρ_{cc}	80%			70%			50%			30%			10%			0
ρ_w	50%	30%	10%	50%	30%	10%	50%	30%	10%	50%	30%	10%	50%	30%	10%	0
ρ_{fc}	20%			20%			20%			20%			20%			0
RCR	RCR:Room Cavity Ratio						Wall Exitance Coefficients(WEC)									
0.0																
1.0	.163	.093	.029	.156	.089	.028	.142	.081	.026	.129	.074	.024	.117	.068	.022	
2.0	.154	.084	.026	.148	.081	.025	.136	.075	.023	.125	.070	.022	.114	.065	.020	
3.0	.145	.077	.023	.140	.075	.023	.130	.070	.021	.120	.066	.020	.111	.062	.019	
4.0	.138	.072	.021	.133	.070	.021	.124	.066	.020	.116	.062	.019	.108	.059	.018	
5.0	.131	.067	.019	.127	.065	.019	.119	.062	.018	.112	.059	.018	.105	.056	.017	
6.0	.124	.062	.018	.121	.061	.018	.114	.058	.017	.108	.056	.016	.102	.053	.016	
7.0	.119	.059	.017	.116	.058	.016	.109	.055	.016	.104	.053	.015	.098	.051	.015	
8.0	.114	.056	.016	.111	.055	.015	.105	.053	.015	.100	.051	.015	.095	.049	.014	
9.0	.109	.053	.015	.106	.052	.015	.101	.050	.014	.097	.048	.014	.092	.047	.014	
10.0	.104	.050	.014	.102	.049	.014	.098	.048	.013	.093	.046	.013	.089	.045	.013	

ρ_{cc}	80%			70%			50%			30%			10%			0
ρ_w	50%	30%	10%	50%	30%	10%	50%	30%	10%	50%	30%	10%	50%	30%	10%	0
ρ_{fc}	20%			20%			20%			20%			20%			0
RCR	RCR:Room Cavity Ratio						Ceiling Cavity Exitance Coefficients(CCEC)									
0.0	.212	.212	.212	.182	.182	.182	.124	.124	.124	.071	.071	.071	.023	.023	.023	
1.0	.192	.180	.168	.165	.154	.145	.113	.106	.100	.065	.061	.058	.021	.020	.019	
2.0	.176	.155	.137	.151	.133	.118	.103	.092	.083	.060	.054	.048	.019	.017	.016	
3.0	.163	.136	.114	.140	.117	.099	.096	.081	.070	.055	.048	.041	.018	.015	.013	
4.0	.152	.121	.097	.130	.105	.085	.090	.073	.060	.052	.043	.035	.017	.014	.012	
5.0	.143	.109	.085	.122	.094	.074	.084	.066	.052	.049	.039	.031	.016	.013	.010	
6.0	.135	.100	.075	.116	.086	.065	.080	.060	.046	.046	.036	.027	.015	.012	.009	
7.0	.128	.092	.067	.110	.080	.058	.076	.056	.041	.044	.033	.025	.014	.011	.008	
8.0	.122	.086	.061	.105	.074	.053	.073	.052	.038	.042	.031	.022	.014	.010	.007	
9.0	.117	.080	.056	.101	.070	.049	.070	.049	.034	.041	.029	.021	.013	.009	.007	
10.0	.112	.076	.052	.097	.066	.045	.067	.046	.032	.039	.027	.019	.013	.009	.006	

C Range: 0 - 360DEG
C Interval: 30.0DEG
Test Speed: HIGH
Temperature:25.3DEG
Operators:DAMIN
Test Date:2022-05-04

γ Range: 0 - 180DEG
 γ Interval: 1.0DEG
Test System:EVERFINE GO-2000A_V1 SYSTEM V2.00.443
Humidity:65.0%
Test Distance:8.000m [K=0.7063]
Remarks:

UGR(Unified Glare Rating) Table

Test:U:221.70V I:0.0970A P:20.000W PF:0.9280 Freq:50.00Hz		
Lamp Flux:2171x1 lm		
Name: NS98-φ95mm-20W	Type: LED	
MFR.: Lumega Group	DIM.: D95*199mm	
	SUR.: D67mm	

ceiling/cavity	0.7	0.7	0.5	0.5	0.3	0.7	0.7	0.5	0.5	0.3
walls	0.5	0.3	0.5	0.3	0.3	0.5	0.3	0.5	0.3	0.3
working plane	0.2	0.2	0.2	0.2	0.2	0.2	0.2	0.2	0.2	0.2
Room dimensions	Viewed crosswise					Viewed endwise				
x = 2H y = 2H	19.3	20.2	19.6	20.4	20.6	15.9	16.7	16.2	16.9	17.1
3H	19.2	19.9	19.5	20.2	20.4	15.7	16.5	16.0	16.7	17.0
4H	19.1	19.8	19.4	20.1	20.3	15.6	16.3	15.9	16.6	16.9
6H	19.0	19.7	19.3	20.0	20.3	15.5	16.2	15.9	16.5	16.8
8H	19.0	19.6	19.3	19.9	20.2	15.5	16.1	15.8	16.4	16.7
12H	18.9	19.5	19.3	19.8	20.2	15.4	16.1	15.8	16.4	16.7
4H 2H	19.1	19.8	19.4	20.1	20.3	15.7	16.4	16.0	16.6	16.9
3H	18.9	19.5	19.3	19.8	20.2	15.5	16.1	15.8	16.4	16.7
4H	18.8	19.4	19.2	19.7	20.1	15.4	15.9	15.8	16.3	16.6
6H	18.7	19.2	19.1	19.6	20.0	15.3	15.7	15.7	16.1	16.5
8H	18.7	19.1	19.1	19.5	19.9	15.2	15.7	15.6	16.1	16.5
12H	18.6	19.0	19.1	19.4	19.9	15.2	15.6	15.6	16.0	16.4
8H 4H	18.7	19.1	19.1	19.5	19.9	15.2	15.7	15.6	16.1	16.5
6H	18.5	18.9	19.0	19.4	19.8	15.1	15.5	15.6	15.9	16.4
8H	18.5	18.8	19.0	19.3	19.8	15.0	15.4	15.5	15.8	16.3
12H	18.4	18.7	18.9	19.2	19.7	15.0	15.3	15.5	15.7	16.3
12H 4H	18.6	19.0	19.1	19.4	19.9	15.1	15.6	15.6	16.0	16.4
6H	18.5	18.8	19.0	19.3	19.8	15.0	15.4	15.5	15.8	16.3
8H	18.4	18.7	18.9	19.2	19.7	15.0	15.3	15.5	15.7	16.3
Variations with the observer position at spacings(CIE Pub.117):										
S = 1.0H	+ 5.1 / -11.7					+ 3.0 / - 8.3				
1.5H	+ 7.8 / -10.6					+ 5.0 / - 5.7				
2.0H	+ 5.0 / - 4.5					+ 5.0 / - 4.7				

CIE Pub.117, 2171 lm Total Lamp Luminous Flux Corrected (8log(F/F0) = 2.7)
 Area: 0.0035 m2

C Range: 0 - 360DEG
C Interval: 30.0DEG
Test Speed: HIGH
Temperature:25.3DEG
Operators:DAMIN
Test Date:2022-05-04

γ Range: 0 - 180DEG
γ Interval: 1.0DEG
Test System:EVERFINE GO-2000A_V1 SYSTEM V2.00.443
Humidity:65.0%
Test Distance:8.000m [K=0.7063]
Remarks:

UTILIZATION FACTORS TABLE

Test:U:221.70V I:0.0970A P:20.000W PF:0.9280 Freq:50.00Hz Lamp Flux:2171x1 lm		
Name: NS98-φ95mm-20W	Type: LED	
MFR.: Lumega Group	DIM.: D95*199mm	
	SUR.: D67mm	

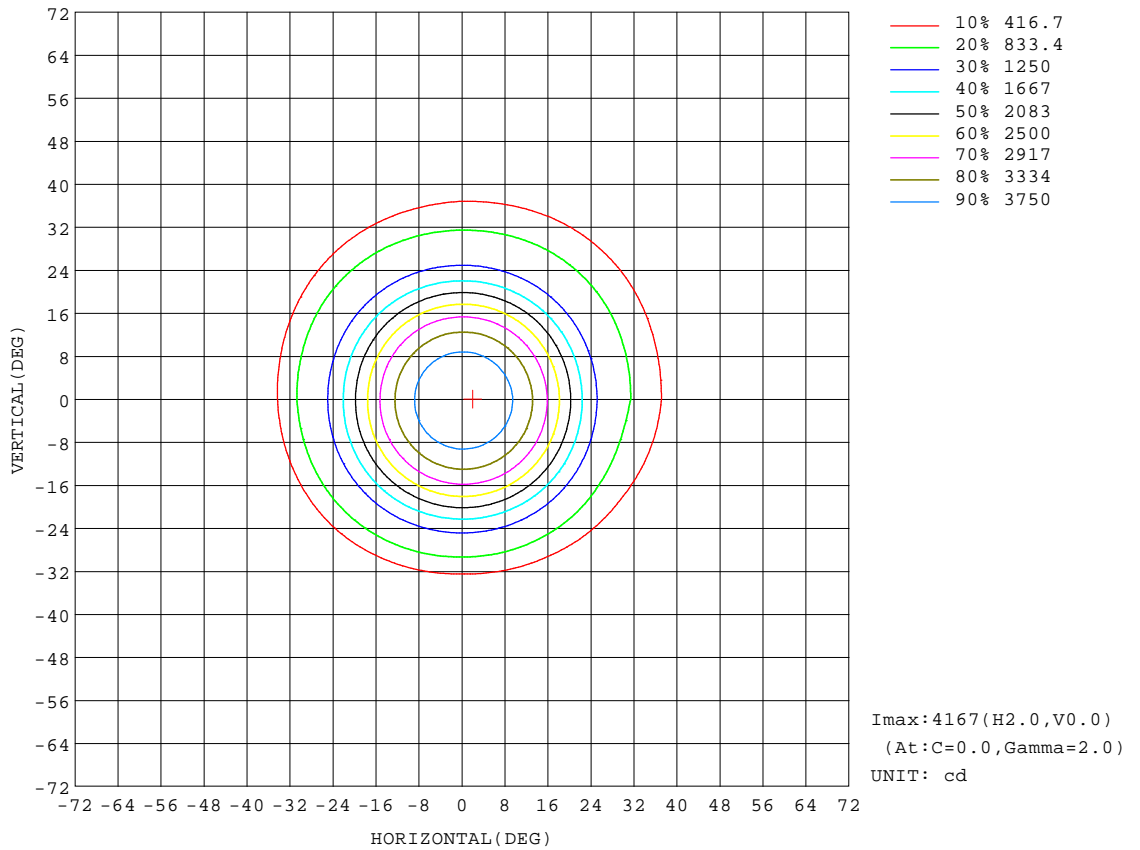
REFLECTANCE										
Ceiling	0.8	0.8	0.8	0.7	0.7	0.7	0.5	0.5	0.5	0
Walls	0.7	0.5	0.3	0.7	0.5	0.3	0.7	0.5	0.3	0
Working plane	0.2	0.2	0.2	0.2	0.2	0.2	0.2	0.2	0.2	0
ROOM INDEX	UTILIZATION FACTORS(PERCENT) $k(RI) \times RCR = 5$									
k = 0.60	88	82	78	87	82	78	87	81	78	75
0.80	95	90	86	94	89	86	93	88	85	82
1.00	99	94	90	98	93	90	96	93	89	85
1.25	103	98	95	102	97	94	100	96	93	89
1.50	106	101	98	104	100	97	102	98	96	91
2.00	108	104	101	106	103	100	103	101	98	92
2.50	110	106	103	108	105	102	104	102	100	93
3.00	111	108	105	109	106	104	105	103	101	94
4.00	113	111	108	111	109	107	107	105	104	96
5.00	114	112	110	112	110	109	108	106	105	97
ROOM INDEX	UF(total)									Direct
According to DIN EN 13032-2 2004			Suspended					SHRNOM = 1.25		

C Range: 0 - 360DEG
C Interval: 30.0DEG
Test Speed: HIGH
Temperature:25.3DEG
Operators:DAMIN
Test Date:2022-05-04

γ Range: 0 - 180DEG
γ Interval: 1.0DEG
Test System:EVERFINE GO-2000A_V1 SYSTEM V2.00.443
Humidity:65.0%
Test Distance:8.000m [K=0.7063]
Remarks:

ISOCANDELA DIAGRAM

Test:U:221.70V I:0.0970A P:20.000W PF:0.9280 Freq:50.00Hz		
Lamp Flux:2171x1 lm		
Name: NS98-φ95mm-20W	Type: LED	
MFR.: Lumega Group	DIM.: D95*199mm	
	SUR.: D67mm	



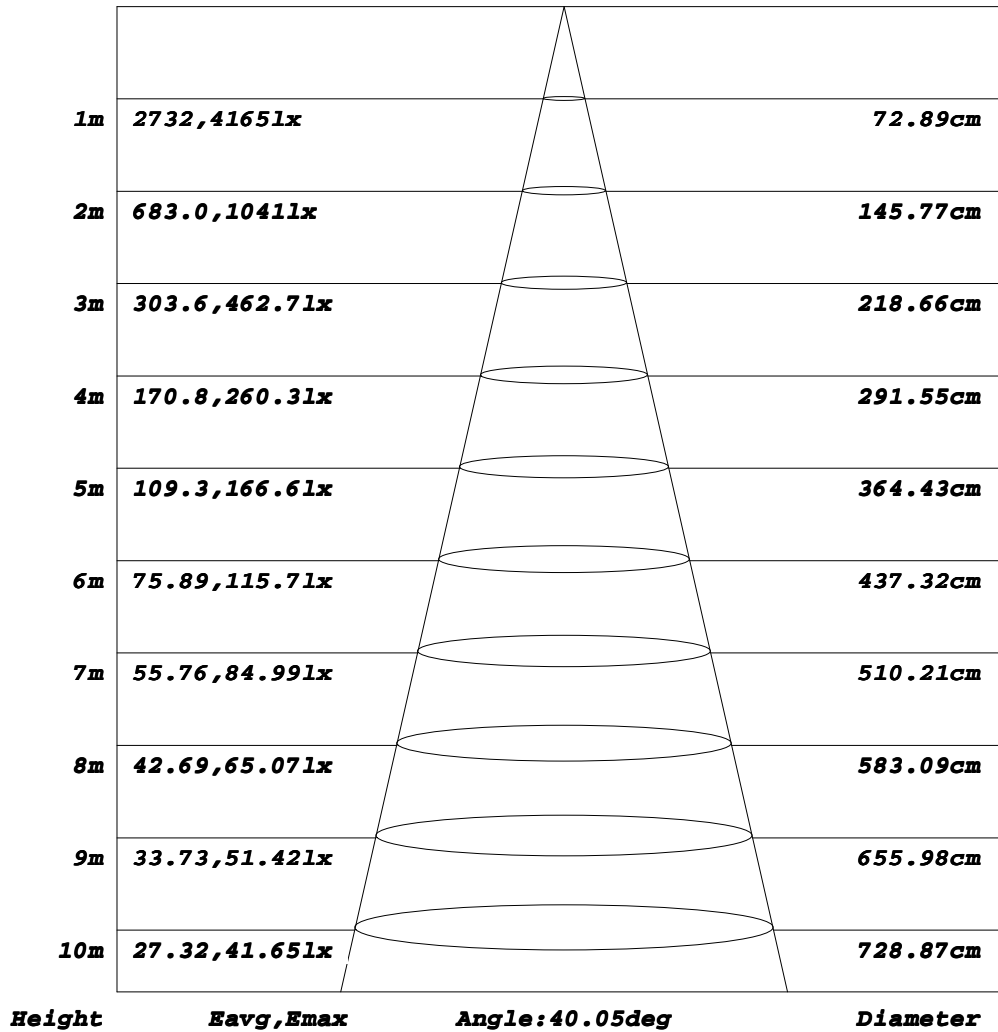
C Range: 0 - 360DEG
C Interval: 30.0DEG
Test Speed: HIGH
Temperature: 25.3DEG
Operators: DAMIN
Test Date: 2022-05-04

γ Range: 0 - 180DEG
γ Interval: 1.0DEG
Test System: EVERFINE GO-2000A_V1 SYSTEM V2.00.443
Humidity: 65.0%
Test Distance: 8.000m [K=0.7063]
Remarks:

AAI Figure

Test:U:221.70V I:0.0970A P:20.000W PF:0.9280 Freq:50.00Hz		
Lamp Flux:2171x1 lm		
Name: NS98-φ95mm-20W	Type: LED	
MFR.: Lumega Group	DIM.: D95*199mm	
	SUR.: D67mm	

Flux out:1265 lm



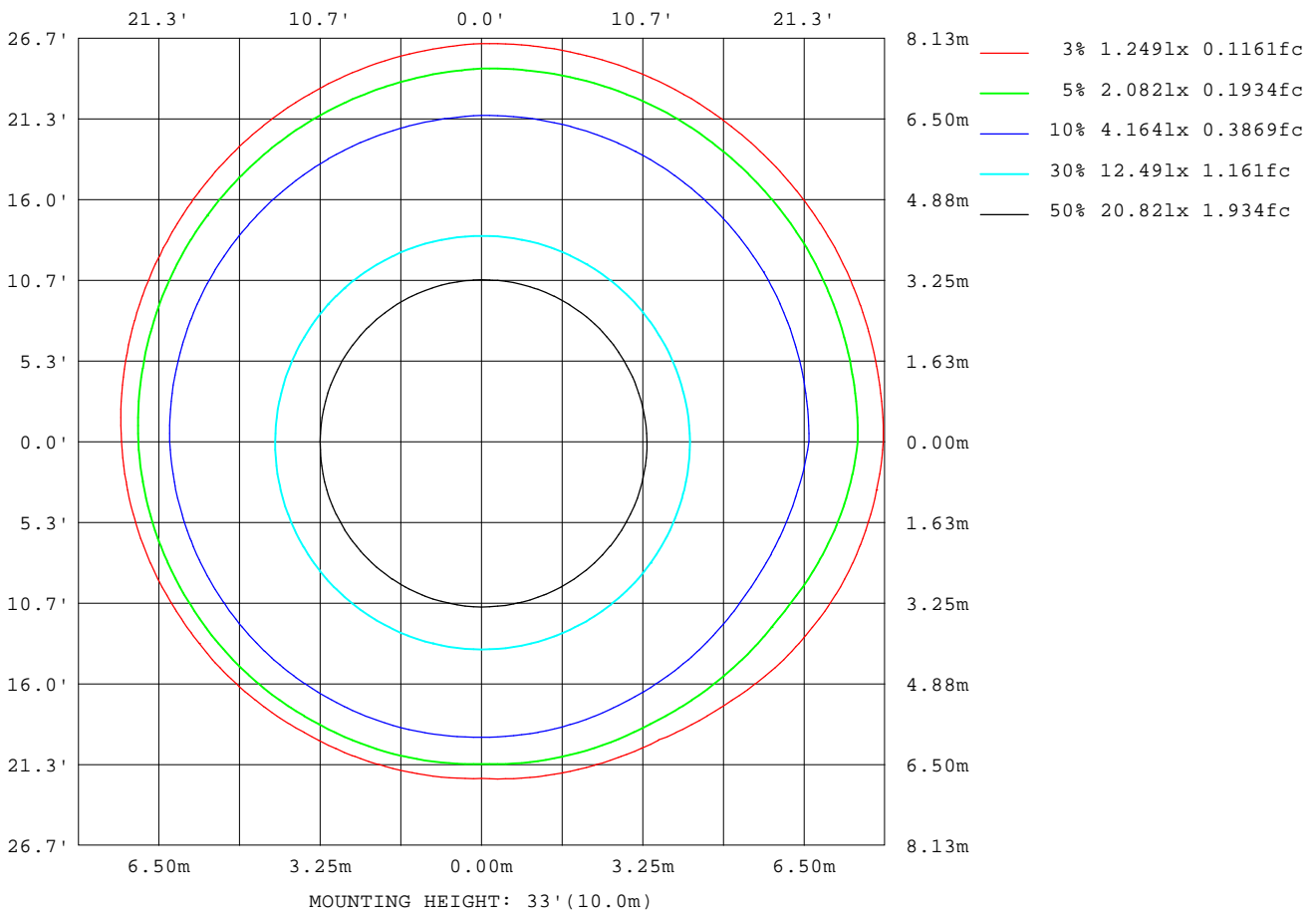
Note: The Curves indicate the illuminated area and the average illumination when the luminaire is at different distance.

C Range: 0 - 360DEG
C Interval: 30.0DEG
Test Speed: HIGH
Temperature: 25.3DEG
Operators: DAMIN
Test Date: 2022-05-04

γ Range: 0 - 180DEG
γ Interval: 1.0DEG
Test System: EVERFINE GO-2000A_V1 SYSTEM V2.00.443
Humidity: 65.0%
Test Distance: 8.000m [K=0.7063]
Remarks:

ISOLUX DIAGRAM

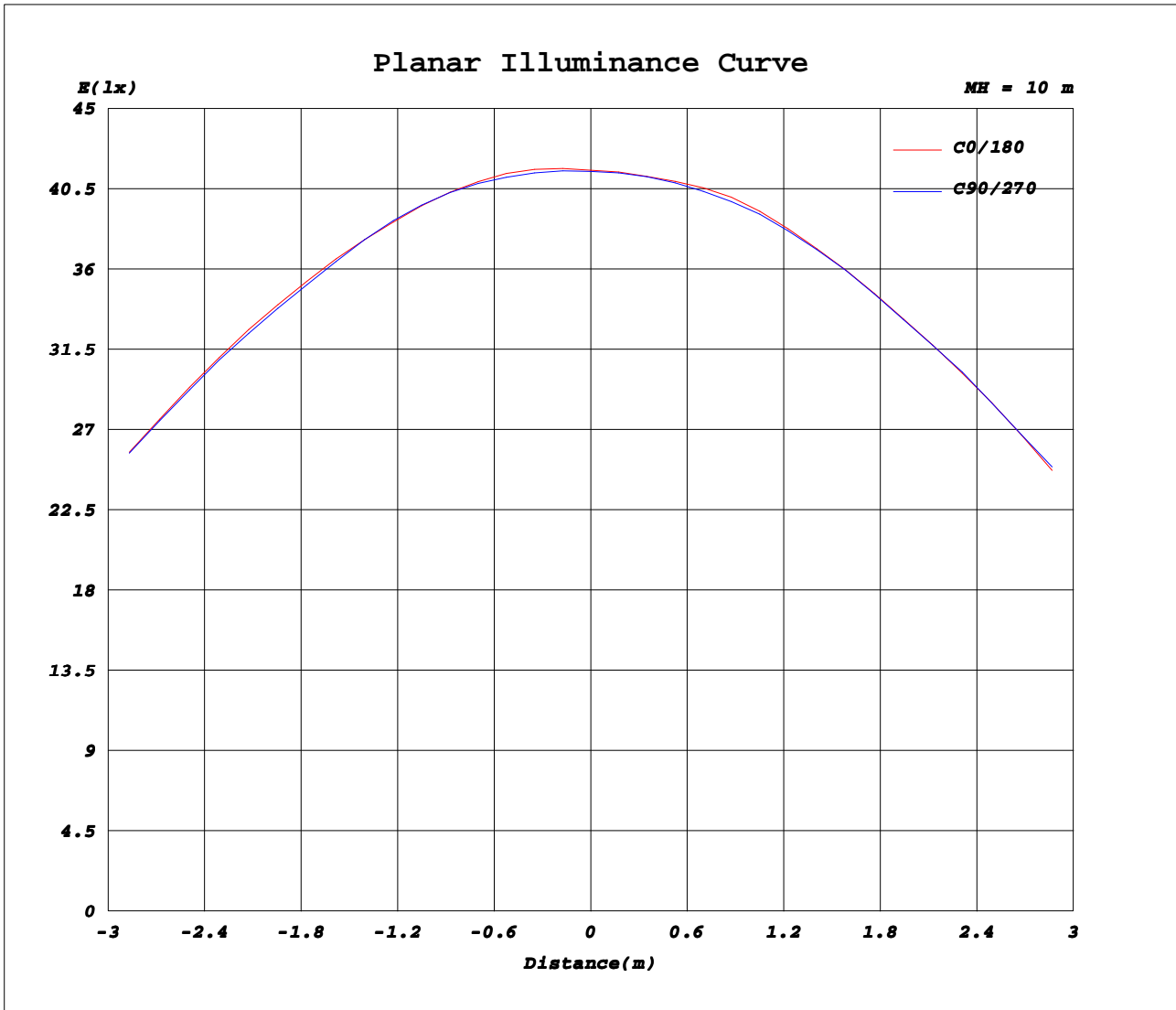
Test:U:221.70V I:0.0970A P:20.000W PF:0.9280 Freq:50.00Hz		
Lamp Flux:2171x1 lm		
Name: NS98-φ95mm-20W	Type: LED	
MFR.: Lumega Group	DIM.: D95*199mm	
	SUR.: D67mm	



C Range: 0 - 360DEG
C Interval: 30.0DEG
Test Speed: HIGH
Temperature: 25.3DEG
Operators: DAMIN
Test Date: 2022-05-04

γ Range: 0 - 180DEG
γ Interval: 1.0DEG
Test System: EVERFINE GO-2000A_V1 SYSTEM V2.00.443
Humidity: 65.0%
Test Distance: 8.000m [K=0.7063]
Remarks:

Planar Illuminance Curve



C Range: 0 - 360DEG
C Interval: 30.0DEG
Test Speed: HIGH
Temperature: 25.3DEG
Operators: DAMIN
Test Date: 2022-05-04

γ Range: 0 - 180DEG
γ Interval: 1.0DEG
Test System: EVERFINE GO-2000A_V1 SYSTEM V2.00.443
Humidity: 65.0%
Test Distance: 8.000m [K=0.7063]
Remarks:

LUMINOUS DISTRIBUTION INTENSITY DATA

Test:U:221.70V I:0.0970A P:20.000W PF:0.9280 Freq:50.00Hz		
Lamp Flux:2171x1 lm		
Name: NS98-φ95mm-20W	Type: LED	
MFR.: Lumega Group	DIM.: D95*199mm	
	SUR.: D67mm	

Table--1

UNIT: cd

C(DEG) γ (DEG)	0	30	60	90	120	150	180	210	240	270	300	330							
0	4155	4151	4149	4148	4150	4153	4155	4153	4150	4148	4149	4151							
5	4078	4080	4080	4076	4069	4059	4049	4037	4028	4024	4033	4051							
10	3698	3695	3688	3678	3660	3641	3625	3618	3617	3623	3639	3664							
15	3061	3068	3065	3053	3023	2990	2960	2951	2951	2963	2985	3018							
20	2131	2135	2131	2120	2096	2069	2046	2039	2039	2049	2068	2095							
25	1267	1251	1239	1233	1236	1241	1246	1242	1238	1236	1242	1252							
30	885	815	772	758	790	837	884	895	897	894	893	890							
35	591	369	218	139	162	234	334	422	505	574	605	610							
40	198	138	94.1	65.1	53.5	56.0	71.0	105	143	178	194	201							
45	42.8	35.1	30.7	29.4	33.1	38.7	44.8	49.1	52.2	53.6	52.2	48.6							
50	23.2	18.3	15.0	13.2	13.6	15.1	17.6	20.9	24.2	26.6	26.9	25.8							
55	15.2	11.6	9.15	7.85	7.97	9.01	10.8	13.5	16.2	18.3	18.5	17.4							
60	9.52	6.90	5.12	4.19	4.30	5.11	6.47	8.67	10.8	12.4	12.4	11.5							
65	5.49	3.78	2.64	2.07	2.22	2.84	3.82	5.35	6.82	7.89	7.81	7.01							
70	2.75	1.63	0.97	0.75	1.19	1.93	2.83	3.77	4.56	5.02	4.76	4.00							
75	1.41	0.67	0.29	0.25	0.74	1.45	2.25	2.96	3.50	3.74	3.39	2.61							
80	0.67	0.26	0.14	0.32	1.02	1.85	2.67	3.18	3.45	3.40	2.88	1.97							
85	0.54	0.22	0.20	0.48	1.32	2.26	3.12	3.45	3.49	3.23	2.65	1.75							
90	0.68	0.36	0.37	0.70	1.66	2.71	3.65	3.95	3.92	3.57	2.92	1.96							
95	0.87	0.57	0.61	0.98	2.00	3.12	4.11	4.40	4.34	3.95	3.24	2.22							
100	1.26	0.99	1.05	1.44	2.46	3.58	4.56	4.84	4.77	4.36	3.65	2.62							
105	1.91	1.68	1.76	2.16	3.19	4.30	5.27	5.51	5.39	4.95	4.24	3.23							
110	2.78	2.58	2.70	3.12	4.17	5.28	6.24	6.44	6.29	5.81	5.09	4.08							
115	3.89	3.71	3.83	4.25	5.29	6.40	7.34	7.50	7.31	6.81	6.10	5.13							
120	5.35	5.19	5.32	5.73	6.73	7.80	8.69	8.80	8.57	8.05	7.38	6.48							
125	7.23	7.16	7.33	7.74	8.67	9.63	10.4	10.5	10.2	9.68	9.05	8.24							
130	9.59	9.59	9.79	10.2	11.0	11.9	12.6	12.5	12.2	11.7	11.1	10.4							
135	12.3	12.4	12.6	13.0	13.7	14.5	15.1	15.0	14.6	14.1	13.6	13.0							
140	15.3	15.4	15.6	15.9	16.6	17.3	17.8	17.7	17.4	16.9	16.4	15.9							
145	18.4	18.4	18.6	18.9	19.5	20.1	20.5	20.4	20.1	19.7	19.3	18.9							
150	21.2	21.3	21.5	21.8	22.3	22.7	23.1	23.0	22.7	22.4	22.0	21.6							
155	23.1	23.4	23.7	24.0	24.4	24.7	25.0	24.9	24.8	24.4	24.1	23.7							
160	23.5	23.8	24.2	24.5	24.8	25.0	25.2	25.3	25.3	25.1	24.7	24.2							
165	22.3	22.8	23.2	23.5	23.8	23.9	24.0	24.0	23.8	23.5	23.2	22.8							
170	21.4	21.6	21.9	22.2	22.6	22.8	23.0	22.7	22.2	21.7	21.5	21.4							
175	20.7	20.6	20.6	20.7	20.9	21.2	21.3	21.1	20.8	20.5	20.5	20.5							
180	20.8	20.6	20.4	20.4	20.5	20.7	20.9	20.7	20.5	20.3	20.4	20.5							

C Range: 0 - 360DEG
C Interval: 30.0DEG
Test Speed: HIGH
Temperature:25.3DEG
Operators:DAMIN
Test Date:2022-05-04

γ Range: 0 - 180DEG
γ Interval: 1.0DEG
Test System:EVERFINE GO-2000A_V1 SYSTEM V2.00.443
Humidity:65.0%
Test Distance:8.000m [K=0.7063]
Remarks: